

## **Kermode Reports First Assays from VIGH GRAPHITE**

Victoria, British Columbia - (December 8, 2023) - Kermode Resources Ltd. (TSXV: KLM) ("Kermode" or the "Company") reports the first assays for select surface samples from the VIGH GRAPHITE project. Following the discovery of visible graphite mineralization, further field sampling was recently carried out and Kermode is waiting for additional results.

The sample results are listed in the table below.

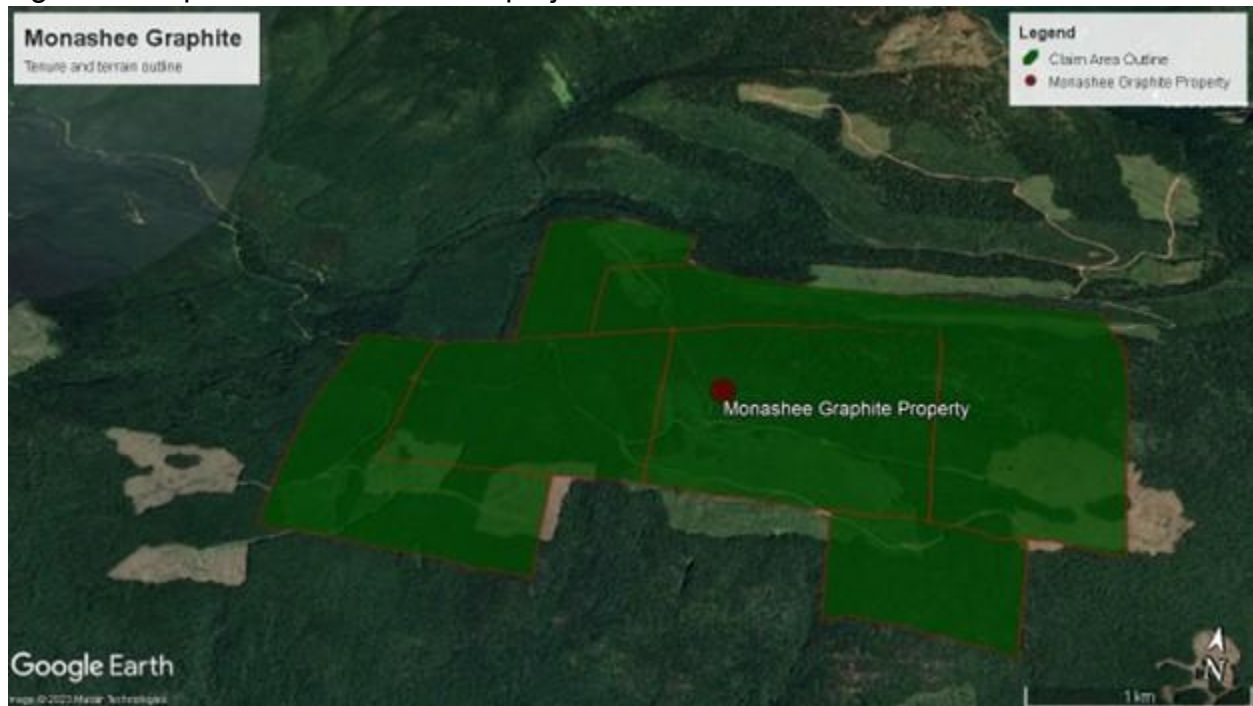
Sample ID	Sample type	Sulphur (% S)	Iron (% Fe)	Graphitic Carbon (% Gr)
23-20-01	Area grab, Crushed and Screened	1.1	6.3	<b>3.6</b>
23-20-02	Choice grab, calcite-rich material	0.0	1.3	<b>9.6</b>
23-20-03	Choice grab, visible graphitic material	0.0	1.7	<b>13.6</b>

Kermode CEO Peter Bell comments, *"I am grateful for the opportunity to report the results from this new exploration area we are calling Deep Blue Sky. The field picture of sample #23-20-03 provided in this news shows nodules of graphite in a complex matrix of grey-white calcite. What size are the graphite nodules and what is the total carbon grade associated with rocks like sample #23-20-03? What is the flake size distribution of similar material in the area, and will it be amenable to spheroidization?"*

Figure 1: Field Photograph of Graphitic Carbon (Gr) in Sample 23-20-03



Figure 2: Map of VIGH GRAPHITE project



### **Qualified Person**

The technical information in this news release has been reviewed and approved by Mr. Robert Carrington, Professional Geologist and Professional Engineering Geologist, a Qualified Person as defined in Canadian NI 43-101 responsible for the scientific and technical information contained herein under National Instrument 43-101 standards.

### **QA/QC Statement**

The samples were sent to ALS labs in Vancouver for graphitic carbon analysis via IR Spectroscopy (C-IR18) and multi-element ICP-MS+RRE (ME-MS61r). We do not have results for Total Carbon ("C(TOTAL)") at this time to compare with the graphitic carbon results.

The most recent work conducted on the subject property by the Company utilized commercial laboratories for all geochemical analyses and was conducted using industry-standard chain of custody procedures with all samples. Due to the preliminary nature of the field geochemistry programs, no blind analytical blanks and standards were utilized by the Company; and only the internal procedures employed by the commercial laboratories were utilized for QA/QC protocols. The Qualified Person is satisfied that these procedures and protocols are sufficient for the current status of the subject property.

**About Kermode**

Kermode is a junior mining company hunting for exploration opportunities around the world.

On Behalf of the Board of Directors,  
KERMODE RESOURCES LTD

"Peter Bell"  
President/CEO

For further information please contact:

Tel: 1-250-588-6939  
Email: peterbellmining@gmail.com  
Website: <https://linktr.ee/kermodesources>

*Neither the TSX Venture Exchange nor its Regulation Services Provider accepts responsibility for the adequacy or accuracy of this release.*

**Forward-Looking Statements**

This news release contains statements that constitute "forward-looking statements" within the meaning of applicable Canadian and United States securities legislation. Such forward-looking statements involve risks that may cause Kermode actual results to differ materially from anticipated results. Forward-looking statements in this document include results, analyses and interpretations of our exploration programs, geological and mineralization interpretations and the plans, results, costs, and timing thereof. Although Kermode believes the forward-looking information contained in this news release is reasonable based forward-looking statements involve uncertainty. The forward-looking information contained in this news release represents the expectations of the Company as of the date of this news release and, accordingly, is subject to change after such date.