

Kermode Reports Assays from VIGH GRAPHITE

Victoria, British Columbia - (January 15, 2024) - Kermode Resources Ltd. (TSXV: KLM) ("Kermode" or the "Company") reports results from surface sampling at the VIGH GRAPHITE project. Kermode plans to do additional testing on this project.

Two samples included significant results with 21.2% Graphitic Carbon (% Gr) in sample 24-09 and 13.2% Gr in sample 24-05. The results for all nine samples are provided in the table below, including Graphitic Carbon, Total Carbon C(TOTAL), and more.

Figure 1: Photograph of Graphitic Carbon (Gr) in Sample 24-09



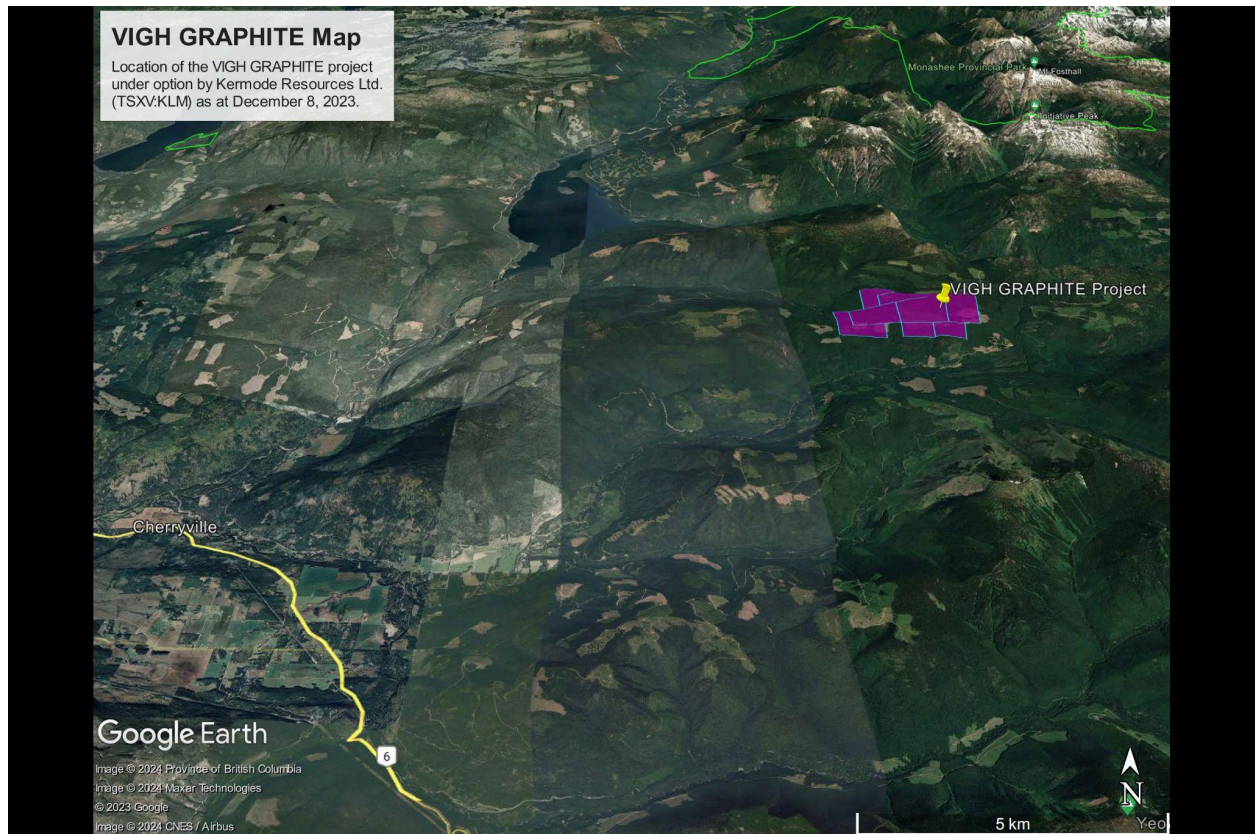
Figure 2: Field Photograph of location of Sample 24-09



ID	<u>Target Area</u>	<u>Sample Description</u>	<u>Sample Weight (KG)</u>	<u>Sulphur (% S)</u>	<u>Iron (% Fe)</u>	<u>Total Carbon C(TOTAL)</u>	<u>Graphitic Carbon (% Gr)</u>
24-01	RUTH	Composite grab sample from area with hematite-stained graphitic sediments	0.6	0.9	3.2	0.7	0.5
24-02	RUTH	Composite grab sample from area with hematite-stained graphitic sediments	0.9	1.1	3.1	0.5	0.4
24-03	DEEP BLUE SKY	Composite grab sample from area with hematite-stained graphitic sediments	1.1	1.3	3.2	0.5	0.5
24-04	DEEP BLUE SKY	Select grab of quartz with trace sulphides.	0.9	0.0	0.9	0.0	0.0
24-05	DEEP BLUE SKY	Select grab sample of graphite-rich metasediments crosscut by quartz veins.	0.8	7.0	2.9	13.2	13.1
24-06	DEEP BLUE SKY	Select grab of quartz with trace sulphides.	0.7	0.4	1.0	2.2	2.0
24-07	DEEP BLUE SKY	Select grab of quartz with trace sulphides.	1.1	0.0	1.8	0.4	0.3
24-08	RUTH	Composite grab sample from area with hematite-stained graphitic sediments	0.6	0.4	4.2	1.7	1.5
24-09	DEEP BLUE SKY	Select grab sample of graphite-rich sediments.	0.5	0.1	3.4	21.2	21.3

A map of the project area is provided below and at this link:

<https://www.google.com/maps/d/viewer?mid=1KHgkJk6-1tFE7ZGYPIWIUbbbvQYxSXfM&ll=50.32545750060252%2C-118.37628954262097&z=14>



Qualified Person

The technical information in this news release has been reviewed and approved by Mr. Robert Carrington, Professional Geologist and Professional Engineering Geologist, a Qualified Person as defined in Canadian NI 43-101 responsible for the scientific and technical information contained herein under National Instrument 43-101 standards.

QA/QC Statement

The samples were sent to ALS labs in Vancouver for graphitic carbon analysis via IR Spectroscopy (C-IR18), Total Carbon via IR Spectroscopy (C-IR07), multi-element ICP-MS+RRE (ME-MS61r), and Pt, Pd and Au 50g FA ICP-MS (PGM-MS24).

The most recent work conducted on the subject property by the Company utilized commercial laboratories for all geochemical analyses and was conducted using industry-standard chain of custody procedures with all samples. Due to the preliminary nature of the field geochemistry programs, no blind analytical blanks and standards were utilized by the Company; and only the internal procedures employed by the commercial laboratories were utilized for QA/QC protocols. The Qualified Person is satisfied that these procedures and protocols are sufficient for the current status of the subject property.

About Kermode

Kermode is a junior mining company hunting for exploration opportunities around the world.

On Behalf of the Board of Directors,
KERMODE RESOURCES LTD

"Peter Bell"
President/CEO

For further information please contact:

Tel: 1-250-588-6939

Email: peterbellmining@gmail.com

Website: <https://linktr.ee/kermoderesources>

Neither the TSX Venture Exchange nor its Regulation Services Provider accepts responsibility for the adequacy or accuracy of this release.

Forward-Looking Statements

This news release contains statements that constitute "forward-looking statements" within the meaning of applicable Canadian and United States securities legislation.

Such forward-looking statements involve risks that may cause Kermode actual results to differ materially from anticipated results. Forward-looking statements in this document include results, analyses and interpretations of our exploration programs, geological and mineralization interpretations and the plans, results, costs, and timing thereof. Although Kermode believes the forward-looking information contained in this news release is reasonable based forward-looking statements involve uncertainty. The forward-looking information contained in this news release represents the expectations of the Company as of the date of this news release and, accordingly, is subject to change after such date.