

**NI 43-101 TECHNICAL REPORT
on the Harrison Gold Project**

Location

121° 44' 48" W Longitude

and

49° 20' 05" N Latitude

Prepared for

Trans Canada Gold Corp.

Prepared By

Andrew Randell, P. GEO.

Grant Carlson, P.Eng

Effective Date:

February 25, 2026,

1.0	SUMMARY	5
	Conceptual Development Options	8
	Conclusions and Recommendations	9
2.0	INTRODUCTION	12
	UNITS AND MEASUREMENT	13
3.0	RELIANCE ON OTHER EXPERTS	14
4.0	PROPERTY DESCRIPTION AND LOCATION	14
	4.1 Mineral Rights	19
	4.2 Surface Rights	19
	4.3 Permit Requirements	19
	4.4 Existing Permits	20
5.0	ACCESSIBILITY, CLIMATE, LOCAL RESOURCES, INFRASTRUCTURE AND PHYSIOGRAPHY	21
6.0	HISTORY	21
	6.1 Previous Exploration Work	21
	6.2 Summary of BMGM Drilling and Recent Rock Sample Preparation	28
	6.3 Summary of Drillhole Database	29
	6.4 Norman’s 1989 Resource Estimate for Bema	29
7.0	GEOLOGICAL SETTING AND MINERALIZATION	32
	7.1 Regional Geology	32
	7.2 Property Geology	33
	7.3 Recent Geological Mapping	34
	Structural Observations	34
	Intrusions within the Harrison Gold Property	34
	7.4 Mineralization	36
	7.5 Exploration Model	36
8.0	DEPOSIT TYPES	39
	8.1 Deposit Styles of Harrison Lake	39
	8.2 Past Deposit Models of the Harrison Gold Project	39
	8.3 Current discussion on the Deposit Model of the Harrison Gold Project	40
9.0	EXPLORATION	41
	9.1 Exploration Work Carried Out by BMGM (the “VENDOR”)	41
	9.2 Comparison Between Standard Fire Assay and Metallic Gold Assay	47

10.0	DRILLING.....	49
10.1	BMGM (“Vendor”) Drilling.....	49
Table 10.2:	2021 BMGM Drill Hole Gold Assays.....	51
11.0	SAMPLE PREPARATION, ANALYSES, AND SECURITY.....	52
11.2	Multi Element ICP Analysis (ALS Global).....	52
11.3	Metallic Gold Assay (ALS Global)	52
12.0	DATA VERIFICATION.....	53
12.1	QP Verification Sampling	53
13.0	MINERAL PROCESSING AND METALLURGICAL TESTING.....	54
13.1	Historical Metallurgical testing.....	54
13.2	Gravity (2016), Steinert (2022), and TOMRA Laser Sorting Test work Completed in 2023.....	54
14.0	MINERAL RESOURCE ESTIMATE.....	55
15.0 THROUGH 22.0	ARE NOT APPLICABLE TO THIS REPORT	55
23.0	ADJACENT PROPERTIES.....	55
24.0	OTHER RELEVANT DATA AND INFORMATION.....	55
25	INTERPRETATION AND CONCLUSIONS.....	56
26	RECOMMENDATIONS	57
27	REFERENCES.....	59
28	CERTIFICATES OF AUTHORS	66
29	SIGNATURE PAGE.....	68
30	ANALYTICAL CERTIFICATES.....	70

LIST OF FIGURES

Figure 1:	Area Map Showing Outline of Mineral Property and Local Communities	10
Figure 2:	Google Earth View Showing Local Communities and the Bear Mountain Gold Belt (Note: Perspective View Not To Scale)	11
Figure 3:	Google Terrain View Showing The Bear Mountain Gold Belt, Known Diorite Intrusions and Gold in Soil Anomalies (Note: Perspective View Not To Scale).....	11
Figure 4a:	Tenure Map.....	16
Figure 4b:	Map Showing Mining Area and Exploration Area.....	17
Figure 4c:	Map Showing Mining Area.....	18
Figure 6a:	Jenner and Portal Zone Drill Holes.....	23

Figure 6b: Hill Stock Drill Holes	24
Figure 7a: Property Geology	33
Figure 7b: Geology Showing Known Diorite Intrusions and Mineralized Zones	35
Figure 7c Schematic 3D image showing the geometry of the Jenner and Portal Intrusions based on historic drill hole geology and assay information (Not to scale).....	37
Figure 9a: Soil Sampling	43
Figure 9b: Soil Geochemistry & Sample Locations.....	45
Figure 9c: North Half Geochemistry Showing Known Mineralized Zones	46
Figure 10: 2021 Drill Holes Plan Map.....	50

LIST OF TABLES

Table 1.1: Historical Resource Estimate Prepared by Price (2010)	7
Table 2.1: Definitions, Abbreviations, and Conversions.....	13
Table 4.1: Omineca Mineral Claims	14
Table 4.2 Bear Mountain Claims	15
Table 4.3: Historic Mining Area Corner Coordinates	25
Table 6.1: Historic Drilling	30
Table 6.2: Historical Tonnage and Grade Estimate for the Jenner Zone	31
Table 6.3: Historical Resources Estimate for Portal Zone	31
Table 6.4: Combined Historical Resources Estimates	44
Table 9.1: List of BMGM Exploration Expenditures from November 2011 to March 2024.....	44
Table 9.2: Table Showing 2021 Drill Core – reference ARIS Report No.40021	47
Table 9.3: MetSolve Gravity Recoverable Gold Study reference ARIS Report No. 36010.....	48
Table 9.4: ABH Engineering – Preliminary Laser Sorting Test Work reference ARIS Report No.43030	48
Table 9.5: Steinert Ore Sorting Test Work reference ARIS Report No.40021.....	48
Table 10.1: List of Drill Holes Completed by BMGM in 2021.	49
Table 10.2: 2021 BMGM Drill Hole Gold Assays	51
Table 12.1: The Verification Sample Collected by Randell	53

1.0 SUMMARY

This technical report was prepared at the request of Trans Canada Gold Corp (“TTG”). The Harrison Gold Property (the “Property”) is an exploration project focused on a seven-kilometer-long ridge called Bear Mountain located on the southeast side of Harrison Lake 130 kilometers east of Vancouver. A gold bearing quartz vein was discovered near the northern end of the ridge by local prospectors during the 1970’s and small-scale mining operations (called the RN Mine) were carried out until the early 1980’s. Extensive drilling and several hundred meters of underground development work completed by previous owners between 1983 and 1990 identified multiple mineralized zones in the northern part of Bear Mountain but little follow up work was completed until the mid 2000’ due to low gold prices. More recent work completed since 2011 by Bear Mountain Gold Mines (“BMGM”) has demonstrated significant potential for additional discoveries and identified low impact development options that would minimize potential impacts from any future mining operations on nearby communities. Pursuant to an Option and Joint Venture Agreement dated February 1, 2026 between BMGM and TTG, TTG can earn up to a 60% interest in the Property. The details of this agreement are described in Section 2.0

Exploration activities related to the Jenner and Portal Zone (referred to as the “Mining Area”) can be carried out using the existing road network and underground workings on the west side of Bear Mountain. Exploration activities related to the Hill Zone and evaluating the soil geochemical anomalies that have been identified along the prospective structural corridor (referred to as the Exploration Area) can utilize an existing network of old logging trails on the west side of Bear Mountain for ATV access but will require some helicopter support for drill moves.

The Property consists of 5,132.71 hectares (“ha”) of mineral tenures (primarily located within the District of Kent Municipality), which cover most of Bear Mountain and parts of Hicks Mountain to the east. The tenures are bounded to the north by Sasquatch Park (with the exception of 462.9 ha located on the north side of the park), to the west by Harrison Lake, to the south west by the community of Harrison Hot Springs, to the south by the community of Agassiz, to the south east by the Seabird Island Community and to the east by Highway No.7. The community of Ste Sailles is located on the southwest side of Harrison Lake approximately 5 kilometers west of Harrison Hot Springs. Figure 1 shows the location of the mineral tenures and the surrounding communities. Figure 2 is a 3D Google Earth view of the project looking southeast from Harrison Lake towards the Fraser River.

In 2000, the historic claims lapsed and Eagle Plains Resources staked the mineral claims covering the northern part of Bear Mountain and subsequently transferred them to Omineca Mining and Metals Ltd. (“Omineca”) in 2006 as part of a corporate restructuring. In 2010, Omineca retained Barry Price, PGeo., to compile all available historic technical data for the Property in a 43-101 compliant technical report (SEDAR Profile Number 000023891). Based on his review Price concluded that the Property has merit and is “comparable in origin with the intrusive-related deposits identified within the Tintina Gold Belt of the Yukon and Alaska”.

In his technical report, Price reported that previous owners of the claims covering Bear Mountain spent approximately seven million dollars between 1980 and 1993 exploring the northern part of Bear Mountain. Most of the previous exploration work was completed by Abo Oil Corp., Kerr Adisson Mines (“Kerr Adisson”) and Bema International Gold Corp. (“Bema”) and consisted of soil sampling, core drilling (approximately 19,000 meters in 161 holes) (Note: current drill hole database indicates a total of 23,680 meters of drilling) and several hundred meters of underground development work. In 2002 Northern Continental Resources optioned the claims from Eagle Plains and spent an additional \$500,000 on drilling primarily within the Hill Zone area but was unable to meet the earn-in requirements and returned the claims to Eagle Plains in 2006.

Soil sampling programs carried out in the early 1980’s identified elevated concentrations of gold in the soils surrounding the former RN mine area and in several additional locations up to 2

kilometers further south. Follow up core drilling of some of these geochemical anomalies identified mineralization (including the Jenner Zone, the Portal Zone and the Hill Zone) which consists of sub horizontal, gold bearing quartz veins that form weak stockwork type zones within sub-vertical, finger like diorite intrusions (100 to 350 meters in diameter). Price, 2010 also noted that several other styles of mineralization were encountered but lacked significant continuity.

The Jenner and Portal Zones outcrop at an elevation of approximately 235 meters and the surface outcrop of the Hill Zone is at an elevation of approximately 600 meters. Considering that the deepest known intercept of stockwork type mineralization within the Jenner Zone reportedly occurs at an elevation of 70 meters below sea level, the known vertical range of this style mineralization is approximately 700 meters. As an example of the mineralization encountered, a drill hole completed in 1985 to test the Jenner Zone (DDH 85-36) reportedly intersected a 102-meter-wide interval of sub horizontal quartz veins that averaged 3.54 g/t. In 1987, Kerr Adisson and Bema funded a conceptual review of possible mining options for the Jenner Zone and concluded that underground mining may be technically feasible. They also acknowledged that constructing a large-scale conventional mining and processing operation adjacent to Harrison Lake would impact nearby residential properties and recreational use of Harrison Lake.

In 1989, Norman calculated a preliminary resource estimate for the upper parts of the Jenner and Portal Zones. This historical estimate was based on the drilling completed above the 50-meter ASL level. In 2002, Price reviewed Normans historical estimate and estimated that the Jenner and Portal Zones contain 2,458,674 tons at an average grade of 2.79 g/t or 220,300 ounces. It is important to note that a single deep hole, drilled in 1988 from the Jenner Zone underground workings (DDH 88-121), reportedly intersected 37 meters of mineralization averaging 3.2 g/t gold (including a 9.5-meter-wide interval that averaged 13.5 g/t gold) below the historical resource.

The historical resource estimate calculated by Norman in 1989 and reviewed by Price in 2002 and 2010 is relevant to the Harrison Gold Property because it confirms there is mineralization present. However, this estimate does not comply with current 43-101 requirements and does not use the resource categories as defined by CIM. The parameters Norman used to calculate the historical estimate are stated in section 6 of this report. The qualified persons preparing this report have not done sufficient work to classify the historical estimate as a current mineral resource. The Company is not treating the historical estimate as a current mineral resource.

Table 1.1: Historical Resource Estimate Prepared by Price (2010)

Category of Mineral Resource	Tonnes	Grade Au (gram/tonne)	Contained Gold (grams)	Contain Gold (ounces)
“PROBABLE RESOURCE”	(Original terminology)			
Jenner Zone	1,344,500	2.67	3,585,000	115,000
Portal Zone	500,574	3.12	1,562,600	50,200
TOTAL BOTH ZONES	1,845,074	2.79	5,147,600	165,200
“POSSIBLE RESOURCE”	(Original terminology)			
Jenner Zone	456,000	2.83	1,291,600	41,500
Portal Zone	157,000	2.69	421,700	13,600
TOTAL BOTH ZONES	613,000	2.79	1,713,300	55,100

This estimate does not use the resource categories as defined by CIM and the differences to the CIM categories are not known. The qualified person has not done sufficient work to classify the historical estimate as a current mineral resource. The Company is not treating the historical estimates as a current mineral resource.

The mineralized diorite stocks that have been identified on the Harrison Gold property are assumed to be genetically related to the 25 km² Hicks Lake Batholith (dated at 24.5 Ma). BC Government maps show that the western contact of the Hicks Lake Batholith is roughly parallel to the HLSZ and approximately one kilometer to the east. The segment of the HLSZ that extends through Bear Mountain is 7 kilometers long and up to 2 km wide. It has been confirmed in multiple historic technical reports that follow up drilling of “gold in soil anomalies” resulted in the discovery of several mineralized zones. The apparent structural controls on the emplacement of diorite intrusions within Bear Mountain appear to have created an NNW-SSE trending corridor of diorite and quartz diorite intrusions.

In 2006, Downie recognized that the diorite intrusions that have been identified on Bear Mountain appear to be bound to the east and west by large-scale NNW-SSE trending faulting associated with the 1-2 km-wide Harrison Lake Shear Zone (“HLSZ”). The HLSZ is a right lateral transcurrent shear zone inclined 50 to 70 degrees to the east and secondary, oblique, minor faulting trending NE-SW and SE-NW likely formed during dextral strike-slip deformation. Within Bear Mountain, the intersection of these structural elements may have created dilation zones that allowed emplacement of the diorite intrusions associated with the gold bearing quartz veins.

In summary, recognition that the emplacement of the diorite intrusions and the related mineralization is structurally controlled, combined with the presence of multiple, gold in soil anomalies that have not been drill tested suggests potential for the discovery of more mineralized intrusions. BMGM now refers to this corridor of intrusions as the Bear Mountain Gold Belt.

In 2011, BMGM’s parent company Sierra Madre Development Corp. (TSX:V SMG) (“Sierra”) reviewed the Price report and the historic exploration data and staked the southern part of Bear Mountain. During October of 2011 Sierra negotiated an option agreement with Omineca whereby Sierra acquired the right to earn a 100% interest to the claims covering the northern part of Bear Mountain subject to certain cash payments, share issuances, royalties and completing \$2,000,000 in exploration expenditures. As part of a corporation reorganization, in 2018 Sierra

spun out BMGM to shareholders as a private BC corporation. In a technical report submitted to the Ministry of Mines on November 10, 2025, Von Einsiedel confirmed that BMGM has met the expenditure requirements set out in the Omineca agreement and summarized the exploration work and technical studies that were completed by Sierra and BMGM up to the March 31, 2024 completion deadline.

Since the early 2000's, exploration companies operating in the Yukon have made significant progress defining the characteristics of gold deposits that are associated with these types of intrusions and have classified them as Intrusion Related Gold Systems (IRGS). Although the historic drilling results reported by previous exploration companies have not yet been verified by systematic drill testing it is possible that the known mineralized zones that have been identified on Bear Mountain represent isolated parts of an underexplored Intrusion Related Gold System. It is also interesting to note that the widespread occurrence of metallic gold grains reported in the historic drill logs and the results of limited metallic gold assays completed by BMGM on material collected from the existing underground workings and a drilling program completed in 2021 suggest that the conventional fire assay method utilized by previous operators may have under reported the actual average grade of the known mineralized zones. Although extensive sampling will be required to establish the actual grade of the known mineralized zones, the batches of metallic gold test work completed by BMGM consistently showed an average grade increase ranging from 40 to 50% higher than the conventional fire assay technique that was used for all of the historical rock and drill core assaying. Refer to Section 12: Data Verification. The recent introduction of Photon Assay equipment at several Canadian laboratories will significantly increase the accuracy of drill core and mine sample assay reporting.

As part of this project assessment the authors visited the project site and reviewed the technical reports that have been submitted to the Ministry of Mines since 2011 by Sierra and BMGM. These reports document soil geochemical surveys; underground sampling and rehabilitation work; access road and site infrastructure improvements on the west side of Bear Mountain; surface and underground geotechnical studies; an eight hole, 460 meter drill program completed in 2021 and several metallurgical and ore sorting tests (including comparative metallic gold assays) carried out on material collected from the existing underground workings; and a preliminary assessment of the feasibility of constructing road access from Highway 7 to the east side of Bear Mountain. The total expenditures reported in these assessment reports met the \$2,000,000 expenditure requirement specified in the agreement between Omineca and Sierra in 2011. In addition, the authors briefly reviewed the legal agreements between Sierra, Omineca and BMGM and note that Omineca acknowledged completion of the required expenditures in March of 2024.

Conceptual Development Options

Due to the proximity of the Property to several nearby communities BMGM undertook a preliminary evaluation of possible development options that would minimize potential environmental, traffic and visual impacts of any future mining operations within the Mining Area and for the Exploration Area.

In 2015, BMGM entered into an Industrial Road Use Agreement with the Ministry of Forests for the segments of the Bear Mountain Forest Service Road that access the Mining Area. This agreement ensures that BMGM will have ongoing road access to the existing underground workings and also ensures access to the network of overgrown logging trails on the west side of Bear Mountain that will be required for ongoing exploration work throughout the Exploration Area.

As part of their review, BMGM retained McElhanney Engineering to complete an initial assessment of potential road access options that could be constructed from the No.7 Highway to the east side of Bear Mountain. According to McElhanney, the best option would involve construction of a controlled, 4.5 kilometer long, industrial road originating from an undeveloped area on Highway No.7 (located to the east of the Seabird Island Community approximately 8.5 kilometers northeast of Agassiz) to the Hydro transmission corridor on the east side of Bear

Mountain. If constructed, this road would traverse Crown Land along the southern and western sides of Hicks Mtn. (within the mineral tenures that comprise the Property) and connect with existing Hydro and Forest Service Roads along the east side of Bear Mountain. Construction of the road appears to be technically feasible and it was noted that this option would also provide access to a ridge on the south west side of Hicks Mtn. that could potentially be developed as an aggregate quarry, in ARIS Report 43030 by von Einsiedel, (2025).

In the event that ongoing exploration work identifies commercially viable gold deposits and road access to the Hydro transmission corridor on the east side of Bear Mountain can be established, it may be possible to access these deposits by constructing tunnels from the east side of Bear Mountain (reference JDS Mining review in ARIS Report No. 43030). To provide areas for mine infrastructure and tailings storage there are large, low relief areas adjacent to the existing hydro transmission corridor in the central part of Hicks Mountain which could be utilized without creating any visual impacts on local communities. Although extensive studies will be required to ensure there would be no negative environmental impacts the only traffic impacts of commercial scale mining operations would be low volumes of truck traffic entering Highway No.7 from an undeveloped area located east of the Seabird Island Community.

In regards to possible development options for the Jenner and Portal Zones in the Mining Area there is only a limited space available near the underground workings to construct conventional mining infrastructure and there are residential properties located within 200 meters. However, the preliminary results of the ore sorting test work carried out by BMGM are encouraging and indicate that it may be possible to utilize an underground ore sorting system to create a high-grade concentrate that could be shipped offsite for processing.

The existing roads would need to be upgraded to accommodate truck and equipment traffic and some additional private land may be acquired to accommodate the necessary infrastructure. However, a substantial amount of the waste rock could be used as backfill underground and the overall amount of truck traffic would be limited. To ensure public safety a decommissioned segment of the old forest service road that bypasses the 350-meter-long segment of the current FSR that would be utilized by equipment could be upgraded and used as an alternative access route for recreational users of the Bear Mountain Trail.

Conclusions and Recommendations

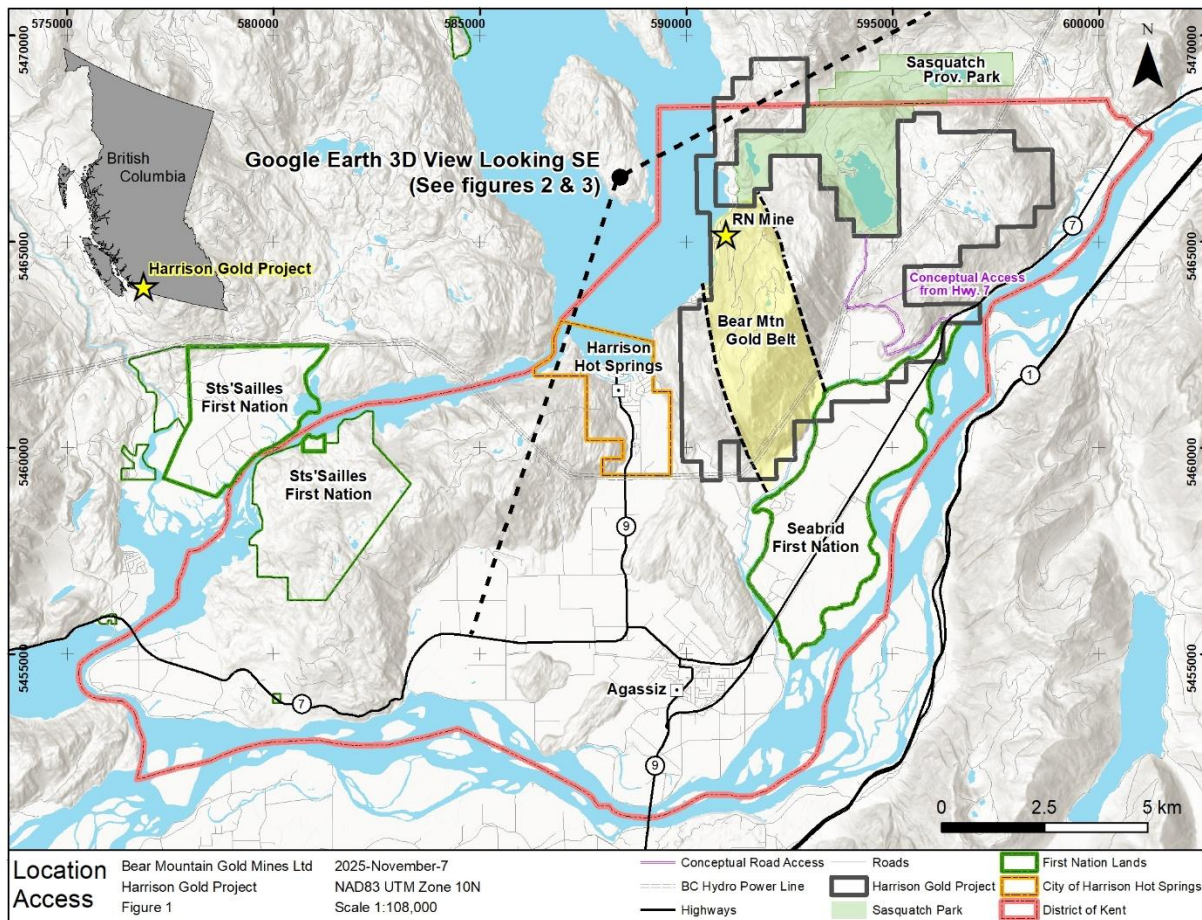
In summary, exploration work to date on Bear Mountain has identified significant historical gold mineralization associated with several diorite intrusions extending south from Sasquatch Park towards Agassiz. These historical discoveries were made by shallow drill testing (i.e. typically less than 200-meter drill holes) within areas which exhibit elevated gold concentrations in soils. Deeper drilling often intersected additional mineralized zones at depth. The best historical example to illustrate the possible vertical extent of mineralization associated within these intrusions is DDH UG88-121 (Jenner Zone) which intersected mineralization at an elevation of 70 meters below sea level. This mineralization is more than 300 meters below the surface outcrop of the Jenner Zone and is approximately 700 meters vertically below similar mineralization encountered within the Hill Stock located two kilometers to the south.

Based on the available data, a staged, \$1.50 million follow up exploration program designed to verify the historic drilling results; expand the known mineralized zones; and, identify additional mineralized zones along the prospective structural corridor within Bear Mountain is warranted. Exploration activities related to the Jenner and Portal Zone (referred to as the "Mining Area") can be carried out using the existing road network and underground workings on the west side of Bear Mountain. Exploration activities related to the Hill Zone and the rest of the Bear Mountain Gold Belt (referred to as the Exploration Area) can utilize an existing network of old logging trails on the west side of Bear Mountain for ATV access but will require helicopter support for drill moves. Drilling permits are in effect until September 23, 2027.

Although previous exploration efforts have been successful, the absence of a systematic exploration approach supports the possibility that known mineralized zones may only represent isolated parts of the intrusion related gold system located within Bear Mountain. In addition to the possibility of identifying new mineralized zones at depth below known mineralized zones, the available soil sampling data indicates potential for the discovery of multiple additional mineralized intrusions.

The depth extent of mineralization delineated by drilling below the Jenner Zone is consistent with the IRGS exploration model and demonstrates that mineralized intrusions within Bear Mountain have potential to host multiple sub-horizontal mineralized zones over a vertical range of at least several hundred meters. Continued exploration of this Property is clearly warranted and if commercially viable gold deposits are identified the access and development concepts suggested by BMGM provides a framework which would significantly reduce impacts on local communities.

Figure 1: Area Map Showing Outline of Mineral Property and Local Communities



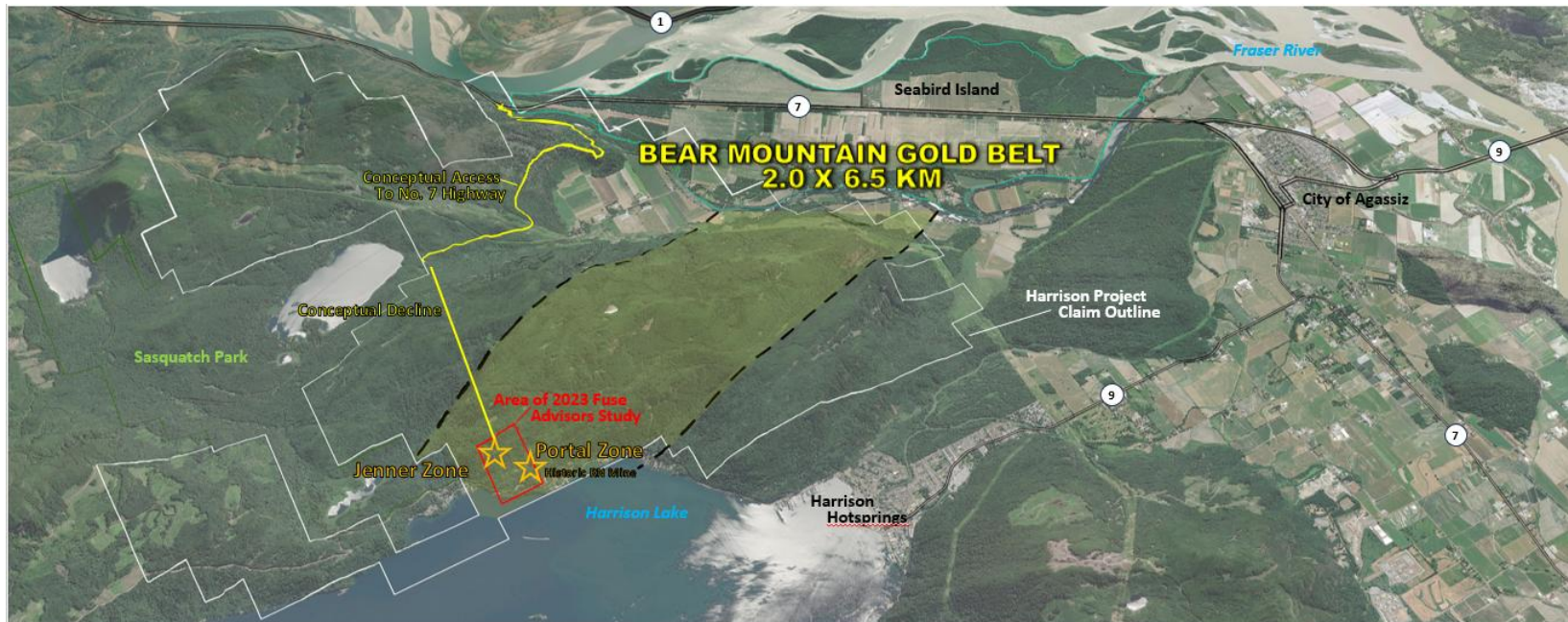


Figure 2: Google Earth 3D View Showing Local Communities and the Bear Mountain Gold Belt (Note: Perspective View Not To Scale)

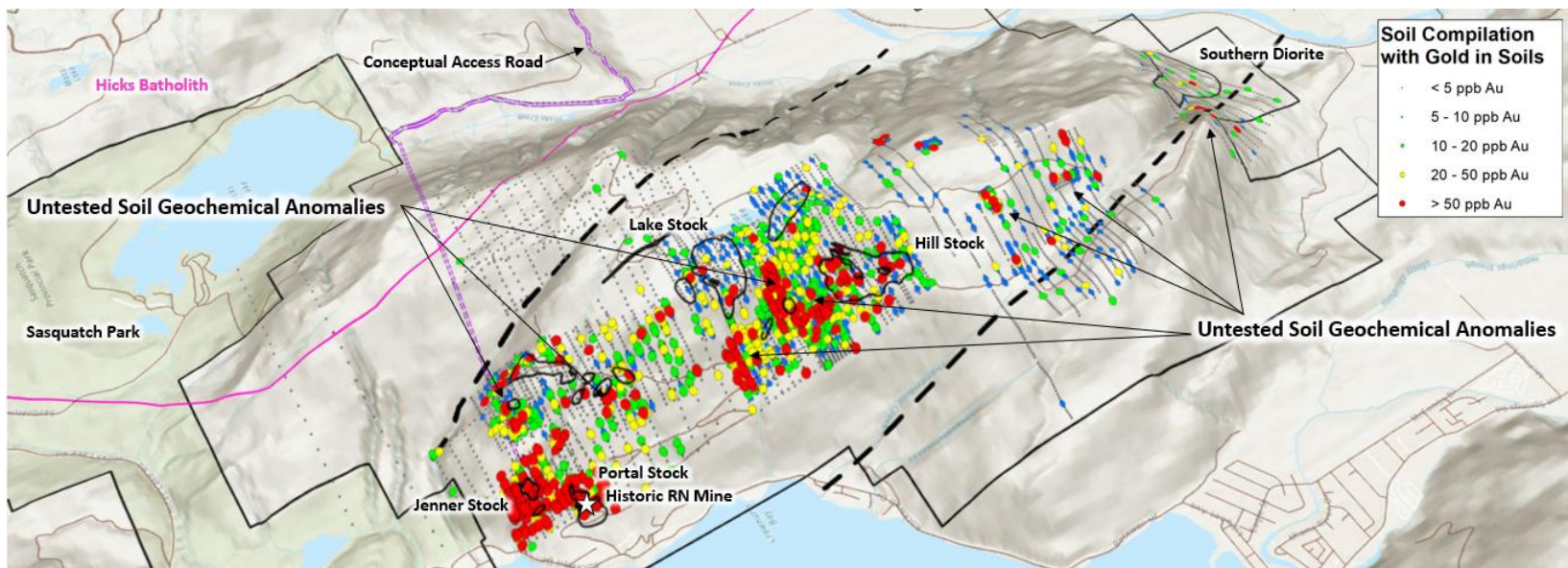


Figure 3: Google Terrain View Showing The Bear Mountain Gold Belt, Known Diorite Intrusions and Gold in Soil Anomalies (Note: Perspective View Not To Scale)

2.0 INTRODUCTION

Pursuant to an Option and Joint Venture Agreement dated February 1, 2026 between BMGM and TTG, TTG can earn up to a 60% interest in the Property. Pursuant to the Option and JV Agreement TTG must pay \$1,050,000 in cash, incur a total of \$5,000,000 in exploration expenditures and issue 10 million shares within 5 years. As part of this agreement the Property has been subdivided into two separate geographic areas referred to as the Mining Area (referred to in the agreement as the mine area comprising 125 ha. located within tenure number 382167) and the Exploration Area (comprising all of the other mineral tenures that comprise the Property). As a condition of the agreement a minimum of \$2,500,000 must be incurred within the 125-ha section of the Property referred to as Mining Area (refer to Figure 4b).

The entire Property is subject to a 2% NSR royalty payable to Omineca of which BMGM shall at any time on or before three years following commencement of commercial production from the Property have the right to purchase one-half of the NSR Royalty (1% NSR) for \$1,000,000 cash; and shall also have the right of first refusal to purchase the remaining 1% NSR. In addition, to the Omineca NSR described above, tenure number 235557 is subject to a 2% NSR in favor of Robert Pincombe which can be purchased at any time for \$2,000,000 cash.

This report was commissioned by Trans Canada Gold Corp. (or the “Company”) and prepared by Andrew Randell, P.Geo. and Grant Carlson, P.Eng. As an independent professional geologist, Randell was asked to undertake a review of the available exploration data, and recommend, if warranted, specific areas for further work on the Harrison Gold Project (or the “Property”). As an independent mining engineer Carlson was asked to undertake a review of the available historic and recent mining and engineering related technical reports that have been completed and recommend, if warranted, underground sampling programs and drilling programs.

In the preparation of this report, the authors utilized British Columbia geological maps, geological reports, claim maps, and data internal to Bear Mountain. Information was also obtained from British Columbia Government websites such as:

- Map Place - www.empr.gov.bc.ca/Mining/Geoscience/MapPlace;
- Mineral Titles Online - www.mtonline.gov.bc.ca/

The authors also utilized assessment work reports (ARIS reports) from the Harrison Gold Property area that have been historically filed with the Ministry of Mines by various previous companies.

Andy Randell, P,Geo, visited the Harrison Gold Property on July 17, 2023 during which time the author reviewed the geological setting. The maps in this report were created by BMGM and reviewed by the author.

Grant Carlson P.Eng., visited the Harrison Gold Property on July 6, 2023 during which time the author reviewed the available historic and recent mining and engineering related technical reports that have been completed the geological setting. The maps in this report were created by BMGM and reviewed by the author.

The authors were retained to complete this report in compliance with National Instrument 43-101 of the Canadian Securities Administrators (“NI 43-101”) and the guidelines in Form 43-101F1. The authors are both “Qualified Persons” within the meaning of NI 43-101. The authors are both independent from the Issuer and the Vendor as defined by item 1.5 of NI 43-101.

The authors confirm that no material work has been carried out on the Property since the recent site visit in 2023.

UNITS AND MEASUREMENT

Table 2.1: Definitions, Abbreviations, and Conversions

Units of Measure	Abbreviation	Units of Measure	Abbreviation
Above mean sea level	amsl	Micrometre (micron)	µm
Billion years ago	Ga	Milligram	Mg
Centimetre	cm	Milligrams per litre	mg/L
Cubic centimetre	cm ³	Millilitre	mL
Cubic metre	m ³	Millimetre	Mm
Days per week	d/wk	Million tonnes	Mt
Days per year (annum)	d/a	Minute (plane angle)	'
Degree	°	Month	Mo
Degrees Celsius	°C	Ounce	oz.
Degrees Fahrenheit	°F	Parts per billion	Ppb
Diameter	∅	Parts per million	Ppm
Gram	g	Percent	%
Grams per litre	g/L	Pound(s)	lb.
Grams per tonne	g/t	Power factor	pF
Greater than	>	Specific gravity	SG
Hectare (10,000 m ²)	ha	Square centimetre	cm ²
Gram	g	Square inch	in ²
Grams per litre	g/L	Square kilometre	km ²
Grams per tonne	g/t	Square metre	m ²
Greater than	>	Thousand tonnes	Kt
Kilo (thousand)	k	Tonne (1,000kg)	T
Kilogram	kg	Tonnes per day	t/d
Kilograms per cubic metre	kg/m ³	Tonnes per hour	t/h
Kilograms per hour	kg/h	Tonnes per year	t/a
Kilometre	km	Total dissolved solids	TDS
Less than	<	Week	Wk
Litre	L	Weight/weight	w/w
Litres per minute	L/m	Wet metric tonne	Wmt
Metre	m	Yard	yd.
Metres above sea level	masl	Year (annum)	A

3.0 RELIANCE ON OTHER EXPERTS

For the purpose of the report, the author has reviewed and relied on ownership information provided by Bear Mountain Gold Mines Ltd. A limited search of tenure data (December 31, 2025), A limited search of tenure data on the British Columbia government's Mineral Titles Online (MTO) web site confirms the data supplied. However, this does not constitute a legal opinion on the Bear Mountain Property, that is beyond the expertise of the Authors of this report.

4.0 PROPERTY DESCRIPTION AND LOCATION

The Harrison Gold Property consists of twenty-nine non-surveyed contiguous mineral claims totalling 5,132.71 hectares located on NTS maps 92G centered at 121° 44' 48" Longitude and 49° 20' 05" Latitude. Eleven mineral claims comprising 2,426.6 hectares are owned by Omineca. Eighteen of the mineral claims comprising 2706.11 hectares are owned by Bear Mountain Gold Mines Ltd with one claim under the ownership of Carl von Einsiedel. Figure 1 shows the location of the Property within the District of Kent and Table 4.1, Table 4.2 and Figure 4a describe and show the mineral claims that cover the Property.

Table 4.1: Omineca Mineral Claims

Omineca Option				
TENURE NUMBER	GOOD DATE	TO	CLAIM NAME	AREA (ha)
235557	31-Dec-31		AB	150.00
382167	31-Dec-31		ABO 1	500.00
382168	31-Dec-31		ABO 2	225.00
383387	31-Dec-31		AB	25.00
384241	31-Dec-31		ABO 3	150.00
384242	31-Dec-31		ABO 4	500.00
384243	31-Dec-31		ABO 5	300.00
384244	31-Dec-31		ABO 6	25.00
384245	31-Dec-31		ABO 7	25.00
529139	31-Dec-31		AB	505.54
529146	31-Dec-31		AB	21.06
TOTAL 11			TOTAL	2426.60

Table 4.2 Bear Mountain Claims

Bear Mountain Claims					
TENURE NUMBER	GOOD DATE	TO	CLAIM NAME	AREA (ha)	OWNER
834382	31-Dec-31			210.65	Bear Mountain Gold Mines
951229	31-Dec-31			84.19	Bear Mountain Gold Mines
951791	31-Dec-31			358.15	Bear Mountain Gold Mines
983427	31-Dec-31			21.07	Bear Mountain Gold Mines
993682	31-Dec-31			21.07	Bear Mountain Gold Mines
1012805	31-Dec-31			105.36	Bear Mountain Gold Mines
1013819	31-Dec-31			315.61	Bear Mountain Gold Mines
1013821	31-Dec-31			610.42	Bear Mountain Gold Mines
1016752	31-Dec-31			63.18	Bear Mountain Gold Mines
1016754	31-Dec-31			21.06	Bear Mountain Gold Mines
1017121	31-Dec-31			231.51	Bear Mountain Gold Mines
1017622	31-Dec-31			189.46	Bear Mountain Gold Mines
1018277	31-Dec-31			147.33	Bear Mountain Gold Mines
1035351	31-Dec-31			105.30	Bear Mountain Gold Mines
1019719	31-Dec-31			21.06	Bear Mountain Gold Mines
1047317	31-Dec-31			63.14	Bear Mountain Gold Mines
1027708	31-Dec-31			84.15	Bear Mountain Gold Mines
1097805	31-Dec-31			21.06	Von Einsiedel, Carl
TOTAL 18			TOTAL	2706.11	

Figure 4a: Tenure Map

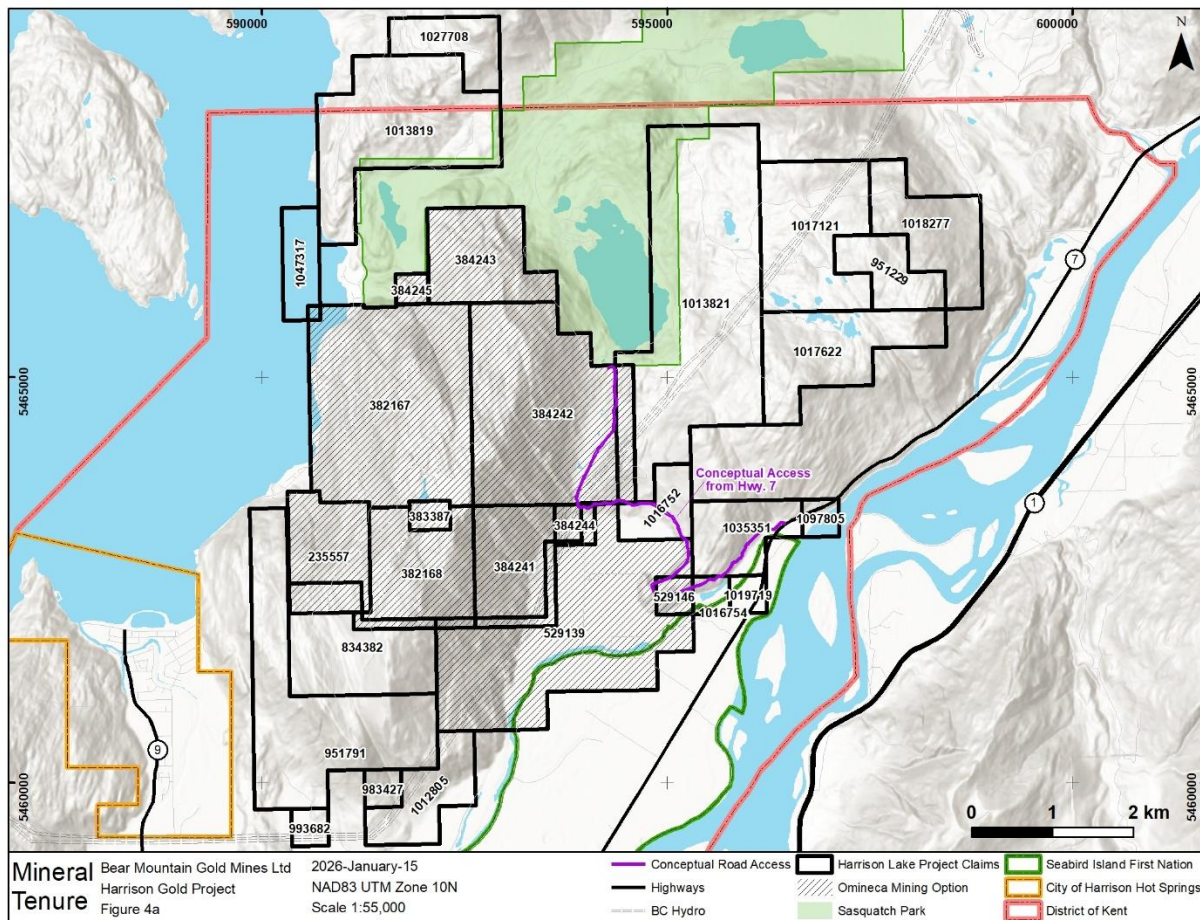
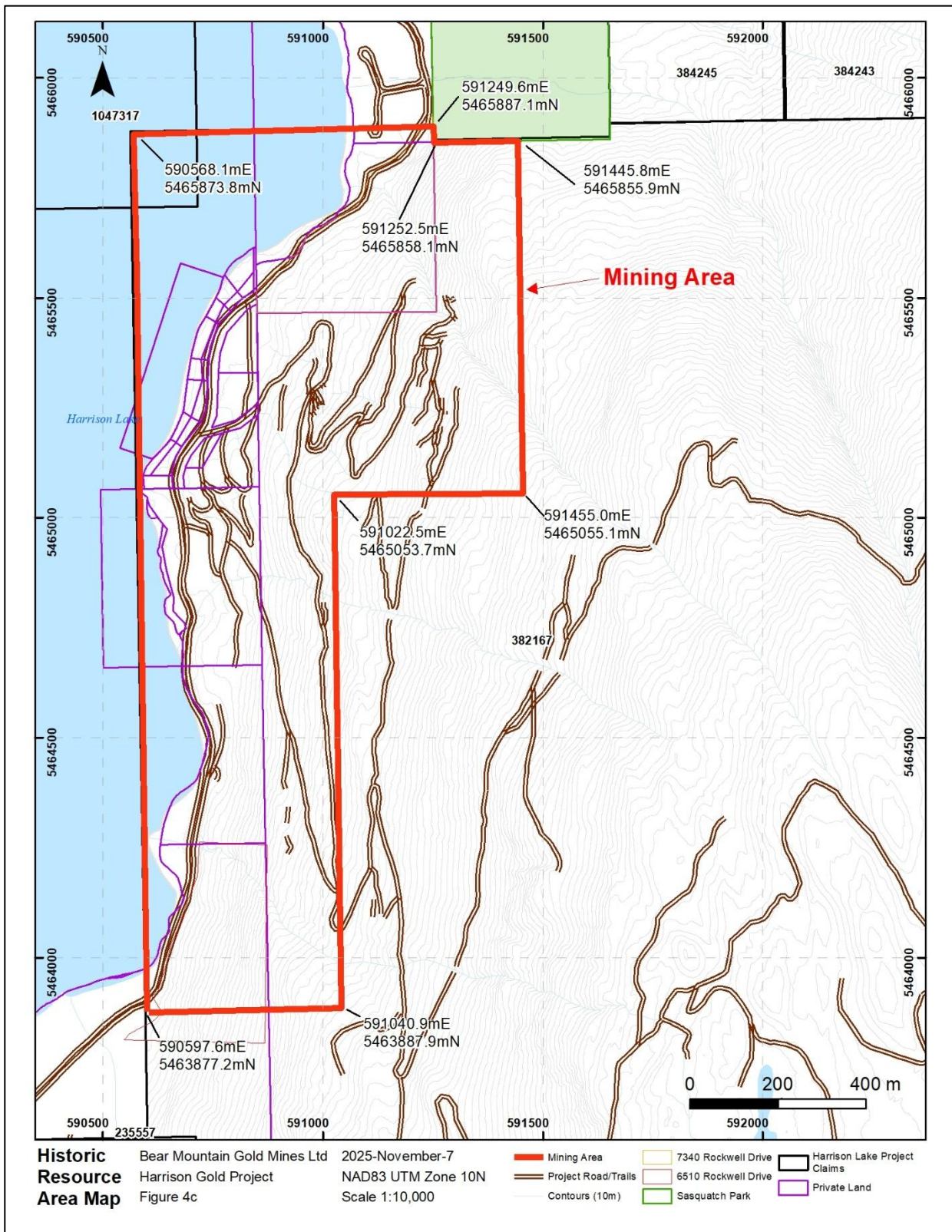


Figure 4a also show the boundaries of the District of Kent Municipality, the Municipality of Harrison Hot Springs, Sasquatch Park, and the Seabird Island First Nation.

In 2000, Eagle Plains Resources acquired the mineral claims covering the northern part of Bear Mountain and subsequently transferred them to Omineca Mining and Metals Ltd. (“Omineca”) in 2006 as part of a corporate restructuring. In 2011, BMGM’s parent company Sierra Madre Development Corp. (TSX:V SMG) (“Sierra”) reviewed the Price report and the historic exploration data and staked the southern part of Bear Mountain. During October of 2011 Sierra negotiated an option agreement with Omineca whereby Sierra acquired the right to earn a 100% interest to the claims covering the northern part of Bear Mountain subject to certain cash payments, share issuances, royalties and completing \$2,000,000 in exploration expenditures. In 2018 Sierra spun out BMGM to shareholders as a private BC corporation. In a technical report submitted to the Ministry of Mines on November 10, 2025, Von Einsiedel confirmed that BMGM has met the expenditure requirements set out in the Omineca agreement and summarized the exploration work and technical studies that were completed by Sierra and BMGM up to the March 31, 2024 completion deadline.

The entire Property is subject to a 2% NSR royalty payable to Omineca of which BMGM shall at any time on or before three years following commencement of commercial production from the Property have the right to purchase one-half of the NSR Royalty (1% NSR) for \$1,000,000 cash; and shall also have the right of first refusal to purchase the remaining 1% NSR. In addition, to the Omineca NSR described above, tenure number 235557 is subject to a 2% NSR in favor of Robert Pincombe which could be purchased at any time for \$2,000,000 cash.

Figure 4c: Map Showing Mining Area



4.1 Mineral Rights

The authors undertook a search of the tenure data on the British Columbia government's Mineral Titles Online (MTO) website which confirms the geospatial locations of the claim boundaries, expiry dates, and ownership as of December 31, 2025.

In British Columbia, the owner of a mineral claim acquires the right to the minerals that were available at the time of claim location and as defined in the Mineral Tenure Act of British Columbia. Surface rights and placer rights are not included. Claims are valid for one year and the anniversary date is the annual occurrence of the date of record (the staking completion date of the claim). Unless otherwise noted, the current mineral claims are on crown land and no further surface permission is required by the mineral tenure holder to access mineral claims.

To maintain a claim in good standing the claim holder must, on or before the anniversary date of the claim, pay the prescribed recording fee and either: (a) record the exploration and development work carried out on that claim during the current anniversary year; or (b) pay cash in lieu of work. The amount of work required in years one and two is \$5 per hectare per year, years three and four \$10 per hectare, years five and six \$15 per hectare, and \$20 per hectare for each subsequent year. Only work and associated costs for the current anniversary year of the mineral claim may be applied toward that claim unit. If the value of work performed in any year exceeds the required minimum, the value of the excess work can be applied, in full year multiples, to cover work requirements for that claim for additional years (subject to the regulations). A report detailing work done and expenditures must be filed with, and approved by, the B.C. Ministry of Energy and Mines.

4.2 Surface Rights

Surface rights over the northwestern part of the Harrison Gold property are owned by Victor Swiderski of Port Coquitlam, B.C. This private land covers the north western corner of mineral tenure number 382167 but does not convey any undersurface mineral rights to the surface land owner. During the late 1980's Bema obtained an access agreement with the Property owner granting surface access to the property and the portal of the Jenner 187 level was constructed on the private land in 1987. Registered Mail Notice was provided to the land owner in accordance with the Mines Act. There is no current access agreement in place with the Property owner however the BC Mines Act ensures that mineral rights owners can have legal access for exploration and mining purposes.

A number of houses have been built in a small residential area near the lake, a short distance downhill from the historic RN Mine. These are situated on lots 127, 1813, and 1835. At least one temporary water lease is in effect on Jenner Creek, and a number of water lines, (illegal or otherwise) were seen extending to small creeks near the RN Mine. Present surface rights held on or adjacent to the property should be investigated and claim holders are required to notify private land owners if any exploration work will be carried out on their property.

4.3 Permit Requirements

All work carried out on a claim that disturbs the surface by mechanical means (including drilling, trenching, excavating, blasting, construction or demolition of a camp or access, induced polarization surveys using exposed electrodes and site reclamation) requires a Notice of Work permit under the Mines Act and the owner must receive written approval from the District Inspector of Mines prior to undertaking the work. The Notice of Work must include: the pertinent information as outlined in the Mines Act; additional information as required by the Inspector; maps and schedules for the proposed work; applicable land use designation; up to date tenure information; and, details of actions that will minimize any adverse impacts of the proposed activity. The claim owner must outline the scope and type of work to be conducted, and approval generally takes one or two months.

Exploration activities that do not require a Notice of Work permit include prospecting with hand tools, geological/geochemical surveys, airborne geophysical surveys, ground geophysics without exposed electrodes, hand trenching (no explosives) and the establishment of grids (no tree cutting). These activities and those that require Permits are outlined and governed by the Mines Act of British Columbia.

The Chief Inspector of Mines makes the decision whether or not land access will be permitted. Other agencies, principally the Ministry of Forests, determine where and how the access may be constructed and used. With the Chief Inspector's authorization, a mineral tenure holder must be issued the appropriate "Special Use Permit" by the Ministry of Forests, subject to specified terms and conditions. The Ministry of Energy and Mines make the decision whether land access is appropriate, and the Ministry of Forests must issue a Special Use Permit. However, three ministries, namely the Ministry of Energy and Mines; Forests; and Environment, Lands and Parks, jointly determine the location, design and maintenance provisions of the approved road.

Notification must be provided before entering private land for any mining activity, including non-intrusive forms of mineral exploration such as mapping surface features and collecting rock, water or soil samples. Notification may be hand delivered to the owner shown on the British Columbia Assessment Authority records or the Land Title Office records. Alternatively, notice may be mailed to the address shown on these records or sent by email or facsimile to an address provided by the owner. Mining activities cannot start sooner than eight days after notice has been served. Notice must include a description or map of where the work will be conducted and a description of what type of work will be done, when it will take place and approximately how many people will be on the site. It must include the name and address of the person serving the notice and the name and address of the onsite person responsible for operations.

4.4 Existing Permits

In 2011 Omineca applied for a surface drilling permit covering the northern part of Bear Mountain (specifically referred to as the Jenner Zone and the Portal Zone) and the north central part of Bear Mountain (specifically referred to as the Hill Zone). This permit (MX-7-119) was received by Omineca and transferred to Bear Mountain in 2012.

On January 31, 2016 Bear Mountain submitted a NOW to the Ministry of Mines (No.0700344) requesting that Permit MX-7-119 be amended to include underground drilling and bulk sampling.

Based on correspondence from the Ministry of Mines dated November 14 2025 the Permit MX-7-119 is in effect until September 23, 2027. As part of the current permitting process Bear Mountain provided \$20,000 as a security deposit to ensure that any required reclamation work will be completed.

In addition to Permit MX-7-119 issued by the Ministry of Mines BMGM entered into Industrial Road Use Permit with the Ministry of Forests dated October 7, 2015. This agreement grants non-exclusive use of the first 600-meter-long segment of the Bear Mountain FSR which provides legal access to all of the existing access trails within the Harrison Project claim area. However, the Road Use Permit requires that BMGM ensure that all required maintenance is carried out on the specified segment of the FSR and the Ministry of Mines regulations require that all use of existing roads utilized by BMGM be approved by a geotechnical engineer.

In order to continue exploration work and drilling beyond September 23, 2027 a new permit application must be submitted to the Ministry of Mines.

The Authors are not aware of any environmental liabilities to which the property is subject.

The Authors are not aware of any other significant factors or risks that may affect access, title or the right to perform work on the Property.

5.0 ACCESSIBILITY, CLIMATE, LOCAL RESOURCES, INFRASTRUCTURE AND PHYSIOGRAPHY

Year-round access to the claims is via the Trans-Canada Highway No.1, approximately 100 kilometers east of Vancouver, and thence B. C. Highway No. 9, which leads north to Agassiz and Harrison Hot Springs. The claim group covers parts of the western and southern slopes of Bear Mountain. The Property is easily accessible by a paved road (Rockwell Drive) connecting the Village of Harrison Hot Springs to the Bear Mountain Forest Service Road which provides access to a network of existing ATV accessible gravel roads and trails on Bear Mountain.

Sections of the Bear Mountain Forest Service Road (“FSR”) beginning approximately 200 meters south of the Jenner and Portal Zones were partially de-activated during 2015 by the Ministry of Forests. The FSR is currently utilized as a hiking trail referred to as the Bear Mountain Trail and will be utilized to provide access for ongoing geological work that does not create any surface disturbance. To minimize the potential impacts of activities which will involve surface disturbance, these activities will need to be reviewed by a geotechnical consultant to ensure such activities do not pose a hazard to residential properties located along Rockwell Drive.

The Property is located within the Coastal Mountain physiographic province of British Columbia. The property covers parts of the western and southern slopes of Bear Mountain and the southern parts of a plateau area referred to as the Bear Mountain Plateau. Slopes vary up to 40° (average 25°) and elevations range from approximately 10 meters at Harrison Lake to 1035 meters on top of Bear Mountain, the highest point of the property. The western slopes of Bear Mountain are visible from Harrison Hot Springs.

The Property can generally be accessed by ATV from April until November and the recommended soil sampling portion of the program could be completed within this time frame. The geological mapping portion of the recommended Stage 1 Exploration Program should be carried out when there is no snow present (generally the Property is snow free from April till the end of October).

The climate is typically coastal with moderate to warm summers, cool wet winters and annual precipitation of 150-250 centimeters. Snow can be appreciable at higher elevations, but exploration activities can proceed year-round at lower levels. Most of the property was logged in the 1960’s resulting in a thick second-growth cover of deciduous and coniferous trees less than 75 centimeters in diameter.

Harrison Hot Springs is a seasonal resort town with hotels, restaurants, gas stations and small convenience stores. The proximity to residential communities is a major economic benefit in the determination of mining economics. Most supplies and services can be obtained in Agassiz or in the larger community of Chilliwack.

6.0 HISTORY

6.1 Previous Exploration Work

Based on the results of the small-scale mining operations carried out at the RN Mine during the late 1970’s and early 1980’s John Davies and Don Allen (A&M Exploration) optioned the underlying claims in 1982 and arranged financing through a publicly traded exploration company called Abo Oil Corp (“Abo Oil”). The first exploration work identified areas to the north, east and southeast of the RN mine workings which exhibit elevated concentrations of “gold in soils”.

The first phases of follow up core drilling in 1983 and 1984 intersected widespread narrow, sub horizontal quartz veins within the diorite stock that hosts the RN mine workings (referred to as the Portal Stock) and also intersected similar style veins within a second small diorite stock

(referred to as the Jenner Stock) located approximately 300 meters northeast of the RN mine workings. One of the initial drill holes that tested the Jenner Stock (DDH 84-28) reportedly intersected 63.2 meters averaging 4.12 g/t gold.

In late 1984 Kerr Addison Mines ("Kerr Addison") entered into a joint venture with Abo Oil to continue the exploration work on the project. During 1985 and 1986 Kerr Addison continued drill testing of the Jenner and Portal Zones, staked additional claims, expanded the soil geochemical survey grids to the central part of Bear Mountain and identified several new areas which exhibit elevated "gold in soil" concentrations. Significant mineralized intercepts reported for the Jenner Zone included DDH 85-36 which intersected 102 meters averaging 3.54 gm/tonne gold and DDH 86-48 which averaged 5.28 gm/tonne over 24 meters. Results from the Portal Zone included DDH 86-43 (approx. 150 m east of the RN Mine) which averaged 9.78 gm/tonne over 7 meters. This work also confirmed the presence of several additional diorite stocks, referred to as the Hill and Lake Stocks, which exhibit mineralization similar to the Portal and Jenner Stocks.

Based on the results reported by Abo Oil and Kerr Addison, Bema International ("Bema") entered into a joint venture agreement with Kerr Addison in 1987 and purchased controlling interest in the shares of Abo Oil giving Bema majority ownership of the project. Between 1987 and 1990 Bema and Kerr Addison completed extensive drill testing; constructed 350 meters of underground drifts and raises within the Jenner Zone (referred to as the 187 Level); carried out a bulk sampling program and assessed possible mining options for the Jenner Zone.

Drilling carried out by Bema confirmed the results reported by Kerr Addison from the Jenner Zone and intersected the deepest and highest-grade mineralized interval encountered within this intrusive. DDH 88-121 was drilled from the east end of the Jenner 187 level to test the depth extent of mineralization within the Jenner Zone and intersected a mineralized zone (referred to as Jenner Deeps) which averaged 13.50 g/t gold over 9 meters from 254 to 263 meters. It is important to note that this intercept was encountered at a depth of 70 meters below sea level and that no follow up drilling has been carried out to delineate the extent of this mineralization.

Significant, drill intercepts were also reported from the eastern part of the Portal Stock including DDH 88-76 which intersected 7 meters averaging 21.4 g/t from 91 to 98 meters and DDH 88-88 which intersected 25 meters averaging 3.77 g/t gold from 95 to 120 meters (including 6 meters averaging 8.07 g/t gold from 95 to 101 meters and 5 meters averaging 7.60 g/t from 115 to 120 meters).

Bema's drill testing of the Hill Stock located approximately two kilometers to the southeast of the Jenner and Portal Zones identified similar mineralization including LK 88-130 which intersected 30 meters averaging 3.08 g/t gold in the eastern part of the intrusion and 29 meters averaging 1.56 g/t gold including 7 meters averaging 3.5 g/t gold in an area referred to as the Breccia Zone developed along the west side of the Hill Stock.

In 2000 the mineral tenures covering Bear Mountain were allowed to lapse and were staked by Omineca's parent company TSX listed Eagle Plains Resources. In 2001 an airborne magnetic and EM survey was completed over the northern and central parts of Bear Mountain. Subsequent interpretive work by Condor Geophysics, 2005 supports the interpretation reported by Daignault and Malmberg, 2005 that the intrusions are localized within the HLSZ and concluded that the diorite intrusions may be more extensive than mapped.

Northern Continental Resources ("Northern Continental") optioned the claims from Eagle Plains in 2003 and follow up drill testing between 2003 and 2005 encountered mineralization on the north side of the Hill Stock including ABO-0510 which intersected 12 meters averaging 3.0 g/t and 7.7 meters averaging 1.7 g/t. It is important to note that the mineralization encountered within the Hill Stock was intersected at elevations ranging from 500 to 600 meters above sea level which is several hundred meters higher than the mineralized intervals reported from the Jenner and Portal Zones. The overall depth extent of this mineralization has not been tested. Northern

Figure 6b: Hill Stock Drill Holes

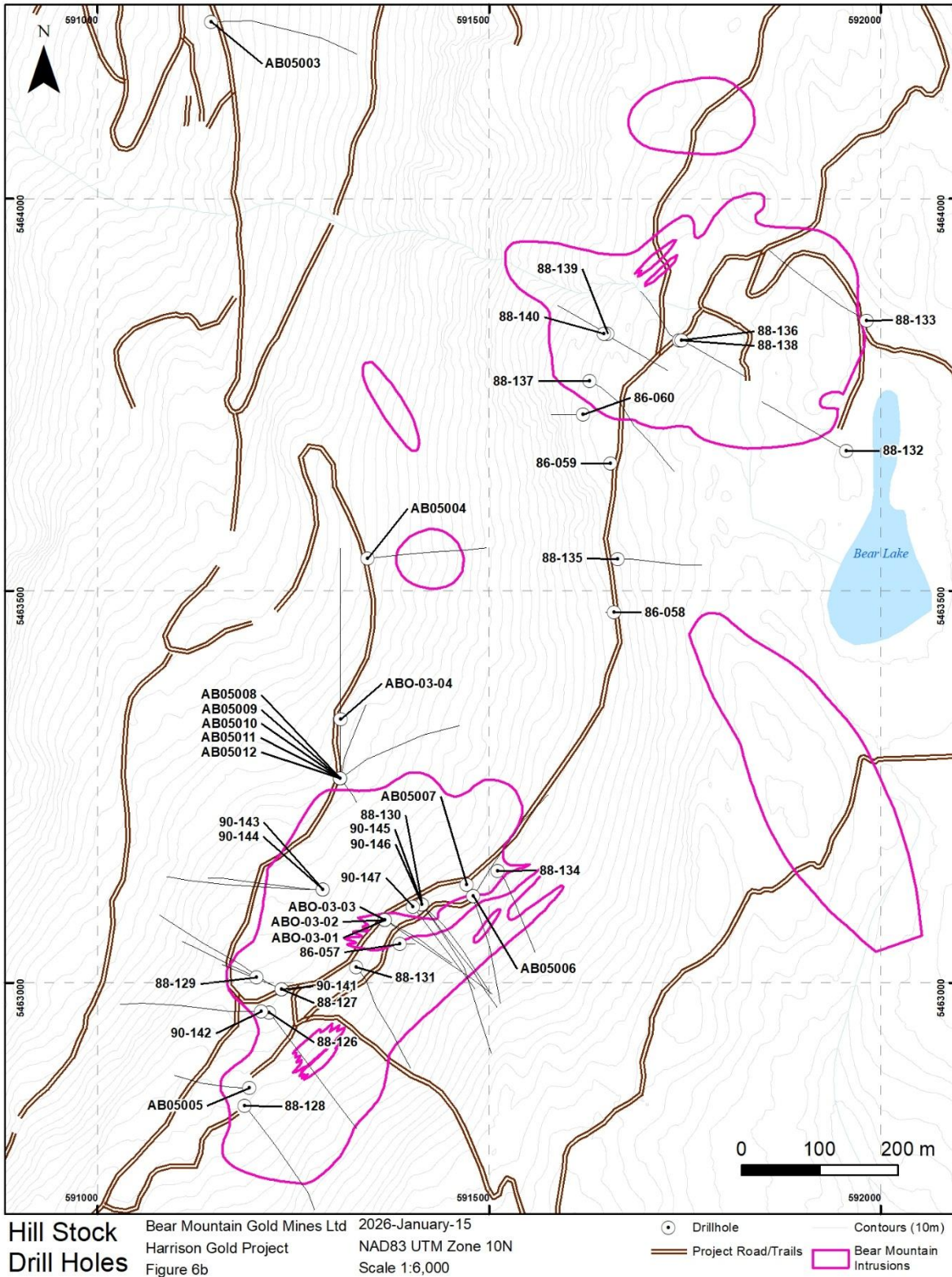


Table 6.1: Historic Drilling

Hole ID	Depth m	UTM E NAD83 Z10	UTM N NAD83 Z10	Elevation m	Azimuth	Dip
83-001	61.26	591016.03	5465282.19	132.27	0	-90
83-002	46.66	591019.60	5465350.23	120.24	0	-90
83-003	63.1	590998.22	5465169.68	165.58	0	-90
83-004	178.91	591141.00	5465250.21	220.29	0	-90
83-005	122.52	591109.63	5465250.14	198.45	165.5	-45
83-006	95.09	591111.33	5465252.84	199.07	71	-45
83-007	91.43	591153.47	5465305.95	217.36	0	-90
83-008	148.13	591154.47	5465304.95	218.26	160	-45
83-009	117.95	591063.07	5465169.08	195.56	0	-90
83-010	50.9	591042.03	5465236.91	159.97	0	-90
83-011	14.32	590983.34	5465263.52	127.22	0	-90
83-012	4.6	590996.02	5465272.25	128.49	0	-90
83-013	68.27	591186.52	5465240.89	253.41	134.5	-45
83-014	79.24	591186.76	5465244.69	252.86	258	-75
83-015	244.1	591162.03	5465396.71	200.45	90	-45
83-016	49.4	591164.51	5465400.59	201.26	0	-90
83-017	34.4	591182.33	5465504.09	182.81	0	-90
83-018	340.8	591184.11	5465507.64	182.93	90.5	-46.5
83-019	91.7	591236.89	5465392.36	245.47	279.5	-65
83-020	89.3	591240.59	5465392.36	247.84	98.5	-45
83-021	113.4	591043.73	5465237.10	160.92	89.5	-45
83-022	76.8	591043.13	5465235.11	161.25	154	-45
83-023	123.4	591239.14	5465255.42	286.50	303.5	-60
83-024	62.5	591259.22	5465325.87	285.98	2	-75
83-025	77.4	591260.62	5465323.37	288.51	110	-60
83-026	125	591211.86	5465324.89	254.15	164	-60
83-027	168.5	591192.99	5465290.25	248.21	99	-75
84-028	99.5	591300.15	5465467.52	230.20	343	-73
84-029	122	591302.14	5465467.02	232.36	122	-55
84-030	140.7	591301.44	5465468.12	231.41	45	-45
84-031	143.5	591357.40	5465576.99	266.87	282	-72.5
84-032	100.5	591326.30	5465635.88	235.34	278	-65.2
85-035	25	591278.41	5465501.77	199.96	187	-88
85-036	193.5	591278.41	5465501.77	199.96	90	-57
85-037	202	591228.33	5465448.28	224.98	87.3	-62
85-038	263	591228.33	5465448.28	224.98	89.9	-44.7
86-039	273	591278.41	5465502.17	199.83	91.8	-67.4
86-040	121	591279.91	5465502.17	202.02	89.5	-41.25
86-041	99	591280.31	5465502.17	202.59	90.3	-24.1
86-042	81.5	591281.01	5465502.17	203.48	91.1	12.15
86-043	257	591183.59	5465267.34	246.43	88.2	-70
86-044	15	591180.49	5465267.54	244.23	270	-54
86-045	200	591185.56	5465271.94	246.85	272.9	-65.1
86-046	77	591288.70	5465478.07	214.56	100.3	-84.7
86-047	225	591288.79	5465478.07	214.67	90.2	-60
86-048	102.5	591289.50	5465478.17	215.44	86.3	-35.2
86-049	80.5	591290.30	5465478.17	216.32	85.8	-5.7
86-050	69	591290.21	5465448.98	227.76	94.7	-34.5

Hole ID	Depth m	UTM E NAD83 Z10	UTM N NAD83 Z10	Elevation m	Azimuth	Dip
86-051	156	591290.21	5465448.98	227.76	94.3	-54.2
86-052	108.5	591290.21	5465448.98	227.76	97	-68.1
86-053	106	591286.39	5465421.81	250.36	93.1	-46.1
86-054	48	591762.16	5464942.86	656.02	270	-50
86-055	33	591945.18	5465176.05	672.71	64	-50
86-056	48	591865.33	5465298.03	627.69	60	-50
86-057	35	591386.30	5463049.80	760.55	90	-55
86-058	29	591660.30	5463472.80	816.34	270	-65
86-059	24.5	591655.30	5463662.80	833.59	90	-65
86-060	83.3	591620.30	5463724.80	823.39	270	-60
86-061	51.1	591889.09	5465381.22	558.49	65	-59.5
86-062	38.9	591833.32	5465379.90	566.42	311	-55.5
87-063	110	591190.24	5465486.44	188.74	90	1.25
87-064	28.8	591290.25	5465501.51	192.28	267.6	68.1
87-065	75.3	591306.47	5465486.68	188.70	87.5	1.5
87-066	34.7	591291.64	5465477.02	192.23	284.8	85.3
87-067	42.4	591303.89	5465449.72	192.13	276.7	67.9
88-068	26.5	590986.45	5465259.15	130.01	0	-90
88-069	161.6	590987.91	5465259.00	130.57	95	-49.7
88-070	199.9	591068.81	5465263.92	167.15	99	-59.7
88-071	151.2	591068.15	5465262.78	166.93	282.3	-69.8
88-072	145.4	591045.30	5465236.29	162.14	277.5	-69.8
88-073	178.9	591137.18	5465244.62	218.79	97.5	-44.6
88-074	168.9	591137.18	5465244.62	218.79	98.2	-60.5
88-075	71.3	591109.59	5465212.54	208.82	356.5	-45.15
88-076	166.7	591172.75	5465217.48	249.85	219.2	-62.75
88-077	63.1	591249.13	5465278.84	288.92	0	-59.25
88-078	116	591173.78	5465220.40	249.71	2.5	-44
88-079	169.8	591172.75	5465218.58	249.53	7.2	-68.5
88-080	215.5	591157.99	5465185.84	247.62	355.8	-49.1
88-081	288.6	591139.86	5465154.16	239.89	6	-60
88-082	185	591233.38	5465249.61	283.67	1.25	-69.5
88-083	352.7	591233.38	5465249.61	283.67	0	-80
88-084	221.6	591115.28	5465120.28	236.99	6.8	-48.4
88-085	212.75	591314.88	5465197.75	354.86	0	-60
88-086	354.48	591278.60	5465238.07	318.34	0	-75
88-087	406.99	591265.94	5465163.83	330.82	0	-75
88-088	154.84	591218.73	5465206.78	285.45	0	-50
88-089	182.27	591218.73	5465206.78	285.45	0	-66
88-106	85	591308.50	5465487.93	188.30	360	-25
88-107	68.6	591308.50	5465487.43	187.60	360	-60
88-108	84.4	591308.50	5465484.54	187.60	180	-40
88-109	64.9	591308.50	5465487.93	189.90	360	-30
88-110	74.1	591337.03	5465488.69	190.30	360	-30
88-111	189	591336.83	5465487.59	187.70	360	-70
88-112	90.8	591336.83	5465485.60	187.70	180	-55
88-113	164	591336.83	5465488.29	187.70	360	-50
88-114	76.2	591336.83	5465484.60	191.60	180	-50

Hole ID	Depth m	UTM E NAD83 Z10	UTM N NAD83 Z10	Elevation m	Azimuth	Dip
88-115	117.3	591336.83	5465486.09	187.70	180	-70
88-116	298.4	591334.93	5465485.50	187.70	270	-60
88-117	71.6	591335.84	5465485.50	191.90	0	-90
88-118	109.1	591335.84	5465484.70	187.70	135	-55
88-119	176.5	591375.17	5465489.49	187.90	270	-60
88-120	256	591375.57	5465489.49	187.90	270	-75
88-121	390.5	591375.87	5465488.59	187.90	286.5	-84
88-122	94.8	591336.64	5465488.29	192.00	360	-60
88-123	56.4	591308.21	5465486.43	191.60	0	-90
88-126	325.2	591219.30	5462961.81	720.64	143	-50
88-127	282.24	591235.30	5462991.81	713.90	295	-50
88-128	255.4	591188.30	5462842.80	757.87	143	-50
88-129	155.8	591203.30	5463006.81	703.59	295	-45
88-130	227.7	591414.30	5463099.80	754.29	133.5	-50
88-131	237.44	591330.49	5463019.90	740.12	159	-52
88-132	257.2	591956.30	5463678.80	907.93	300	-60
88-133	243.23	591982.30	5463844.80	916.27	300	-50
88-134	180.44	591511.30	5463142.80	778.90	156.5	-50
88-135	196.6	591664.30	5463540.80	820.27	90	-55
88-136	185.93	591743.30	5463819.80	861.86	300	-60
88-137	300.84	591628.30	5463767.80	830.98	120	-55
88-138	188.37	591746.30	5463819.80	862.63	120	-55
88-139	148.43	591651.30	5463827.80	827.93	300	-60
88-140	164.29	591647.30	5463827.80	826.33	120	-55
90-141	281.64	591235.30	5462991.81	713.90	295	-70
90-142	288.34	591209.30	5462963.81	717.95	270	-50
90-143	312.76	591288.30	5463118.80	685.85	270	-50
90-144	391.97	591288.30	5463118.80	685.85	270	-70
90-145	337.47	591414.30	5463099.80	754.29	143	-60
90-146	305.7	591414.30	5463099.80	754.29	143	-81
90-147	186.5	591402.72	5463097.19	749.92	143	-45
93-148	448.03	591295.03	5465470.95	223.94	66.09	-74.4
93-149	301.75	591203.72	5465541.19	180.72	66.09	-45
AB05001	149.05	590978.60	5465241.00	134.68	90	-60
AB05002	196	591044.00	5465232.00	162.84	360	-80
AB05003	302.06	591145.00	5464226.00	368.94	90	-50
AB05004	199.64	591345.00	5463541.00	583.91	75	-45
AB05005	263.35	591194.00	5462866.00	751.94	270	-70
AB05006	279.8	591480.00	5463111.00	777.68	18	-60
AB05007	291.99	591472.00	5463125.00	768.43	160	-60
AB05008	197.51	591310.00	5463261.00	648.70	16	-60
AB05009	304.19	591310.00	5463261.00	648.70	54	-60
AB05010	285.9	591310.00	5463261.00	648.70	144	-85
AB05011	294.43	591310.00	5463261.00	648.70	185	-60
AB05012	230.73	591310.00	5463261.00	648.70	90	-80
ABO 03-01	228.7	591367.00	5463080.00	738.96	124	-44
ABO 03-02	204.2	591367.00	5463080.00	738.96	124	-58
ABO 03-03	204.8	591367.00	5463080.00	738.96	0	-90
ABO 03-04	43.6	591311.00	5463336.00	624.07	0	-90

6.2 Summary of BMGM Drilling and Recent Rock Sample Preparation

In the past, drill core was selected for assay based on the presence of quartz veining, and visible sulphide mineralization. The majority of the samples were taken over 1m lengths, with some shorter intervals sampled based on geological or mineralogical parameters. Prior to 2003 drilling, in excess of 5400 samples were collected and sent for analysis. Selected sections and geologically interesting features were split in half by diamond sawing. The remainder of the mineralized intervals were split with a mechanical core splitter in a facility located on the property. In some cases, all core was analyzed to try to reduce the nugget problem. For the early drilling, core samples were sent to:

- Rosbacher Laboratory in 1983 for A=M Resources
- Chemex Laboratories for Kerr Addison Mines Ltd.
- Min-En and Chemex Laboratories for Bema Gold. With check assays at Acme Laboratory, Vancouver
- Ecotech Laboratories for Eagle Plains and Northern Continental
- ALS Global Laboratory in N. Vancouver for all sample analysis carried out by BMGM

The description of the assay methods utilized by previous workers during the 1980's (primarily Kerr Adisson and Bema) is not well described in the assessment reports and, therefore, the historical assay results must be considered with prudence. In general, it appears that the majority of the reported drill core intercepts were analyzed by standard, one assay ton (30-gram samples) fire assay techniques.

In addition to the detailed geological descriptions contained in the drill logs Bema and Kerr Adisson completed a visual count of the gold grains observed in each assay interval and maintained a photographic record of the drill core prior to splitting and logging. It is important to note that some assay intervals which contain visible gold grains returned very low gold grades and that no systematic comparison between metallic gold assays and conventional one assay ton fire assays appear to have been carried out.

It is also important to note that Norman 1989, reported that assay studies comparing the data from underground muck sampling and drill assay data suggest that there could be a significant upgrading factor (as much as 50%). It is possible that this discrepancy is related to the fact that conventional one assay ton fire assay techniques only analyze the material that passes through 100 mesh screens and does not measure the contribution of larger gold grains.

All 2005 samples were analyzed at EcoTech Laboratories Ltd. (ISO 9000 certified), 10041 Dallas Drive Kamloops, British Columbia, Canada, V2C 6T4. The samples were analyzed using and ICP-MS (Mass Spectrometer) methods with an Au metallic assay with cyanide leach finish. The Methods and Specifications information for the EcoTech procedures follows:

To determine whether or not the standard one assay ton fire assay technique utilized by previous operators may have under reported the contribution of coarse gold in historic sampling programs Bear Mountain has submitted 31 samples for metallic gold analysis. Refer to ARIS Report 40021.

Samples analyzed by this technique are analyzed for gold by standard one assay ton fire assay techniques and the material remaining on the screens is also analyzed. For each sample two determinations are made using the standard fire assay techniques and these results are reported as the Au (-) fraction. The gold contained in the material that did not pass through the screen is reported as the Au (+) fraction. The results of the two standard fire assay samples are averaged and the gold contained in the material that did not pass through the screen is added to provide an estimation of the "Total gold" that is contained in the samples that were submitted.

6.3 Summary of Drillhole Database

Based on a review by McElhenny Engineering of the historic drillhole collar file the database compiled before the Lidar data covering Bear Mountain was acquired in 2018 showed that drill hole collar elevations had been mapped from stereo air photo. These values are stored in the collar table in the column “ddh_loc_elev_m”. The column “ddh_loc_elev_m_log” is presumably the original elevation value. In forested and steep terrain photogrammetric mapping typically produces horizontal and vertical errors of several metres.

Although no information was obtained regarding the absolute accuracy of the Kent LiDAR DEM accuracy it would be typical of modern LiDAR data to have a relative error in this kind of terrain of better than ± 0.5 m (better than ± 0.2 m is common, and we often achieve better than 10 cm RMSE compared to RTK ground control). When drill hole collar elevation offsets relative to LiDAR elevations were calculated (in Datamine Discover) it was found that offsets of several metres were common. It was then assumed that the LiDAR DEM elevation values were likely far more accurate than the photometrically determined elevation values that had previously been assigned to the drillholes.

An additional elevation column, “ddh_elev_use”, was created along with a note’s column named “ddh_elev_comment”. For surface drillholes the “ddh_elev_use” column was updated in Datamine Discover with values derived from the LiDAR DEM. For underground drillholes the “ddh_elev_use” column was updated with values from the “ddh_loc_elev_m” column, which preserved the underground elevation values in the historical database. The “ddh_elev_comment” Column was then updated with information about where each elevation value in the “ddh_elev_use” column came from. The “ddh_elev_use” columns were then used for all subsequent work in 2D and 3D. Table 6.1 in Section 6 lists the historic drill holes.

6.4 Norman’s 1989 Resource Estimate for Bema

Based on the drilling completed above the 50-meter ASL level Norman, (1989), using a one gram cut off grade for the Jenner Zone and a 2-gram cut off grade for the Portal Zone estimated that the Jenner and Portal Zones contain 2,458,674 tons at an average grade of 2.79 g/t or 220,300 ounces.

This historical estimate is relevant to the Harrison Gold Property as it suggests there may be mineralization present. However, this estimate does not use the resource categories as defined by CIM and the differences to the CIM categories are not known. The qualified person has not done sufficient work to classify the historical estimate as a current mineral resource. The Company is not treating the historical estimates as a current mineral resource.

The estimate for the Jenner Zone was based on a total of 2,920 meters of inclined diamond drilling in 21 surface holes and 2,754 meters of vertical and inclined diamond drilling in 23 underground holes. The drilling was completed during the period 1983 to 1988. Drill holes are variously oriented east-west, north-south and at several off-sectional azimuths. According to Norman, drill hole information is relatively sparse in the north half of the stock (north of 9500 N) and little drilling was done below the 50-meter level (ASL).

The previously described gold zones established the basis from which Norman estimated a number of separate categories. His methods of mineral (resource) block delineation and other (resource) estimation procedures are outlined in point form below: Parameters of the tonnage/grade calculation were as follows, as summarized by Norman, (1989).

- The sectional method of mineral reserve (“Mineral Resource”) estimation was employed because of the predominantly low-angle structural characteristics of the mineralized vein systems and interpreted gold zones.

- Gold histograms, which show natural assay "breaks" down a drill hole, were relied upon for determining the length over which an average assay would be calculated.
- In general, for averaging purposes, the minimum drill intercept considered was 3 meters at a 1.0 g/t Au cut-off. In some cases, where immediately adjacent drill hole information indicated continuity, intercepts of less than 3 meters averaging marginally less than 1 g/t Au were used to delineate gold zone boundaries, (e.g. 0.94 g/t Au).
- Zones of internal waste consisting of 5 or more consecutive one-meter sample intervals, each assaying less than 1.0 g/t Au, were not included in reserve blocks.
- All mineralized intercepts, including those encountered in north-south and off-sectional drilling (the latter included JNUG 84-29 to 84-30 and 88-118) were accounted for on east-west mineral reserve ("Mineral Resource") block sections. This was done by projecting the midpoint of the mineralized intercept to the appropriate section. In some cases, in order to preserve geological integrity intercept midpoints were projected to certain sections even though their location may have been up to as much as 5 meters beyond the "window of influence" for that section.
- Reserve ("Mineral Resource") blocks containing more than one assay intercept, projected or otherwise, were assigned a grade equal to the weighted average of all included intercepts.
- Probable resource blocks were established by projecting block boundaries a distance of 15 meters away from the mid- point of the drill intercept. Direction of projection was parallel to the inferred contacts of the interpreted mineralized zones.
- Possible resource blocks were established by projecting block boundaries an additional 30 meters beyond the outer limit of probable block boundaries. The grade assigned was the same as that of the adjacent probable block.
- Where adjacent sectional information indicated the likelihood that a given mineralized zone would extend to the margins of the stock, possible resource blocks, (with no assigned grade) were established beyond the limits of those defined under paragraph 3. Similarly, where adjacent sectional information demonstrated continuity of a gold zone into an area with no drill hole information, a possible resource block (again with no assigned grade) was established.
- The bisectrix of the angle between adjacent drill holes on the same section formed resource block boundaries.
- The length of sectional projection was one-half the distance between adjacent sections, except for the southern and northernmost sections (9450 N and 9575 N respectively), the distance of projection was limited by the margin of the stock.
- Xenoliths were assigned as waste unless indicated otherwise by drilling.
- Since there was no east-west sectional information to the north of 9500 N, it was necessary to construct projected mineral reserve ("Mineral Resource") block sections based on north-south and off sectional drill hole information. The method of projection of assay intercept midpoints was as in that described in point 5.

Jenner Zone

A summary of the estimate for the Jenner zone from Norman's 1989 study is shown as follows:

Table 6.2: Historical Tonnage and Grade Estimate for the Jenner Zone

Mineralized Zone	Resource Category	Resource Tonnes	Grade Au g/t
Jenner Stock	"Probable Resource"	1,344,000	2.67
Jenner Stock	"Possible Resource"	457,000	2.83

Portal Zone

The total amount of drilling to 1989 on the Portal Stock was 6,978 meters (22,895 feet) in 50 drill holes. In 1983, when most of the drilling was done on the Portal Zone, the geometry of the Portal Stock was not well known, and diamond drilling, exploratory in nature, produced a seemingly random drilling pattern. This random aspect created numerous interpretational problems on cross-sections and level plans through the stock. Additional diamond drilling by Bema during the fall of 1988 concentrated on the eastern portion of the stock (east of 11040 E) which had produced the best gold mineralization intercepts to date.

According to Norman, (1989), geological level plans and surface mapping showed that the stock could be divided into two distinct geological domains. The western portion of the stock is roughly circular, with an average diameter of 140 meters and fairly smooth or regular contacts. The eastern portion of the Portal Stock is dyke-like, narrowing from approximately 100 meters in the west to 40 to 50 meters near the eastern contact, and has irregular contacts. East - west oriented vertical geological sections constructed by Bema geological personnel suggest the entire stock is plunging approximately 70° to the east.

Similar Probable and Possible categories were calculated, as for the Jenner Zone, with “probable reserves” defined by projection of a known drill intercept up to 15 meters outward and “possible reserves” defined by projection of the probable block boundaries an additional 30 meters. The resource parameters were identical to those used in the Jenner study.

Table 6.3: Historical Tonnage and Grade Estimate for the Portal Zone

Mineral Zone	Category	Tonnes*	Grade Au g/t
Portal Stock	“Probable Resource”	500,000	3.12
Portal Stock	“Possible Resource”	157,000	2.69

* rounded from Norman’s original numbers

Table 6.4: Combined Jenner and Portal Zone Historical Resources Estimates

Mineral Zone	Category	Resource Tonnes	Grade g/t Au	Grams	Ounces
Jenner zone	“Probable and Possible”	1,801,134	2.71	4,876,635	156,710
Portal zone	“Probable and Possible”	657,753	3.02	1,984,324	63,766

All the Norman resource estimates are uncut and undiluted, with a 1.0 g/t gold cut-off used for the Jenner Zone. A cut-off grade of 2.0 g/t gold was used for the Portal Zone. The conversion from grams to ounces is at 31.119 grams per ounce. Stated ounces are in-situ and would be diminished on production by a number of recovery factors which cannot be calculated at this time.

This historical estimate is relevant to the Harrison Gold Property as it suggests there may be mineralization present. However, this estimate does not use the resource categories as defined by CIM and the differences to the CIM categories are not known. The qualified person has not done sufficient work to classify the historical estimate as a current mineral resource. The Company is not treating the historical estimates as a current mineral resource.

7.0 GEOLOGICAL SETTING AND MINERALIZATION

7.1 Regional Geology

Tectonic Terranes and Basement Rocks: According to Gabrielse and Yorath (1991) the regional geology of the project area can be divided into four tectonically, lithologically and structurally distinct regions known as the Coast Complex, Shuksan (SH), Chilliwack (CK) and Harrison (HA) terranes. (Gabrielse and Yorath, 1991) (Figure).

The Harrison Lake Property is situated predominantly on the Coast Complex geological terrane. The Coast Complex consists of discrete plutons that intrude sub-greenschist to amphibolite-facies volcanics, sediments and orthogneiss (Gabrielse and Yorath, 1991). Although magmatism was most voluminous during the Mesozoic, the Coast Complex includes intrusions that formed during the Paleogene and Neogene. This includes the 5-km in diameter, elongated, felsic, Hicks Lake Batholith which outcrops in the eastern part of the Property (Figure).

Due to the Coast Complex being predominantly composed of accretionary intrusions and related volcanic rocks, mineral deposits associated with the terrane include Volcanogenic Massive Sulphide deposits (i.e. Britannia Mine, BC); porphyry deposits (i.e. OK deposit, Powell River) and Cu-Pb-Zn-Ag skarn deposits, such as those on Banks Island, BC (Gabrielse and Yorath, 1991). The Cenozoic-aged Coast Complex rocks are representative of the post-accretionary stage of magmatism and are also host to notable mineral deposits (Gabrielse and Yorath, 1991). Eocene-aged mineral deposits include the Hyder Pluton porphyry deposit near Stewart, BC while Oligocene- to Miocene-aged deposits include Au and Ag-mineralization associated with the high-level, calc-alkaline plutons spatially associated with the Chilliwack Suite of Plutons (Gabrielse and Yorath, 1991).

The western margin of the Harrison South Gold Property and a minor portion of the Harrison Gold Property are partially composed of the Harrison geological terrane. The Harrison terrane makes up part of the Insular Superterrane and is composed of pre- to syn-accretionary strata (Gabrielse and Yorath, 1991). The Harrison Lake terrane is host to Jurassic-aged VMS deposits such as the Seneca deposit, located to the west of Harrison Lake hosted by andesites and rhyolites of the Harrison Lake formation (Gabrielse and Yorath, 1991).

Within the Harrison Gold Property, the surface bedrock is composed of three, non-intrusive units: the Gambier Group (IKGsv); the Sollicum Schist (KTSI); and the Chilliwack Group (DPC). The Gambier Group (IKGsv) consists of thick sequences of Early Cretaceous clastic and volcanic rocks deposited in a volcanic arc setting (Ray 1991; Lynch 1992). Notable formations within the Gambier Group include the Brokenback Hill formation which is a late Valanginian to Albian succession of mafic to felsic volcanic and pyroclastic units deposited in a marine and sub-aerial environment (Lynch, 1995).

The Sollicum Schist (KTSI) is a metasedimentary and mafic-metavolcanic formation of the Cogburn Creek Group which is part of the Shuksan Terrane (Gabrielse and Yorath, 1991). The Sollicum Schist has undergone sub-greenschist to amphibolite grade metamorphism during the accretion of the Intermontane Superterrane (Gabrielse and Yorath, 1991).

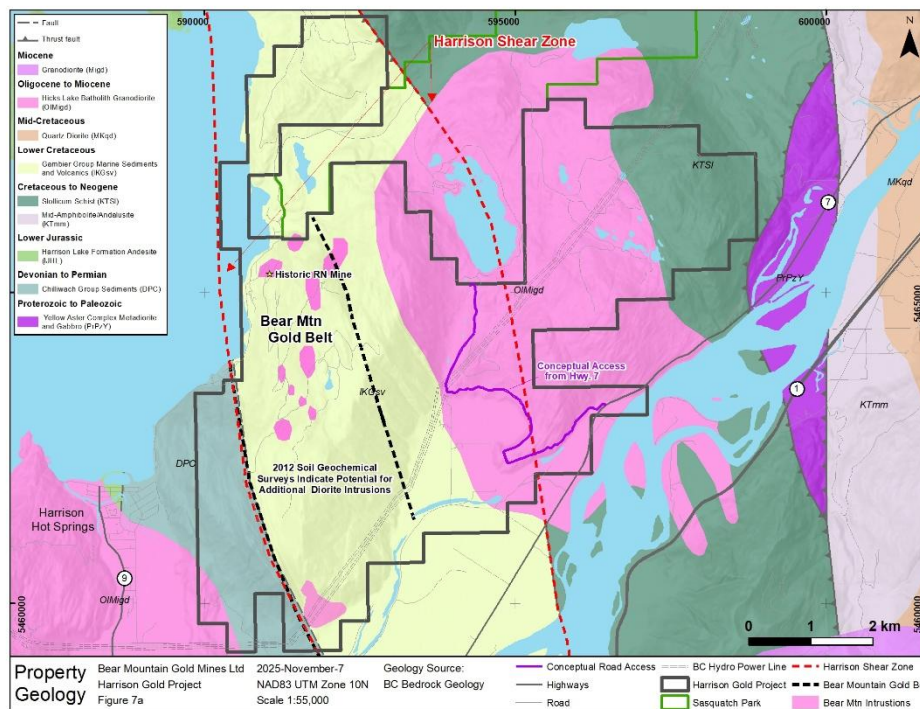
The Chilliwack Group consists of fine-grained turbiditic siltstones, sandstones, and carbonates that are conformably overlaid by volcanics, cherts, sandstones, conglomerates, and tuffs (Gabrielse and Yorath, 1991). The Devonian sediments of the Chilliwack group are the oldest assemblage of the Chilliwack Terrane (Gabrielse and Yorath, 1991). The Chilliwack group was deposited in a volcanic arc setting (Gabrielse and Yorath, 1991).

7.2 Property Geology

Within the Harrison Gold Property, the Hicks Lake Batholith and the smaller (< 1 km²), felsic stocks localized along the HLSZ are, at a regional scale, mapped as members of the Chilliwack Suite of Plutons (OIMigd) (Fig. 5). The Hicks Lake Batholith has intruded into the boundary between the Gambier Group (IKGsv) and the Sollicum Schist (KTSI). The smaller intrusive stocks (< 1 km²), ten of which are mapped at a regional scale, have intruded into the Gambier Group (IKGsv). A second, large (>0.5 km²), Oligocene- to Miocene-aged, batholith of the Chilliwack Suite of Plutons (OIMigd) has intruded into the Chilliwack Group and the Harrison Lake Formation. This intrusion outcrops in the most southeasterly corner of the Property (Fig. 5). Another, smaller (~ 1 km²), diorite intrusion, believed to also be a member of the Chilliwack Suite of Plutons (OIMigd) is known to occur within the most southern portion of the Property (Fig. 5). This diorite is not mapped within the regional mapping compiled by the BCGS (Cui et al., 2017), rather the pluton was located during the 1992 geochemical surveying program completed by Pickwick Explorations Ltd. (Cooke, 1992). This diorite occurs on trend with the small quartz diorite and diorite stocks of the Harrison Gold Property within the NNW-SSE oriented “HLSZ”.

The major structural feature within the Harrison Gold property is the Harrison Lake Fault or Shear Zone (HLSZ) which is an NNW-SSE trending, major, right-lateral, strike-slip fault/shear zone that has juxtaposed the Gambier Group (IKGsv) to the east with the Chilliwack Group (DPC) and the Harrison Lake Formation (IJHL) to the west. The HLSZ extends for more than one hundred kilometers from the Lillooet River, BC into Washington, USA. Strike-slip faults within HSLZ are among the major strike-slip faults in the region that largely governs the regional grain of the adjacent rocks (Gallagher, 2010). The shear zone is a one to two-kilometer-wide fracture zone with a well-developed cleavage which dips 50° to 70° to the east. The age of formation for the HLSZ is estimated to be Late Cretaceous to early Tertiary and post-dates regional metamorphism and the intrusion of the mid-Cretaceous Spuzzum batholith (Gallagher, 2010). The Chilliwack Suite of Plutons (OIMigd) post-dates the HLSZ. Gallagher (2010) suggests the HLSZ has acted as a conduit for both thermal hot springs and hydrothermal fluids along its trend.

Figure 7a: Property Geology



7.3 Recent Geological Mapping

The most recent geological mapping program completed on the Harrison Gold Property was by Eagle Plains Resources in 2005 (Figure) (Daignault and Malmberg, 2005). This mapping covered the northern half of Bear Mountain. The small intrusive stocks believed to be associated with Hicks Lake Batholith were all identified and mapped during this phase of exploration. There are eight main stocks or groups of stocks identified, these are, from north to south, the Jenner stock, Portal stock, Bluff stock, Bear stocks, Lake Stock, Slide stock, Swamp stock and Hill stock. The limited extent of the detailed mapping is shown in Figure 7b, which leaves the southern and eastern portion of the Harrison Gold Property and the entirety of the Harrison South Property without a detailed geological map.

Structural Observations

The intrusions are bound to the east and west by large-scale NNW-SSE trending faulting associated with the 1-2 km-wide Harrison Lake Shear Zone. Secondary, oblique, minor faulting trending NE-SW and SE-NW occur within the Harrison Lake Shear Zone (HLSZ) formed during the dextral strike-slip deformation of the HLSZ (Downie, 2006). The intersection of these structural elements may have allowed for the emplacement of quartz diorite and diorite stocks, the host rocks for auriferous quartz veins. The smaller stocks of the Harrison Gold property are assumed to be genetically related to the Hicks Lake Batholith (Downie, 2006). This structural control on magmatism has created a plutonic 'belt' which trends NNW-SSE consisting of small, elongate diorite and quartz diorite intrusions that formed during the Oligocene and Miocene.

The structurally bound nature of the diorite and quartz diorite stocks confined by faulting associated with the HLSZ allows for the possibility of other intrusives of the Chilliwack Suite of Plutons to be located on trend (NNW-SSE) within the Harrison Gold and Harrison South Gold claim groups. The diorite intrusion within the Harrison South Gold property is likely related spatially and temporally to the other exposed stocks and would therefore suggest an intrusive belt trending NNW-SSE potentially representing a Bear Mountain Intrusive Belt.

Intrusions within the Harrison Gold Property

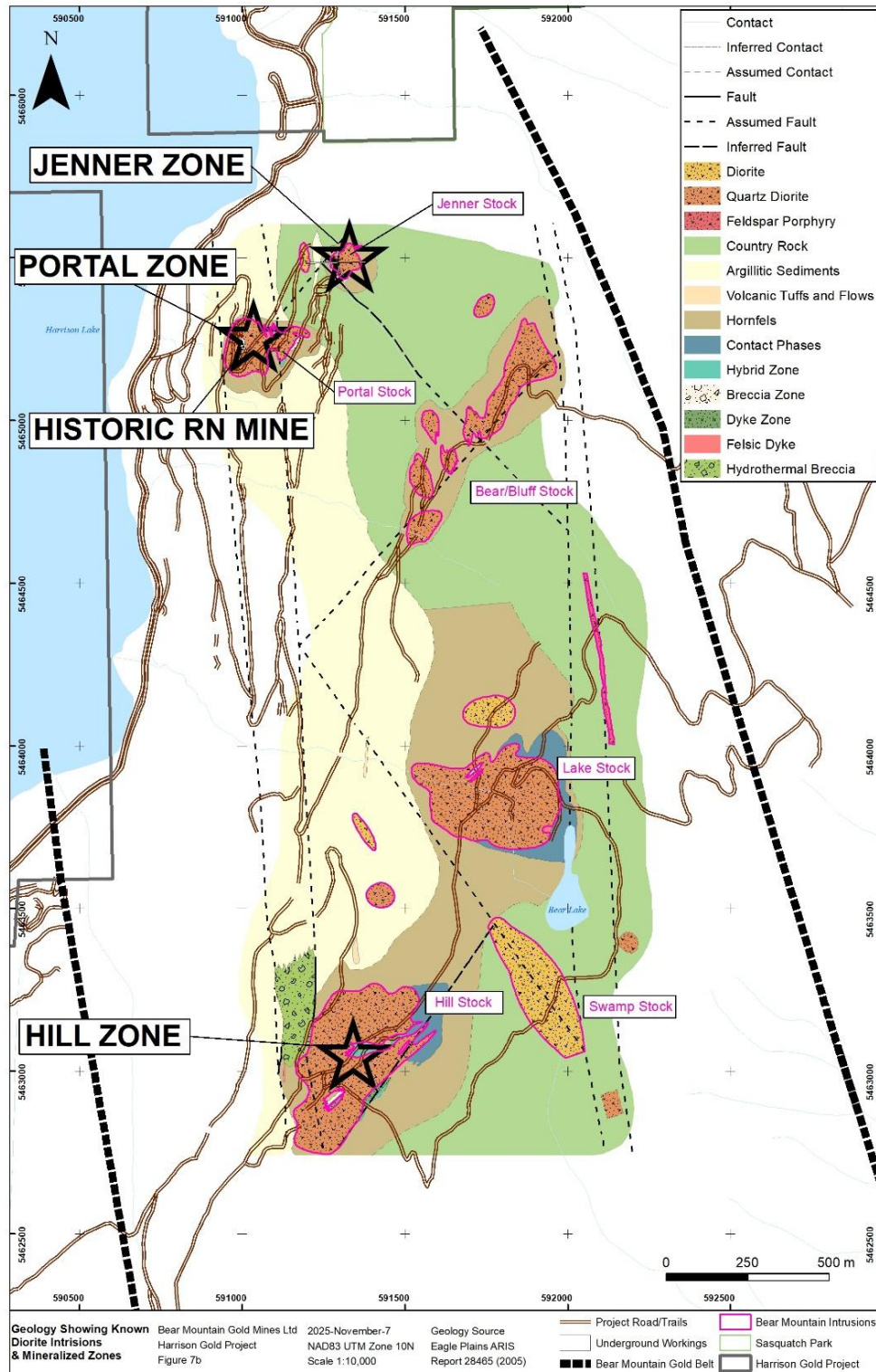
The Jenner stock has been studied in the most detail. The Jenner stock is a small (< 0.5 km²), subcircular, quartz diorite that has intruded into the sedimentary and volcanic rocks of the Broken Hill Formation (Downie, 2006). There are two recognised intrusive phases. The central and upper portions of the stock are described as a medium- to coarse-grained, hornblende-biotite diorite that is circular to slightly elliptical in plan view. The lower portion of the stock resembles a fine-grained, biotite-(hornblende) quartz diorite that becomes increasingly elongate with depth (Downie, 2006). The stock plunges 80°-85° E with a cone- or pipe-like shape. Age dating studies suggest a timing of formation of ~24 Ma (Richards and White, 1970). The stock has been discordantly crosscut by numerous felsic, and less commonly mafic, dykes (Downie, 2006). Contact breccia phases occur along the margins of the intrusion. This contact breccia has two phases: a quartz-diorite/country rock breccia phase which transitions into a country rock-only breccia. Xenoliths are common within the stock (Downie, 2006).

The Portal stock is divided into two separate domains. The western portion is approximately circular with smooth or regular contacts, while the eastern portion has been noted as being 'dyke-like' with an elongated nature with irregular or bulging contacts (Downie, 2006). The Portal stock plunges ~70° E.

The largest and best exposed stock in the Harrison Gold property is the Lake stock, located 1.7 km south of the Jenner stock. It is massive in texture with little variation in composition throughout, with the exception of local variations in the size of amphibole and the amount of biotite (Downie, 2006). The Lake stock has an extensive contact phase along its eastern contact.

The remaining stocks have limited detailed work completed. The Slide, Bear, Hill, and Bluff stocks are all described as quartz diorites, while the Swamp stock is a diorite. Smaller outcrops of other intrusions are also mapped and diorites, as well as feldspar porphyry's which have been intruded along the trend of the HLSZ (Figure 7b). A 20-70-metre-thick contact metamorphic aureole of hornfelsed country rock surrounds the majority of intrusions (Downie, 2006).

Figure 7b: Geology Showing Known Diorite Intrusions and Mineralized Zones



7.4 Mineralization

Gold mineralization within the Harrison Gold property is predominantly described as free visible gold flakes up to 2 mm in size, with most grains 0.2-0.6 mm (Barlow, 2013). These free or visible gold grains are found within quartz veins located within the quartz diorite stocks, near the contact with the thermally altered country rock; some of the auriferous quartz veins also form within the immediate periphery of the intrusions within the country rock (Barlow, 2013). Visible gold can also be seen within open-space sulphide-fillings within hydrothermally altered breccia pipes immediately northeast of the Hill stock (Norman, 1990b).

Multiple intrusions were identified and several potentially economic mineralized zones were reported. Reported mineralized intercepts range from 2 to 5 grams per ton gold over tens of meters to more than 10 grams per ton over widths of 5 to 10 meters including one hole (DDH 88-76) that returned 21.4 grams per ton over 7 meters (Note: reported intercepts are believed to represent 80-90% of true widths). It is also important to note that systematic coarse gold assaying was not carried out as part of the previous drill programs and that Norman, 1989, reported that muck sample results from three underground raises designed to assess the accuracy of drill hole assays showed that the reported drill hole assays may under report gold contents. Limited verification sampling completed by the author confirmed that conventional fire assay methods under report gold contents by up to 40%. Follow up drill testing and underground sampling must include systematic metallic gold assays to ensure an accurate assessment of gold grades.

7.5 Exploration Model

In 1989 Bema proposed an exploration model (Norman, 1989) for the historical mineralization identified within the Jenner zone that involved formation of predominantly low angle vein system(s) whose materials (gold bearing fluids) were derived from the waning phases of intrusive activity. Veins formed in a conjugate shear fracture set bisected by an extension fracture set about a maximum compressive stress axis trending southwest – northeast and plunging gently to the southwest. Migration of late-stage mineralizing fluids upwards along the footwall contact of the stock and outwards laterally along predominantly low angle vein structures formed the observed veins. Enrichment of gold was also noted in a subvertical zone paralleling the footwall contact and in sub-horizontal zones near the roof of the stock where hornfelsed non permissive cap rocks formed an effective barrier to any further upward migration of fluids.

More recently, detailed studies carried out by mining companies evaluating intrusion related gold deposits located in the Yukon and Alaska (i.e. Fort Knox and Dublin Gulch) have determined that these types of deposits occur as large systems involving multiple mineralized intrusions rather than as isolated deposits. Various authors (Pautier, Daignault and Malmberg, von Einsiedel, and Connor, 2020) have suggested the mineralized zones identified within Bear Mountain may be parts of an intrusion-related gold system (IRGS), however, no systematic evaluation of this exploration model has been carried out.

In March of 2020 BMGM retained Liam Connor, MESci (SGDS Hive) to review the available technical data and assess the Company's IRGS model. Connor concluded that the diorite intrusions and gold bearing vein systems that have been identified within Bear Mountain exhibit characteristics consistent with IRGS deposits and recommended systematic surface mapping and infill soil sampling to delineate the extent of diorite intrusions within the HLSZ. Concurrent with this program Connor also recommended detailed technical studies including petrography, trace element geochemistry and age dating to determine if the intrusions are part of a Reduced Intrusion Related Gold System (RIRGS) or an Oxidized Intrusion Related Gold System (OIRGS) or some form of hybrid gold system.

Connor, (2020) also notes that the structurally bound nature of the known diorite and quartz diorite stocks associated with the Harrison Lake Shear Zone (HLSZ) allows for the possibility of other

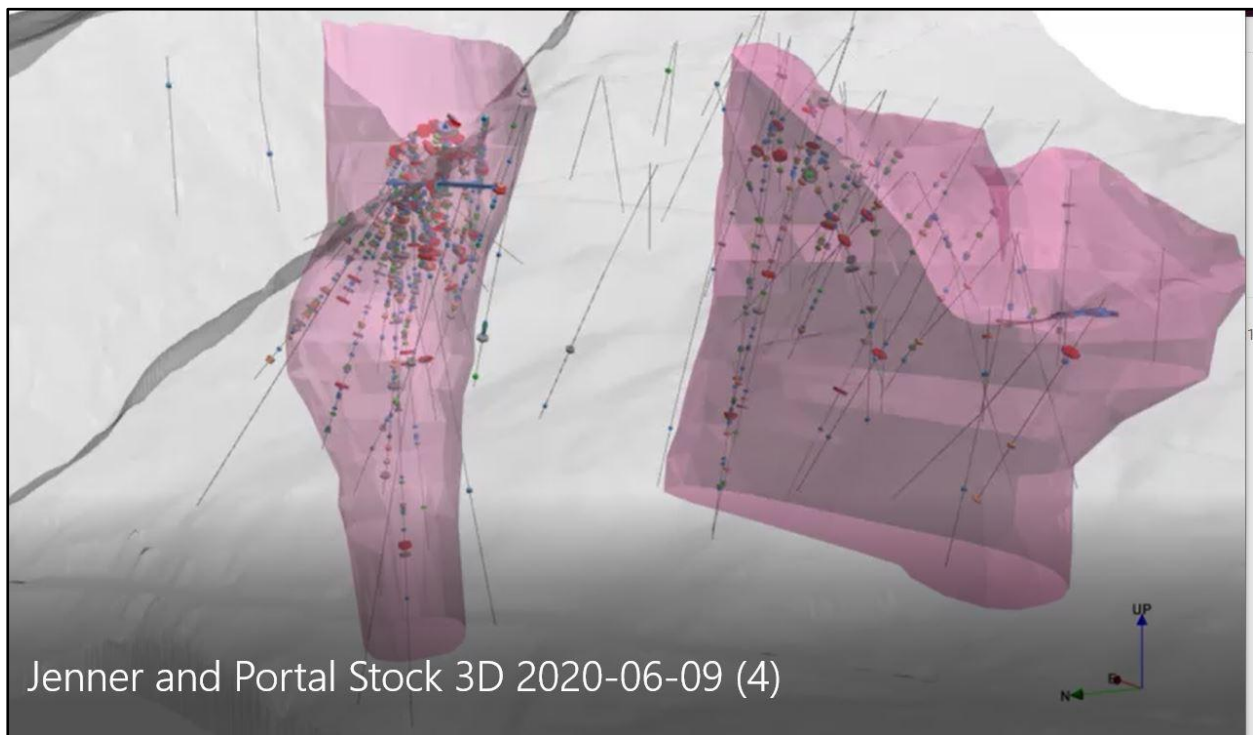
intrusions to be located on trend (NNW-SSE) and suggests potential for a belt of similar intrusions within Bear Mountain. Either IRGS model (RIRGS or OIRGS) suggests that the known quartz diorite and diorite stocks are mineralized parts of a gold system rather than individual deposits.

The historical gold mineralization that has been identified on Bear Mountain consists of sub-horizontal zones of quartz veining that have been intersected by core drilling within several widely spaced intrusions over more than 2 kilometers of strike length and over a combined vertical elevation range of more than 700 meters. Mineralization within these types of systems is generally considered to occur as sub-vertical sheeted veining that forms parallel to the principal stress (σ_1), with the minimum stress direction (σ_3) perpendicular to σ_1 . However, in a stress regime similar to that suggested for the HLSZ, a near-horizontal preferential orientation may be expected. Furthermore, work by Brown and McClelland (2000) on batholiths near Harrison Lake in the southeast Coast Plutonic Complex suggests that these plutons have been emplaced via sheeting and cyclic vertical ballooning/inflation. This style of emplacement would further allow for horizontal veining within the upper limits of the system.

The repeating sub-horizontal zones of quartz veining intersected within the Jenner Zone could be evidence of this cyclic emplacement. In terms of economic geology, this model would allow for multiple zones of auriferous horizontal veining within the diorites at various elevations.

The main explored deposit within the Harrison Gold property is the Jenner Stock zone where sub-horizontal to low angled (15° - 40°) auriferous quartz vein systems crosscut the Jenner stock (Norman, 1990a). Minor, sub-vertical vein sets are also known to be gold-bearing.

Figure 7c Schematic 3D image showing the geometry of the Jenner and Portal Intrusions based on historic drill hole geology and assay information (Not to scale)



Throughout the stock, weak to locally strong propylitic alteration is common primarily consisting of chlorite and carbonates. Auriferous veins are predominantly quartz with minor carbonates (calcite), chlorite and sericite. Strong sericitic selvages are present along auriferous quartz veins. Pyrrhotite is the major sulphide mineral phase, with trace amounts of pyrite, chalcopyrite, molybdenite, scheelite, arsenopyrite, galena and sphalerite. Notable, bismuth-silver tellurides have been recognised as intergrowths with native gold grains. Gold concentrations have not been shown to correlate with the amount or type of sulphides present, instead the highest gold concentrations are shown to be spatially associated with the contact regions, particularly the Footwall Zone of the Jenner stock. Throughout the stock, gold mineralization is also observed to be greatest where quartz vein and veinlet density is highest. Although, concentrated along the intrusion contacts and areas of high quartz vein density, visible/free gold flakes/grains and invisible gold occurs throughout the quartz diorite stock. The Jenner Stock zone contains multiple, sub-horizontal horizon/zones of high-gold mineralization.

Other structures within the Jenner Stock zone include large, low-angled, reverse faults that dip W and E and have resulted in the faulting of the country rock and quartz diorite stock as well as the shearing of the quartz veins (Barlow, 2013). A notable, post-mineralization reverse fault has been referred to as the Jenner fault. The reverse faulting and shearing within the Jenner Stock zone are commonly associated with pyrite, carbonate, and chlorite alteration assemblages (Barlow, 2013).

The Portal stock also has significant gold mineralization with deposit styles, mineral phases, textures, and structures similar to the Jenner Stock zone. The Portal stock is located 300 meters southwest from the Jenner stock. Auriferous quartz veins within the Portal stock are horizontal to sub-horizontal, with the zones of mineralization dipping 15o-20o W and 5o-20o S (Barlow, 2013).

The Lake Stock is the largest exposed mineralized stock within the HLSZ on the Harrison Gold Property. Locally, up to 3 % disseminated pyrrhotite has been recorded, with quartz veins less common than in the Portal or Jenner stocks (Barlow, 2013). The quartz veins are found primarily along the contact margin of the stock with visible gold and grades up to 2.24 g/t (Norman, 1990a).

The most southwesterly of the mineralized quartz diorite stocks are the Hill Stock and Breccia Zone. Gold and silver mineralization have been recognised alongside quartz ± carbonate-pyrrhotite-pyrite ± molybdenite ± arsenopyrite veins (Barlow, 2013). The base metal and Fe-bearing sulphide veins extend into the surrounding country rock, however, terminate after only a short distance from the contact (Barlow, 2013). Au-mineralization within the Hill stock has similar controls and nature to the Jenner and Portal zones, with gold predominantly confined to low-angle, quartz-dominant veining (Norman, 1990b).

The Breccia Zone is a hydrothermally altered (sericite-chlorite-silica), pyrrhotite-sphalerite-chalcopyrite-bearing breccia pipe located along the WNW margin of the Hill stock (Fig. 6). The breccia is composed of both brecciated coarse-grained (5-10 cm) country rock and Hill stock quartz diorite clasts. Sulphide mineralization has formed within voids in the breccia (Barlow, 2013). Historically, average grades of 1.56 g/t gold; 4.4 g/t silver; 0.56 % zinc and 0.04 % copper have been recorded (Norman, 1990b). An intersect of 7 metres averaging 3.56 g/t gold; 9.3 g/t silver; 1.2 % zinc and 0.049 % copper was identified along the margin of the breccia pipe (Norman, 1990b).

The possibility of further discoveries within other portions of the Jenner, Portal, Lake and Hill stock is highly likely due to the poorly explored subsurface of the stocks. If the structurally bound, Bear Mountain Intrusive Belt concept is further developed and more stocks trending NNW-SSE are located within the Harrison Lake Shear Zone, there is a strong argument for a Bear Mountain Gold Belt that may be considered to extend NNW-SSE from Sasquatch Provincial Park to as far south as the community of Agassiz.

8.0 DEPOSIT TYPES

8.1 Deposit Styles of Harrison Lake

There are multiple deposits of varying nature and commodities within the Harrison Lake area, particularly along or directly beside the Harrison Lake Shear Zone (HLSZ). Demczuk (1989) recognizes that the Seneca deposit (MINFILE #: 092HSW013) situated on the north side of the Chehalis River as a VMS deposit associated with the Coast Complex terrane and the HLSZ. Combined reserves at Seneca are 1,506,239 tonnes grading 3.57 % zinc, 0.15 % lead, 0.63 % copper, 0.82 g/t gold and 41.13 g/t silver (Desautels, 2008).

Furthermore, the Doctors Point deposit (MINFILE #: 092HNW071) is a significant gold occurrence located 40 km north of Harrison Hot Springs. Over 90 drill holes have proven up to 250,000 tons of open pit minable material grading 3.125 g/t gold and 62.5 g/t silver. The deposit consists of flat-lying quartz-arsenopyrite veins in hornfelsed volcanics adjacent to a granodiorite stock (Demczuk, 1989). The composition of the exposed Tertiary (dated at 22-24 Ma) (Barlow, 2014), diorite known as the Doctors Point pluton and four smaller diorites to quartz diorite stocks associated with the Doctors Point deposit are unmistakably similar to the Jenner, Portal, Hill, Lake, Bear, and Bluff stocks located on the Harrison Gold property. Furthermore, gold mineralization within the Doctors point pluton is described as occurring within gently dipping (sub-horizontal), vuggy quartz-sulphide veins with minor K-feldspar, sericite, and carbonate (Barlow, 2014).

8.2 Past Deposit Models of the Harrison Gold Project

The historical work completed on the Property has been mostly absent of a proposed deposit model for gold mineralization associated with the multiple felsic stocks. It has been long recognised the intimate relationship between the intrusive stocks and mineralization both spatially (e.g. Allen and Allen, 1983; Kahlert, 1989), as well as temporally (Richards and White, 1970; Sawyer, 1984).

In 1989 Bema proposed an exploration model (Norman, 1989) for the mineralization identified within the Jenner zone that involved formation of predominantly low angle vein system(s) whose materials (gold bearing fluids) were derived from the waning phases of intrusive activity. Veins formed in a conjugate shear fracture set bisected by an extension fracture set about a maximum compressive stress axis trending southwest – northeast and plunging gently to the southwest. Migration of late-stage mineralizing fluids upwards along the footwall contact of the stock and outwards laterally along predominantly low angle vein structures formed the observed veins. Enrichment of gold was also noted in a subvertical zone paralleling the footwall contact and in sub-horizontal zones near the roof of the stock where hornfelsed non permissive cap rocks formed an effective barrier to any further upward migration of fluids.

Pautier (2004), was the first to suggest the potential of an intrusion-related gold system (IRGS) model and compared the gold mineralization within the Harrison Gold property to that of IRGS deposits within the Tintina Gold Province in Alaska and Yukon. The evidence and idea behind the IRGS concept are discussed further below. Pautier (2004), also suggested stock emplacement and mineralization coincide with fault splays from the Harrison Lake Shear Zone, and the hydrothermal breccia along the northwestern contact of the Hill stock related to one of the north-trending splays that cuts through the Portal stock.

Since 2004, the IRGS classification has been hypothesized as the primary model for gold mineralization on the Harrison Gold property, however, misinterpretation of the types of IRGS models has occurred with certain workers referring to a reduced-style of intrusion related deposit (Pautier, 2004) and others referencing a more oxidized system closer to Alldrick's (1996)

intrusion-related (mesothermal) vein-type gold deposit model (Von Einsiedel, 2013; 2014; 2016; 2017; 2018).

8.3 Current discussion on the Deposit Model of the Harrison Gold Project

Gold deposits have been long considered to have a spatial and temporal association with felsic intrusions; however, geological literature was devoid of a true intrusion-related deposit model until the late 1990s (Hart, 2005). Previous models regarded gold-rich deposits that formed primarily from intrusion-related mechanisms as gold-only porphyry systems (Hart, 2005). Studies by Sillitoe (1991); Sillitoe and Thompson (1998); Thompson et al. (1999) differentiated how these intrusion-related systems differ in magma chemistry and oxidation state from traditional porphyry systems.

Intrusion-related gold systems can be separated into reduced intrusion-related gold systems (RIRGS) and oxidized intrusion-related gold systems (OIRGS) (Robert et al., 2007). Although OIRGS models are varied, most represent what is traditionally considered a porphyry Cu-Au system or some stage of a porphyry system (Robert et al., 2007). OIRGS are known to form within continental and oceanic collisional settings and are components of large hydrothermal systems centered on high-level, generally oxidized, intermediate to felsic porphyry stocks (Robert et al., 2007).

The 1999 RIRGS model emphasized intrusion-related gold mineralisation in regions void of copper, rich in W and Sn, and noted elevated occurrences of Bi-Te-As-Mo-Sb (Thompson et al. 1999). Deposits are spatially linked to S-type, reduced granitoid intrusions. To summarise the classification of RIRGS, Hart (2004) compiled a list of 8 criteria, that when used together as a suite of observations are indicative of a RIRGS. The criteria are as follows:

- (1) Plutons and plutonic suites inboard of the continental margin.
- (2) Regional metallogeny recognised as tungsten or uncommonly tin.
- (3) Source intrusions are small, metaluminous to slightly peraluminous, intermediate to felsic granitoids.
- (4) Commonly, the plutons belong to the ilmenite-series as classified by Ishihara (1977), suggesting a predominantly reduced oxidation state. Redox variations may occur locally.
- (5) Wide range in the style of mineralisation including sheeted veining, skarn, dissemination, replacements and hydrothermal breccias.
- (6) Low-total sulphide contents associated with mineralisation with limited hydrothermal alteration due to low fluid volumes.
- (7) Gold-dominated metal assemblages with elevated Bi, W, As, Te and/or Sb. with typically non-economic base-metal concentrations.
- (8) Carbonic hydrothermal fluids are the most dominate within the fluid system.

The RIRGS model was developed from observations, exploration, discoveries, and research on gold systems across central Alaska, USA and the Yukon Territories, Canada (Hart 2005). These systems were a part of the Tintina Gold Province, which included well researched deposits such as Fort Knox, Alaska (Bakke 1995) and Dublin Gluch, Yukon (Maloof et al. 2001). Along with the 2-D plan model of RIRGS developed by Hart et al. (2002) (Fig. 7a in ARIS Report No 39204) and schematic cross-sections by Lang et al., (2000) from as shown in Hart's (2002) report (Fig. 7b in ARIS Report No 39204) has helped constrain the RIRGS model (e.g. Rombach and Newberry 2001; Mair et al. 2006). District-scale exploration models have also benefited the RIRGS classification around the world (Graham-Ruzicka 2015) with models now being applied to deposits across Europe and Asia (e.g. Fornadel et al. 2011; Vikent'eva et al. 2018).

Reduced intrusion-related gold systems are generally not recognised to occur within British Columbia, rather they are confined to the Tintina Gold Province. However, Alldrick (1996),

recognises that oxidized intrusion-related gold systems do occur within British Columbia and they have an almost identical nature to those described by Robert et al. (2007). Alldrick (1996) considers the Scottie Gold (MINFILE #: 104B034); Snip (MINFILE #: 104B250); Johnny Mountain (MINFILE #: 104B107); War Eagle (MINFILE #: 082FSW097); Le Roi (MINFILE #: 082FSW093), and Centre Star (MINFILE #: 082FSW094) all examples of British Columbian mesothermal intrusion-related gold deposits that formed within the transitional phase between subvolcanic porphyry copper systems and subvolcanic epithermal systems.

When considering the Harrison Gold property, multiple observations made of the mineralization, geology, and structures align with those typical of intrusion-related gold systems. The deposit styles of the Harrison Gold property primarily consist of low-angle, auriferous quartz-carbonate veins near the margins of the Jenner, Portal, Hill and to a lesser extent the Lake stocks. Other gold mineralization includes minor quartz-diorite hosted sub-vertical quartz veins. The compositions of the, Miocene-aged, generally equigranular quartz diorite to diorite stocks is typical of both RIRGS and OIRGS. The sulphide phases present (Pyrrhotite ± pyrite-molybdenite-arsenopyrite-galena-sphalerite) are generally consistent with both RIRGS and OIRGS, while the copper-rich phases (chalcopyrite and malachite) may be more consistent with an OIRGS. However, the intrusions of the Chilliwack Suite of Plutons are Oligocene to Miocene in age and formed post-accretionary, during a tectonic setting favourable for RIRGS formation. Furthermore, the dominance of pyrrhotite, a reduced iron sulphide phase is also indicative of a reduced magma and thus ideal for a RIRGS.

In summary, it is not currently possible to determine if the Au mineralization within the Harrison Gold property is typical of a RIRGS or OIRGS or potentially a transitional/hybrid system. Further study, with a particular focus on REDOX conditions and alteration phases is required to refine the nature of the deposits. It is possible however to suggest the mineralization within the property is of intrusion-related origin. It can therefore be speculated that the exposed intrusions may be a part of an NNW-SSE trending belt of intrusives that have formed along the Harrison Lake Shear Zone during post-collisional/accretionary magmatism.

9.0 EXPLORATION

TTG (“the Issuer”) has not carried out any exploration work on the Property.

9.1 Exploration Work Carried Out by BMGM (the “VENDOR”)

In 2010, Omineca compiled available technical data for the Property (Price 2010) and reported that previous mining companies spent more than seven million dollars exploring the northern part of Bear Mountain after local prospectors discovered and mined a high-grade quartz vein during the late 1970’s (referred to in literature as the RN Mine).

In 2011, BMGM’s parent company Sierra Madre Development Corp. (TSX:V SMG) (“Sierra”) reviewed the Price report and the historic exploration data and staked the southern part of Bear Mountain. During October of 2011 Sierra negotiated an option agreement with Omineca whereby Sierra acquired the right to earn a 100% interest to the claims covering the northern part of Bear Mountain subject to certain cash payments, share issuances, royalties and completing \$2,000,000 in exploration expenditures. In 2018 Sierra spun out BMGM to shareholders as a private BC corporation. In a technical report submitted to the Ministry of Mines on November 10, 2025, Von Einsiedel confirmed that BMGM has met the expenditure requirements set out in the Omineca agreement and summarized the exploration work and technical studies that were completed by Sierra and BMGM up to the March 31, 2024 completion deadline.

Preliminary exploration work during the 1980’s showed elevated concentrations of gold in the soils surrounding the RN mine and various other intrusions in the northern and central parts of

Bear Mountain. Several phases of follow up core drilling identified widespread, sub-horizontal quartz veins associated with finger like diorite intrusions (100 to 500 meters in diameter).

BMGM's soil sampling and compilation studies between 2012 and 2017 added 2,282 samples to the project database which now includes 5,559 soil samples. The soil sample results added by BMGM confirmed that there are multiple untested "gold in soil" anomalies in the northern and central parts of Bear Mountain and identified several additional "gold in soil" anomalies in the southern parts of Bear Mountain. Although only 50% of the southern part of Bear Mountain has been covered by soil surveys the anomalies that have been identified exhibit gold values comparable to the historic survey results reported in the central and northern parts of the Property. The presence of multiple, untested "gold in soil" anomalies along the HLSZ combined with historic reports (Cooke, 1992) of a diorite intrusion located near the south end of Bear Mountain along the projected extension of the HLSZ suggests potential for the discovery of additional mineralized intrusions over a strike length of more than six kilometers from Sasquatch Park to the south end of Bear Mountain.

In September of 2020 BMGM entered into an option and joint venture agreement with Bayhorse Silver. Access roads were improved, and a program of drill hole surveying and LiDAR mapping was completed however, the option agreement was terminated in January of 2021.

In 2021 BMGM completed a drill program consisting of 8 shallow drill holes within the Portal Zone. The details of this drilling program are included in Item 10.0 of this report. Refer to Section 10 for details. Table 10.1 lists the drilling completed by BMGM ("the Vendor") in 2021.

During 2021 BMGM also completed preliminary ore sorting test work and underground geotechnical studies. Details are summarized in Aris Report No. 40021. Between September 2022 and March 2024 BMGM completed underground rehabilitation work, underground sampling and additional ore sorting test work. Details are summarized in Aris Report No. 43030. The results of the underground sampling and surface drilling confirmed the presence of gold in the quartz vein material encountered in the Jenner and Portal Zones. The ore sorting test work completed between 2021 and 2024 demonstrated that "laser sorting technology" is capable of separating fragments of diorite (up to 4 inch in diameter) that contain even a small percentage of quartz vein material from diorite fragments that do not contain any quartz vein material. The results of the ore sorting test work carried out between 2021 and 2024 were encouraging and justify additional larger scale test work.

To provide an overview of the exploration work that was completed by BMGM and expenditures incurred by BMGM, the Company provided a table listing each of the assessment work reports, the work completed and the costs that were reported to the Ministry of Mines for each assessment filing. The listing of assessment work filings that was prepared by BMGM is provided in Table 9.1.

It is also interesting to note that the widespread occurrence of metallic gold grains reported in the historic drill logs and the results of limited metallic gold assays completed by BMGM on material collected from the existing underground workings and a drilling program completed in 2021 suggest that the conventional fire assay method utilized by previous operators may have under reported the actual average grade of the known mineralized zones. Although extensive sampling will be required to establish the actual grade of the known mineralized zones, the batches of metallic gold test work completed by BMGM consistently showed an average grade increase ranging from 40 to 50% higher than the conventional fire assay technique that was used for all of the historical rock and drill core assaying. The recent introduction of Photon Assay equipment at several Canadian laboratories will significantly lower the costs and increase the accuracy of drill core and mine sample assay reporting.

Figure 9a: Soil Sampling

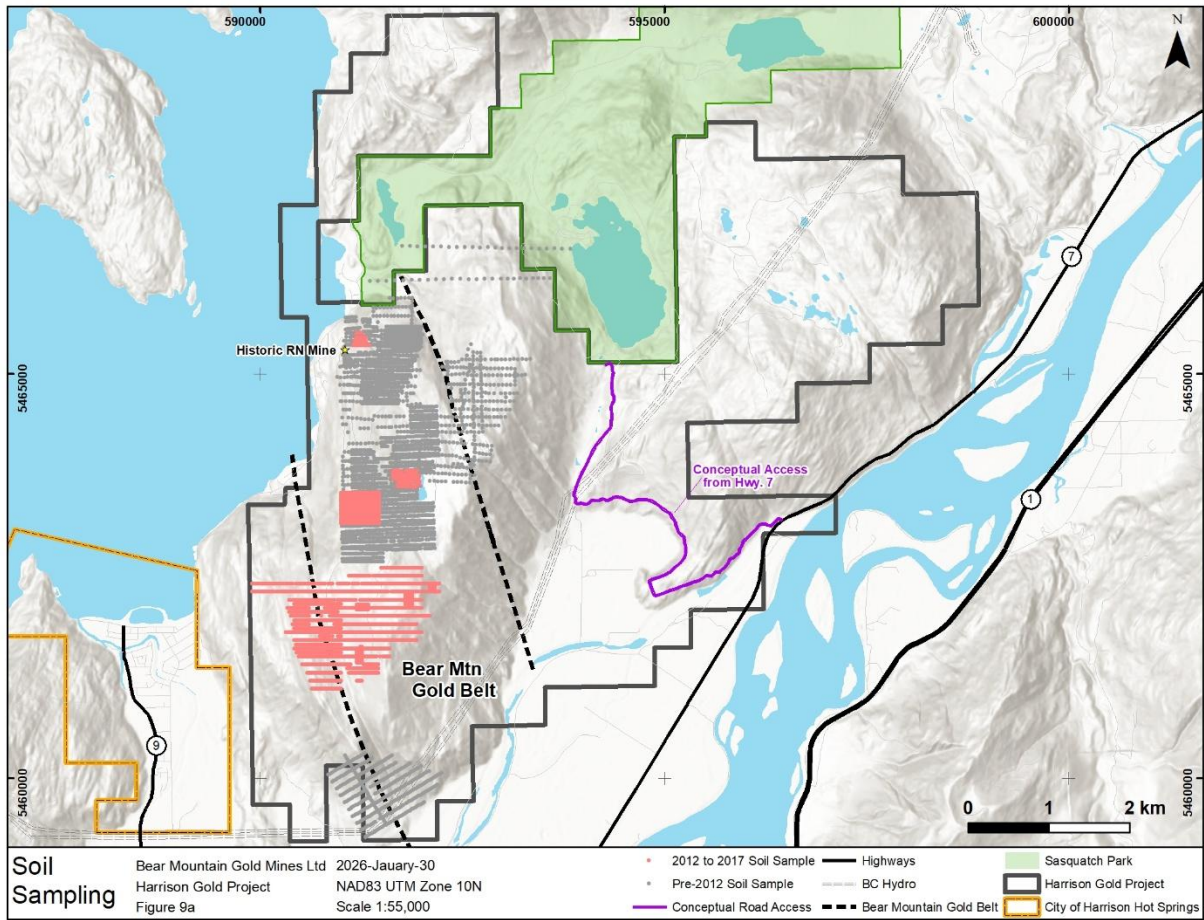


Table 9.1: List of BMGM Exploration Expenditures from November 2011 to March 2024

Report Information			Work Done				Money Spent
ARIS No	Working Years	Corporation	Surface	Underground	Drilling	Mine Infrastructure	Total Expenditure Amount in Report
33914	2011 - 2012 - 2013	Sierra Madre	958 Soil Samples South of Historical Grids and 118 Soil Samples Near Jenner. Compilation of Historical			Rehabilitation of the Jenner 187 Level Drift	\$ 270,813.59
Not Applied for Work	2013-2014	Sierra Madre	ALS Global Invoices for soil analyses, 756 Soil Samples with 1044 assay analysis. Preparation of 2012 assessment report. LiDAR			Bear Mountain FSR User Agreement, Lot 6510 Rockwell Drive geotechnical report, Lot 7340 Rockwell Drive land survey and	\$ 287,500.00
34993	2014-2015	Sierra Madre				Prelim Evaluation of Tailing Storage	\$ 11,595.00
36010	2015	Sierra Madre		100kg Qtz Vn Material in Underground for Prelim Gravity Test. 5 Samples Qtz Vn Expouse North of Sasquatch Park			\$ 12,778.63
36570	2016	Sierra Madre		300kg Vein Material from RN, metallurgical work. Met Solve Labs			\$ 18,638.63
37366	2017	Sierra Madre	418 Soil Samples. Road, trail rehab				\$ 109,764.00
						Total Expenditures 2012 - 2017	\$ 711,089.85
39014	2018-2019	Bear Mountain Gold Mines	LiDAR Survey purchased from McElhanney. Conceptul Road Access East Property, Terrain Stability Study	Mine Water Testing		3D Underground Development Work 3D Model of Drift	\$ 150,053.20
39204	2020	Bear Mountain Gold Mines	Compilation of avalaible geological information and site visit. Rock Chip Samples				\$ 4,485.00
40021	2021-2022	Bear Mountain Gold Mines	McElhanney Engineering Road Studies. Storm Infrastructure repair, roads and culverts	Stienert Laser Sorting Study	460m of Drilling in 8 Holes (Surface)	Repair of Jenner 187 Level Portal and core storage area	\$ 555,520.00
43030 (off confidential 2026/07/28)	Sept 1, 2022 to March 31, 2024	Bear Mountain Gold Mines	McElhanney Engineering Road Studies. Road culvert installation	ABH Engineering Laser Sorting	Jenner Zone Verification Drillhole Design, Portal Zone Verification Drillhole Design	JDS Mining Study	
			Fuse Advisors Jenner - Portal Study	TOMRA Laser sorting testing	Proposed Raise Bulk Sampling Program	Jenner 187 Level Rehab, Screening and Bolting	
			Conceptual Aggregate Quarry Study	SGDS-Hive GIS Consultants.		PHC Geotech	\$ 580,000.00
						Total Expenditures 2018 - Mar 31, 2024	\$ 1,290,058.20
						TOTAL	\$ 2,001,148.05

Figure 9b: Soil Geochemistry & Sample Locations

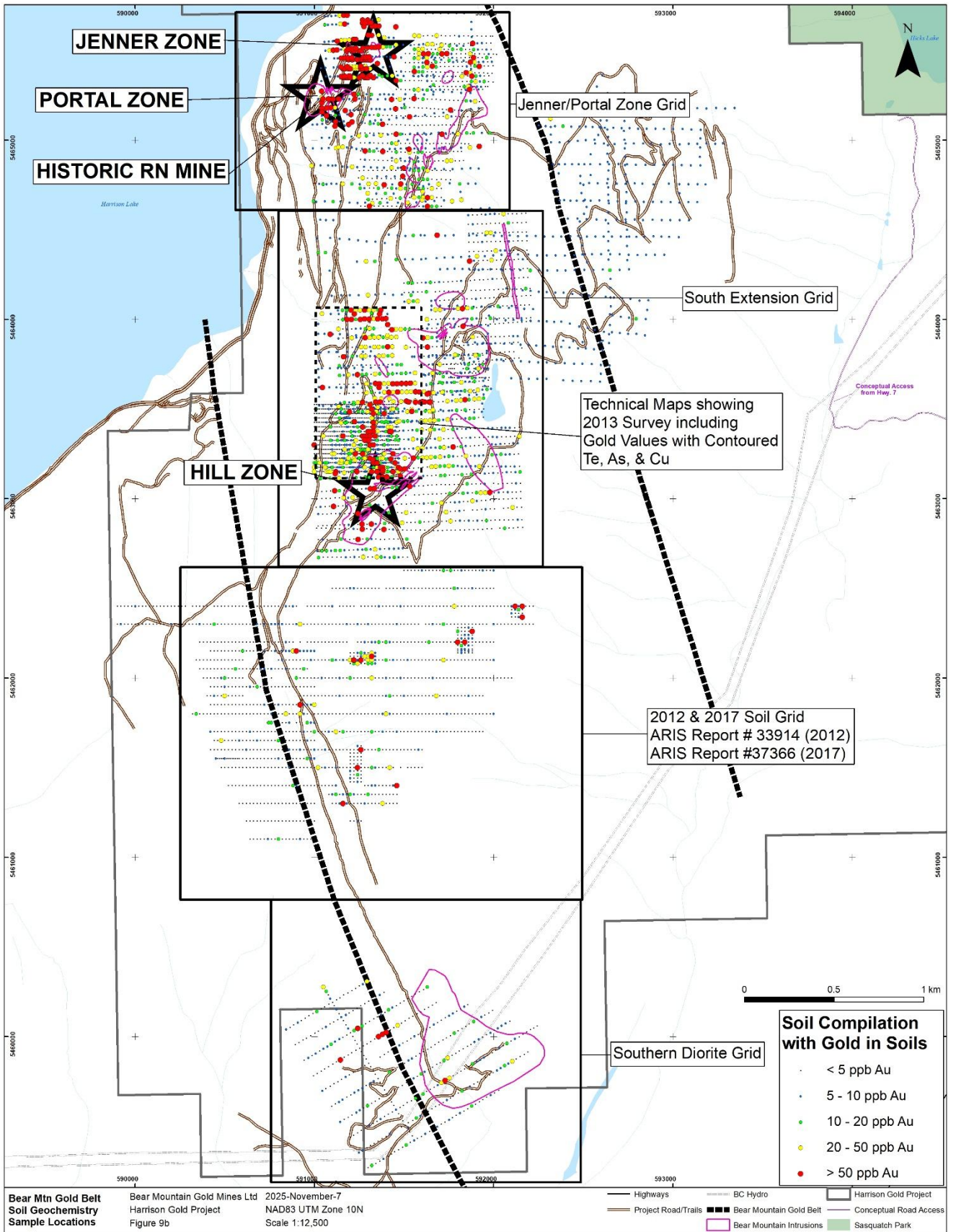
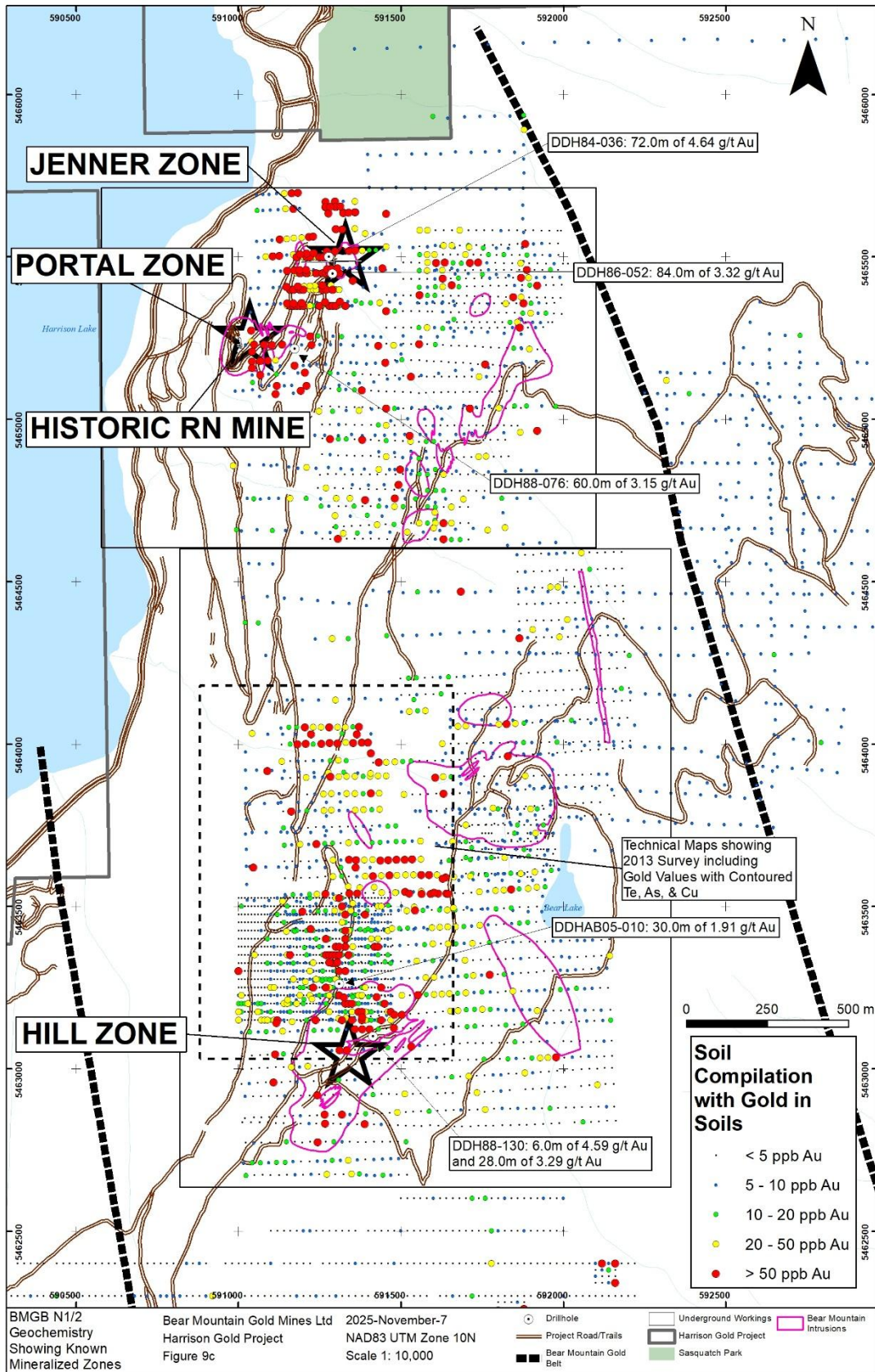


Figure 9c: North Half Geochemistry Showing Known Mineralized Zones



9.2 Comparison Between Standard Fire Assay and Metallic Gold Assay

It is important to note that Norman (1989), reported that assay studies comparing the data from underground muck sampling and drill assay data suggest that there could be a significant upgrading factor (as much as 50%). It is possible that this discrepancy is related to the fact that conventional one assay ton fire assay techniques only analyze the material that passes through 100 mesh screens and does not measure the contribution of larger gold grains.

To determine whether or not the standard one assay ton fire assay technique utilized by previous operators may have under reported the contribution of coarse gold in historic sampling programs BMGM submitted a total 31 samples in four separate programs for comparative metallic gold analysis. Samples analyzed by this technique are analyzed for gold by standard one assay ton fire assay techniques and the material remaining on the screens is also analyzed. Refer to tables 9.2 to 9.5 below.

The results of the 31 analyses provide a comparison between standard fire assay result and the metallic gold assay result. As shown in the Table 9.2 to 9.5, 21 out of 31 samples show a 20% or more increase in gold grade and the average percentage difference is 147.42%. The recent introduction of Photon Assay equipment at several Canadian laboratories may provide a more reliable option which could significantly lower the costs and increase the accuracy of drill core and mine sample assay reporting.

The recent introduction of Photon Assay equipment at several Canadian laboratories will significantly increase the accuracy of drill core and mine sample assay reporting.

Table 9.2: Table Showing 2021 Drill Core – reference ARIS Report No.40021

Hole ID	Sample No	Au Total (+) (-)	Au- AA25	Au- AA25D	Au-AA Average	Difference
		Au ppm	Au ppm	Au ppm	Au ppm	%
DDH 21-08	440719	2.68	2.12	2.25	2.185	122.654
DDH 21-08	440721	1.41	1.13	0.77	0.95	148.421
DDH 21-07	440727	3.34	2.94	2.82	2.88	115.972
DDH 21-07	440728	1.28	1.27	1.27	1.27	100.787
DDH 21-07	440729	1.05	0.85	1.03	0.94	111.702
DDH 21-07	440730	0.81	0.51	0.44	0.475	170.526
DDH 21-07	440732	1.51	1.25	1.3	1.275	118.431
DDH 21-07	440733	5.35	3.76	3.65	3.705	144.399
DDH 21-08	440737	1.86	0.56	0.79	0.675	275.556
DDH 21-08	440742	5.37	2.6	2.28	2.44	220.082
DDH 21-07	440744	1.79	1.92	1.64	1.78	100.562
DDH 21-07	440745	3.97	3.62	3.83	3.725	106.577
DDH 21-07	440746	0.64	0.47	0.63	0.55	116.364
DDH 21-06	440747	1.31	0.8	0.95	0.875	149.714

DDH 21-02	DDH 2021-02-002	18.75	16.85	17.45	17.15	109.329
DDH 21-02	DDH 2021-02-003	8.51	7.74	8.37	8.055	105.649
DDH 21-02	DDH 2021-02-007	1.09	0.26	0.44	0.35	311.429

Table 9.3: MetSolve Gravity Recoverable Gold Study reference - ARIS Report No. 36010

Sample No	Au Total (+) (-)	Au-AA25	Au-AA25D	Au-AA Average	Difference
	Au ppm	Au ppm	Au ppm	Au ppm	%
AB01	9.72	6.54	5.06	5.8	167.59
AB02	10.95	6.28	6.73	6.505	168.33
AB03	110.5	83.3	89.7	86.5	127.75
AB04	97.1	77	80.6	78.8	123.22
AB05	29.7	19.5	19.1	19.3	153.89

Table 9.4: ABH Engineering – Preliminary Laser Sorting Test work reference ARIS Report No.43030

Sample No	Au Total (+) (-)	Au-AA25	Au-AA25D	Au-AA Average	Difference
#1 – MG	25.1	17	17.05	17.025	147.43
#2 – HG	51.6	36	35.2	35.6	144.94
#3 – LG	2.2	1.39	1.75	1.57	140.13

Table 9.5: Steinert Ore Sorting Test work - reference ARIS Report No.40021

Sample No	Au Total (+) (-)	Au-AA25	Au-AA25D	Au-AA Average	Difference
	Au ppm	Au ppm	Au ppm	Au ppm	%
SAMPLE 2-1	55.4	46.5	47.3	46.9	118.124
SAMPLE 2-2	70.1	56.4	57.8	57.1	122.767
SAMPLE 3-1	25.6	19.25	19.15	19.2	133.333
SAMPLE 3-2	22.4	13.85	12.55	13.2	169.697
SAMPLE 4-1	1.31	1.24	0.7	0.97	135.052
SAMPLE 4-2	1.09	0.74	0.41	0.575	189.565

10.0 DRILLING

10.1 BMGM (“Vendor”) Drilling

TTG (“the Issuer”) has not carried out any drilling or exploration work on the Property.

In 2021 Bear Mountain Gold Mines mobilized a Boyles Model 25 conventional drill rig and completed a diamond drilling program consisting of 457.61 meters of NQ size core in 8 shallow drill holes. Details of the 2021 drill program are summarized in Aris Report No. 40021. Figure 10 shows the location of the 2021 drill holes.

The 2021 drilling program consisted of a series of shallow, inclined holes designed to intersect gold bearing quartz vein mineralization reported in historic drill holes and provide mineralized drill core material for a planned ore sorting test at the Steinert Ore Sorting Test Facility located in Kentucky. A total of 41 samples (approx. 1.0 meters in length) were sawn using a core saw and submitted to the ALS Canada lab in N. Vancouver for comparative fire assay and metallic gold assay and for MEMS61 multi-element analysis.

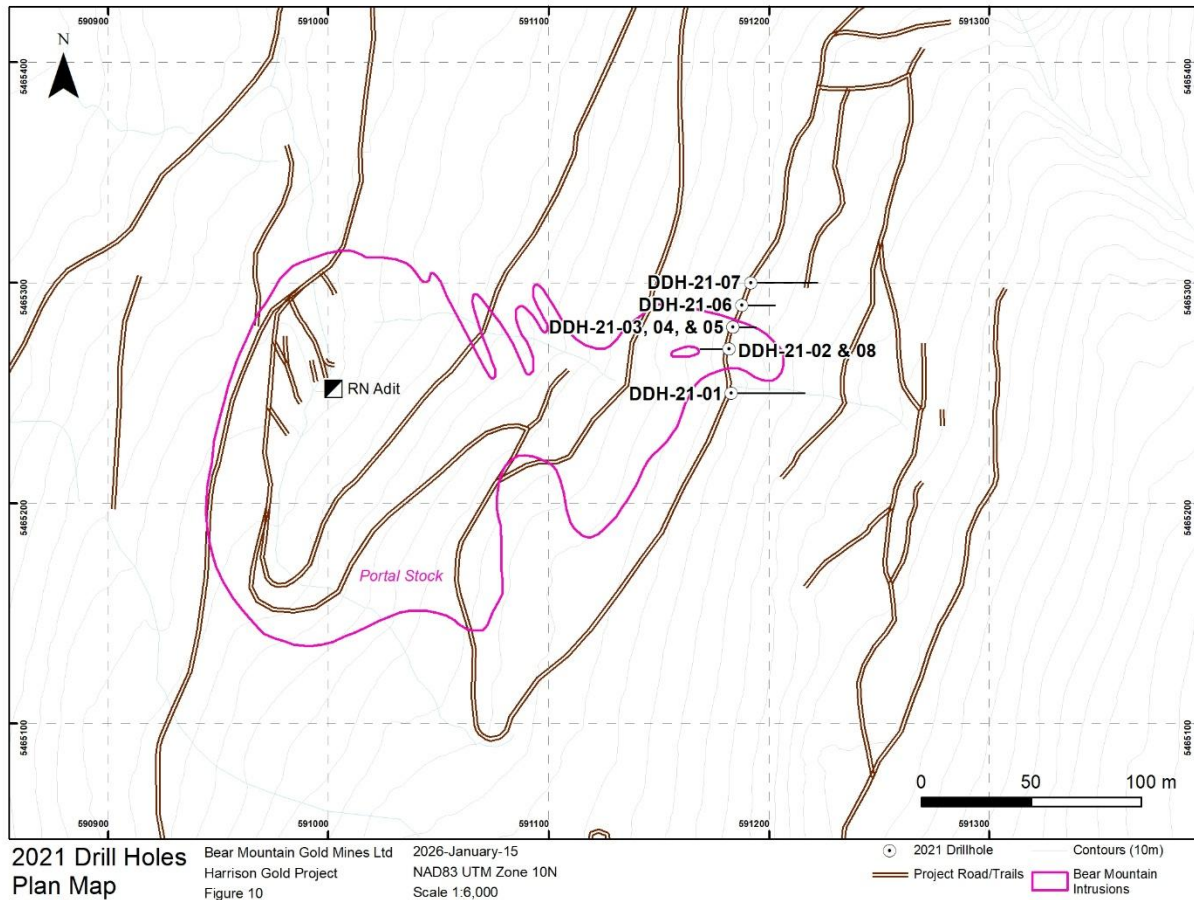
The 2021 assay intervals are listed in Table 10.2. The 19 mineralized intervals that were assayed by comparative metallic gold assay methods are listed in Table 12.1. No additional blanks or standards were inserted into the drill core analysis at ALS Global.

In addition to the core samples that were submitted to ALS Global for analysis approximately 25kg (5 meters of core) of crushed whole core containing quartz vein mineralization was shipped to the Steinert facility. To provide additional sample material for the ore sorting test work BMGM provided the Steinert facility with approximately 25 kg of crushed diorite material containing approximately 5% quartz vein material from the Jenner workings, approximately 25 kg of crushed quartz vein material from the quartz vein developed in the Portal Zone underground workings and approximately 25 kg of crushed, barren looking diorite material collected from the Jenner and Portal Zone underground workings. A representative 1 kg split of the two crushed drill core sample, the two crushed samples from the Jenner workings and the two crushed samples from the Portal Zone workings was submitted to the ALS Global facility in N. Vancouver for comparative fire assay and metallic gold analysis.

Table 10.1 List of Drill Holes Completed by BMGM in 2021.

Hole ID	Depth m	UTM E NAD83 Z10	UTM N NAD83 Z10	Elevation m	Azimuth	Dip
DDH-21-01	50.39	591183.00	5465250.00	245.36	90	-49
DDH-21-02	130.15	591182.00	5465270.00	245.47	0	-90
DDH-21-03	20.42	591184.00	5465280.00	245.27	90	-90
DDH-21-04	20.12	591184.00	5465280.00	245.27	90	-60
DDH-21-05	11.58	591184.00	5465280.00	245.27	90	-75
DDH-21-06	56.7	591188.00	5465290.00	245.34	90	-75
DDH-21-07	59.74	591192.00	5465300.00	244.67	90	-60
DDH-21-08	108.51	591182.00	5465270.00	245.47	270	-83

Figure 10: 2021 Drill Holes Plan Map



The results of the surface drilling carried out in 2021 confirmed the presence of gold in the quartz vein material encountered in the Portal Zone. Drill core logs documenting the intervals of diorite and the occurrence of quartz veins were documented as part of the drill programs. The orientation of mineralization is unknown. Details are summarized in Aris Report No. 40021.

A total of 41 samples (approx. 1.0 meters in length) were sawn using a core saw and submitted to the ALS Canada lab in N. Vancouver for comparative fire assay and metallic gold assay and for MEMS61 multi-element analysis. The intervals assayed are listed in Table 9.2 in Section 9.

No additional blanks or standards were submitted with drill core samples. There was no drilling, sampling or recovery factors that materially impacted the accuracy and reliability of the results.

All of the mineralized drill intercepts consist of diorite containing a small percentage of narrow (0.5 to 10 cm) quartz veins (comprising less than 2% by volume of the drill core). The best intervals reported were 13.66 g/t Au over 2.0m in DDH-21-02, 3.97 g/t Au over 1.12m and 1.60 g/t Au over 7.70m in DDH-21-07

ALS Global North Vancouver (located at 1988 Hartley Ave) is an SCC-accredited laboratory (File #15722) specializing in mineral analysis, holding ISO/IEC 17025:2017 certification. This facility provides comprehensive geochemical services, including fire assay and multi-element analysis, maintaining high standards for precision and quality control. The authors of this report are independent of ALS Global.

Table 10.2: 2021 BMGM Drill Hole Gold Assays

HOLE ID	FROM M	TO M	INTERVAL	LAB TAG	CERT	AU PPB BEST	AU_SCR_TOT_GT	AU_FA_PPM
DDH-21-01	32.72	33.9	1.18	440723	VA21202677	25.00	0.025	0.005
DDH-21-01	33.9	34.94	1.04	440724	VA21202677	25.00	0.025	0.005
DDH-21-01	34.94	35.91	0.97	440725	VA21202677	25.00	0.025	0.02
DDH-21-01	35.91	37.03	1.12	440726	VA21202677	100.00	0.1	0.1
DDH-21-02	79.85	81.19	1.34	DDH 2021-02-001	VA21202677	25.00	0.025	0.03
DDH-21-02	81.19	82.19	1.00	DDH 2021-02-002	VA21202677	18750.00	18.75	17.15
DDH-21-02	82.19	83.18	0.99	DDH 2021-02-003	VA21202677	8510.00	8.51	8.055
DDH-21-02	83.18	84.25	1.07	DDH 2021-02-004	VA21202677	25.00	0.025	0.02
DDH-21-02	84.25	85.25	1.00	DDH 2021-02-005	VA21202677	50.00	0.05	0.04
DDH-21-02	85.25	86.43	1.18	DDH 2021-02-006	VA21202677	25.00	0.025	0.01
DDH-21-02	91.35	92.94	1.59	DDH 2021-02-007	VA21202677	1090.00	1.09	0.35
DDH-21-02	92.94	94.34	1.40	DDH 2021-02-008	VA21202677	50.00	0.05	0.03
DDH-21-06	44.96	46.84	1.88	440747	VA21202677	1310.00	1.31	0.875
DDH-21-06	46.84	48.5	1.66	440748	VA21202677	100.00	0.1	0.1
DDH-21-06	48.5	49.5	1.00	440749	VA21202677	25.00	0.025	0.015
DDH-21-06	49.5	50.3	0.80	440750	VA21202677	60.00	0.06	0.065
DDH-21-07	20.71	21.78	1.07	440744	VA21202677	1790.00	1.79	1.78
DDH-21-07	30.22	31.34	1.12	440745	VA21202677	3970.00	3.97	3.725
DDH-21-07	34.69	35.65	0.96	440746	VA21202677	640.00	0.64	0.55
DDH-21-07	49.57	50.6	1.03	440727	VA21202677	3340.00	3.34	2.88
DDH-21-07	50.6	51.75	1.15	440728	VA21202677	1280.00	1.28	1.27
DDH-21-07	51.75	52.83	1.08	440729	VA21202677	1050.00	1.05	0.94
DDH-21-07	52.83	53.84	1.01	440730	VA21202677	810.00	0.81	0.475
DDH-21-07	53.84	55.26	1.42	440731	VA21202677	190.00	0.19	0.17
DDH-21-07	55.26	56.7	1.44	440732	VA21202677	1510.00	1.51	1.275
DDH-21-07	56.7	57.26	0.56	440733	VA21202677	5350.00	5.35	3.705
DDH-21-08	70.64	71.85	1.21	440717	VA21202677	25.00	0.025	0.02
DDH-21-08	71.85	72.84	0.99	440718	VA21202677	25.00	0.025	0.005
DDH-21-08	72.84	73.91	1.07	440719	VA21202677	2680.00	2.68	2.185
DDH-21-08	73.91	74.98	1.07	440720	VA21202677	25.00	0.025	0.015
DDH-21-08	74.98	75.95	0.97	440721	VA21202677	1410.00	1.41	0.95
DDH-21-08	75.95	77.11	1.16	440722	VA21202677	60.00	0.06	0.045
DDH-21-08	77.11	78.14	1.03	440734	VA21202677	25.00	0.025	0.01
DDH-21-08	78.14	79.24	1.10	440735	VA21202677	25.00	0.025	0.01
DDH-21-08	79.24	80.3	1.06	440736	VA21202677	25.00	0.025	0.01
DDH-21-08	80.3	81.32	1.02	440737	VA21202677	1860.00	1.86	0.675
DDH-21-08	81.32	82.4	1.08	440738	VA21202677	25.00	0.025	0.01
DDH-21-08	82.4	83.5	1.10	440739	VA21202677	360.00	0.36	0.195
DDH-21-08	83.5	84.52	1.02	440740	VA21202677	25.00	0.025	0.01
DDH-21-08	84.52	85.6	1.08	440741	VA21202677	25.00	0.025	0.01
DDH-21-08	85.6	86.67	1.07	440742	VA21202677	5370.00	5.37	2.44
DDH-21-08	86.67	87.64	0.97	440743	VA21202677	25.00	0.025	0.01

11.0 SAMPLE PREPARATION, ANALYSES, AND SECURITY

TTG (“the Issuer”) has not carried out any sampling or exploration work on the Property and does not have any relationship with the lab at ALS Global.

11.1 Summary of BMGM Drilling Rock Sampling and Soil Sampling

The authors are not aware of the procedures used by BMGM for collecting soil samples. Rock sampling was primarily carried out in the existing underground workings where the sample material was broken from the drift walls. Samples were packaged in plastic sample bags and shipped to ALS Global in North Vancouver B.C. for analysis

For the 2021 drilling program, the majority of the samples were taken over one-meter intervals with some shorter intervals based on geological or mineralogical parameters. Core samples were cut using a diamond saw and packaged in plastic sample bags and shipped to ALS Global in North Vancouver B.C. for analysis.

In the authors opinion, the sample preparation security and analytical procedures are consistent with industry standard practices. For the proposed drill program, the author’s recommend including certified standards and blanks with each sample shipment.

11.2 Multi Element ICP Analysis (ALS Global)

For ICP (Induction-Coupled Plasma) analyses, A 0.5-gram sample is digested with 3ml of a 3:1:2 (HCl: HN03:H20) which contains beryllium which acts as an internal standard for 90 minutes in a water bath at 95°C. The sample is then diluted to 10ml with water. The sample is analysed on a Jarrell Ash ICP unit. Results are collated by computer and are printed along with accompanying quality control data (repeats and standards). Results are printed on a laser printer and are faxed and/or mailed to the client.

11.3 Metallic Gold Assay (ALS Global)

Samples are catalogued and dried. Rock samples are two stages crushed to minus 10 mesh, then split to achieve a 250-gram (approximate) sub sample. The sample is pulverized to 95% - 140 mesh. The sample is weighed, then rolled and homogenized and screened at 140 mesh.

The –140 mesh fraction is homogenized and extracted by cyanide leach. 2 samples are fire assayed for Au. The +140-mesh material is assayed entirely. The resultant fire assay bead is digested with acid and after parting is analyzed on a Perkin Elmer atomic absorption machine using air-acetylene flame to .03 grams/t detection limit. The entire set of samples is redone if the quality control standard is outside 2 standard deviations or if the blank is greater than .015 g/t. The values are calculated back to the original sample weight providing a net gold value as well as 2-140 values and a single +140 mesh value. Results are collated by computer and are printed along with accompanying quality control data (repeats and standards).

11.4 Photon Assay Analysis (ALS Global)

Photon Assay analysis works by bombarding samples with high-energy X-Rays which excite atomic nuclei that produce gamma rays at signature energies, allowing for gold detection. Typically, samples are crushed to 2mm and ~500 grams of material used for analysis, however finely pulverised samples may also be assayed. Analysis is non-destructive, not requiring sample decomposition therefore the material may be retained for other uses. Prior to selecting Photon Assay as a method, it is advisable to understand whether it is appropriate for your project as low levels of U and/or Th, and moderate amounts of Ba interfere with gold detection.

12.0 DATA VERIFICATION

As part of this project assessment the authors visited the project site and reviewed the technical reports that have been submitted to the Ministry of Mines since 2011 by Sierra and BMGM. These reports document soil geochemical surveys; underground sampling and rehabilitation work; access road and site infrastructure improvements on the west side of Bear Mountain; surface and underground geotechnical studies; an eight hole, 460 meter drill program completed in 2021 and several metallurgical and ore sorting tests (including comparative metallic gold assays) carried out on material collected from the existing underground workings; and a preliminary assessment of the feasibility of constructing road access from Highway 7 to the east side of Bear Mountain. The total expenditures reported in these assessment reports met the \$2,000,000 expenditure requirement specified in the agreement between Omineca and Sierra in 2011.

12.1 QP Verification Sampling

The verification sample collected by Randell was selected from the material that was collected from Sample Site No.1 reported in Randell's technical memo dated November 7, 2023. The verification sample was submitted for analysis by conventional one assay ton analysis for gold (AA25), by Photon Assay for gold (PA-01) and for multi-element analysis by MEMS61 at ALS Global facility in North Vancouver with assays reported on certificates VA25385211 and VA25375949.

See Table 12.1 below for a summary of the analytical results.

Table 12.1: The Verification Sample Collected by Randell

	Au- PAO1 ppm	Au AA25 ppm	Difference % Au	Ag ppm	As ppm	Bi ppm	Ca %	Cu ppm	Fe %	Mo ppm	S %	Te ppm	W ppm
BMGM CHK01	32.15	30.2	106.46	1.4	1.1	28.7	3.55	106.5	6.27	3.82	2.01	28.7	74

The Author has confirmed that no material work has been carried out on the Property since the July 7, 2023 site visit. Subsequent to the July 7, 2023 site visit BMGM shipped the sample material shown in the Authors technical memo to the TOMRA Sorting facility in Frankfurt, Germany. The Author has reviewed the Laser Sorting technical report provided by TOMRA in ARIS Report No. 43030.

The author is satisfied with adequacy of sample preparation, security, and the analytical procedures used in the collection of the historical sampling programs on the Harrison Gold Property. The author is of the opinion that the description of sampling methods and details of location, number, type, nature, and spacing or density of samples collected, and the size of the area covered are all adequate for the current stage of exploration for the Property.

The drill collar location database was amended by McElhanney Engineering in 2020 using metal detectors to find the location of several historical drill collars. The UTM coordinates and elevation of the surface and underground drillholes were adjusted to match the LiDAR elevation model and the transit survey data. McElhanney's amendments were an improvement to the database, but the reader should use caution when looking at the collar locations as some inconsistencies have been noted by BMGM.

For the historic drilling completed by Kerr Adisson and Bema the authors did not collect any verification samples of historic drill core or assess the QA/QC that was utilized for these drill programs. The remaining historical drill core is now too deteriorated for verification sampling purposes.

For the 2021 drill program, sample assaying was completed at ALS Lab in North Vancouver and BMGM did not insert any additional blanks or standards. However, comparative gold analyses (including fire assay and metallic gold assay) were completed and the comparative gold assay results were consistent with the results of various other sampling programs completed by BMGM.

13.0 MINERAL PROCESSING AND METALLURGICAL TESTING

13.1 Historical Metallurgical testing

G. Hawthorne's P. Eng.'s report on the 1987 pilot plant operation stated that approximately 1,000 tonnes of "low-grade" material was mined and processed through a gravity/flotation pilot mill built by Coastech Research Inc., and operated by Coastech and Kerr Addison Mines Ltd. personnel. Nine batches of more or less 100 tonnes were processed separately, totaling 1052 tonnes. Average sampled grade was 2.40 g/t gold, and back calculated assay was 2.18 g/t gold. Although the plant did not operate at the stated capacity, and did not work as well as hoped or expected, nevertheless, it provided an acceptable concentrate. Average weighted grade of the "tailing" was 0.477 g/t gold. The gravity circuit recovered 2.01 tonnes of concentrate with a grade of 327 g/t gold for a recovery of 31.44% of the gold. The flotation circuit recovered 20.60 tonnes of concentrate with a grade of 49.9 g/t gold for a recovery of 49.16% of the gold. Combined recovery was then 80.61%, and 1685.29 grams of gold were obtained (54 ounces) (Dujardin 1988).

Dujardin further states:

"In summary then, from 921 tonnes averaging 2.39 g/tonne gold (0.066 oz/ton), we recovered 1685 grams (54 oz) of gold in concentrates weighing 22.6 tonnes and assaying 74.5 g/tonne (2.16 oz/ton) Total recovery of gold was 80.6% but varied from 89.4% to 56.9%. As noted in the interim report under "Test Milling Results" the test milling part of the program did not live up to initial expectations and in the writer's opinion this is reflected in the variable recoveries from sample to sample. One of the problems encountered in using a mobile plant of more or less fixed configuration for a small tonnage is that major operational problems cannot be solved by major modifications on site. With this in mind, the recoveries and concentrate grades can be viewed as most encouraging".

The qualified person has been unable to verify the information on the above and the information disclosed is not necessarily indicative of the Harrison Gold Property that is the subject of the technical report. The information is supplied to present full disclosure and should not be relied upon

13.2 Gravity (2016), Steinert (2022), and TOMRA Laser Sorting Test work Completed in 2023

In 2016, Met Solve Laboratories completed a Gravity Recoverable Gold GRG test of material collect from historic mine workings (Refer to Table 9.2). In 2022, Steinert Sorting completed a preliminary laser sorting test (Refer to Table 9.5). In 2023, Bear Mountain Gold Mines conducted a proof-of-concept soring test with ABH Engineering (refer to Table 9.4) and a 500kg sorting test of 100mm minus material slashed from the drift walls of the Jenner underground workings. The material was shipped to the TOMRA test sorting facility in Germany. The objective of the test was to determine if laser sorting could separate diorite fragments containing quartz vein material

from barren diorite fragments. The preliminary test results were encouraging visually, and additional test work is clearly warranted. However, no assays have been performed yet so no estimate the effectiveness of the sorting test work is available yet.

The technology used for BMGM's test work consists of a multi-channel laser scanning system with high resolution. Multiple material characteristics such as brightness color, size, shape and surface structure are processed which also improves sorting efficiency This system allows identification of the quartz material from two sides and increases the sorting efficiency.

The industrial Processing Series (PRO) sorting is designed for the typical minerals processing environment. The simple and compact designed based on the freefall principle is efficient and reliable. The particle size ranging from 20 mm to 120mm is covered by the PRO Secondary which can be equipped with COLOR, near inferred and laser technology. The machine can be quickly optimized for the required sorting tasks by the selection of sorting programs and sensitivity adjustments.

Input material is evenly fed via a vibration feeder onto a chute, where is detected by a multi-channel laser scanning system simultaneously from two sides. If the sensors detect material to be sorted out, it commands the control unit to open the appropriate valves to the ejection module at the end of the chute. The detection materials are separated from the material flow by jets of compressed air. The sorted material is divided into two fractions in the separation chamber.

14.0 MINERAL RESOURCE ESTIMATE

There are no current mineral resources on the Harrison Gold Property.

15.0 THROUGH 22.0 ARE NOT APPLICABLE TO THIS REPORT

Items 15 through 22 of Form 43-101F1 do not apply to the Property that is the subject of this technical report as this is not considered an advanced property.

23.0 ADJACENT PROPERTIES

There are no significant adjoining properties.

24.0 OTHER RELEVANT DATA AND INFORMATION

As part of their ongoing review of conceptual project access and development options BMGM retained McElhanney Engineering to assess an access option that would involve construction of a controlled, 4.5 kilometer long, single lane, industrial road from Highway No.7 (approximately 8.5 kilometers northeast of Agassiz) to the Hydro transmission corridor on the east side of Bear Mountain. This road would traverse Crown Land along the southern and western sides of Hicks Mtn. (within the mineral tenures that comprise the Property) and connect with existing Hydro and Forest Service Roads that could provide access to the east side of Bear Mountain without creating any new surface disturbance. Construction of the road appears to be technically feasible and it was noted that the proposed route would also provide access to a ridge on the south west side of Hicks Mtn. that could potentially be developed as an aggregate quarry. The final technical memo completed by McElhanney Engineering in 2023 is included in ARIS report number 43030.

Based on available technical data it was concluded that the only commercial scale method of developing any significant mineralized zones which may be discovered by ongoing exploration work would be to construct the access road proposed by McElhanney Engineering and establish

underground access from the east side of Bear Mountain. Mine processing and tailings containment facilities could conceptually be constructed adjacent to the existing Hydro transmission line that extends through the northern part of Hicks Mountain and extends along the eastern side of Bear Mountain in the eastern part of the Property.

This approach would significantly reduce impacts on local communities and would not impact recreational use of Sasquatch Provincial Park or Harrison Lake. In the event that conventional mining operations are justified the only visible impacts would be service vehicle and ventilation shaft access from the Bear Mountain FSR and low volumes of commercial truck traffic entering an undeveloped section of Provincial Highway No.7 several kilometers east of Agassiz.

25 INTERPRETATION AND CONCLUSIONS

Since the early 2000's, exploration companies operating in the Yukon have made significant progress defining the characteristics of gold deposits that are associated with these types of intrusions and have classified them as Intrusion Related Gold Systems (IRGS). The geological observations described in this report have led the Author to the following conclusions.

The known quartz diorite and diorite intrusions mapped within the Harrison Gold Property exhibit a distinctive NNW-SSE trend which appears bound to the east and west by faults proposed to be related to the dextral, strike-slip displacement along the NNW-SSE trending, regional-scale Harrison Lake Shear Zone (HLSZ) (Daignault and Malmberg, 2005) (Figure 7a). It could therefore be proposed that the formation of the various stocks within the Property have been in some way structurally controlled by the HLSZ. The limited mapping completed on the Property leaves the bounding faults open to the north and south (Figure 7b)

Extrapolating the trends NNW and SSE shows the far southern diorite intrusion mapped by Cooke (1992) also occurs within these bounds (Figure 7b). Furthermore, the geophysical reinterpretation completed by Condor Consulting Inc (2005) suggests there are certain geophysical signals indicated the presence of buried intrusions along the HLSZ trend. The "gold in soils" database also supports this, with the clear occurrence of gold anomalies spatially associated with the known felsic stocks in the northern and central parts of Bear Mountain. The untested anomalies in the northern and central parts of Bear Mountain and the anomalies that have been identified in the south central and southern parts of Bear Mountain suggest potential for the discovery of additional mineralized intrusions.

The gold mineralization within the intrusive stocks is concentrated within sub-horizontal veining. The currently proposed deposit model suggests an Intrusion-Related Gold System (IRGS) is most likely (e.g. von Einsiedel, 2020). Veining within these systems is generally considered to occur as sub-vertical sheeted veining that forms along the principle stress (σ_1), with the minimum stress direction (σ_3) perpendicular to σ_1 . However, if in a stress regime similar to that suggested for the HLSZ, a near-horizontal preferential orientation may be expected. Furthermore, work by Brown and McClelland (2000) on batholiths near Harrison Lake in the southeast Coast Plutonic Complex suggests that plutons have been emplaced via sheeting and vertical ballooning/inflation. This style of emplacement would further allow for horizontal veining within the upper limits of the system. The repeating sub-horizontal sheeted veining within the Jenner Zone and Jenner Deeps would be evidence of this cyclic emplacement. In terms of economic geology, this may therefore allow for multiple occurrences of horizontal veining within the diorite stocks at various horizons.

The known mineralized zones were identified by shallow drill testing (i.e. typically, less than 200-meter drill holes) within areas which exhibit elevated gold concentrations in soils. Deeper drilling often intersected additional mineralized zones at depth. The best example to illustrate the possible vertical extent of mineralization associated within these intrusions is DDH UG88-121

(Jenner Zone) which intersected mineralization at an elevation of 70 meters below sea level which is 320 meters below the surface outcrop of the Jenner Zone. Since 2012 BMGM has identified “gold in soil” anomalies that indicate potential for the discovery of additional mineralized diorite intrusions.

In summary, several mineralized diorite intrusions have been identified by follow-up drilling of “gold in soil” anomalies. Multiple historic and recently identified soil geochemical anomalies have not yet been followed up. In addition, soil samples have not yet been collected from approximately 40% of the southern half of the Property. Although the historic drilling results reported by previous exploration companies have not yet been verified by systematic drill testing it is possible that the known mineralized zones represent isolated parts of an underexplored Intrusion Related Gold System.

The author is satisfied that there are no significant risks or uncertainties that could impact the reliability of the available exploration data.

26 RECOMMENDATIONS

Based on the available data, a staged, \$1.5 million dollar follow up exploration program designed to verify the historic drilling results; expand the known mineralized zones; and, identify additional mineralized zones along the prospective structural corridor within Bear Mountain is warranted. Exploration activities related to the Jenner and Portal Zone (referred to as the “Mining Area”) can be carried out using the existing road network and underground workings on the west side of Bear Mountain. Exploration activities related to the Hill Zone and evaluating the soil geochemical anomalies that have been identified along the prospective structural corridor (referred to as the Exploration Area) can utilize an existing network of old logging trails on the west side of Bear Mountain for ATV access but will require helicopter support for drill moves. Drilling permits are in effect until September 23, 2027.

The primary objective of Stage 1 should be to complete a sufficient amount of surface and underground drilling to verify the historic drill results reported by Bema and Kerr Adisson.

Stage 1

-upgrade core logging facility	\$ 25,000
-complete required underground rehab and drill site prep	\$100,000
-complete minimum 1,000 meters of underground drilling	\$150,000
-ATV trail and drill road upgrades for Portal and Hill Zone access	\$ 50,000
-complete minimum 500 meters Hill Zone and Portal Zone	\$ 75,000
-equipment rentals and consumables	\$ 50,000
-drill program supervision, assaying and reporting	\$ 50,000
-contingency @ 20%	<u>\$100,000</u>
Total estimated cost	\$600,000

Contingent on confirming historic drill hole results in Stage 1 TTG should complete a program of detailed soil sampling and mapping covering the Hill Zone and the central part of the HLSZ. Based on the positive results of this work a follow up program of 1,000 meters of surface drilling should be carried out. In addition, an additional 1,000 meters of underground drilling should be carried out to further evaluate the Jenner Zone.

Stage 2

-Hill and Portal Zone mapping and soil sampling.	\$200,000
-complete required underground rehab and drill site prep	\$100,000
-complete minimum 1,000 meters of underground drilling	\$150,000
-complete minimum 1,000 meters of surface drilling	\$150,000
-equipment rentals and consumables	\$ 50,000
-drill program supervision, assaying and reporting	\$100,000
-contingency @ 20%	<u>\$150,000</u>
Total estimated cost	\$900,000

27 REFERENCES

- Alldrick, D.J. (1996). Intrusion-related Au Pyrrhotite Veins. In Selected British Columbia Mineral Deposit Profiles, Volume 2 - Metallic Deposits, Lefebure, D.V. and Höy, T, Editors, British Columbia Ministry of Employment and Investment, Open File 1996-13, pp. 57-58.
- Allen, D.G., and G.M., (1983); Summary Report and Exploration and Development Proposal on the Harrison Lake Gold Prospect, (RN Property). Geological Branch Assessment Report No. 11524 dated August 24, 1983.
- Armstrong, J.E., (1953); Vancouver North Map-area, British Columbia, Geol. Survey Canada, Paper 53-28. Barr, D.A., (1980); Gold in the Canadian Cordillera, C.I.M., Bull., Vol. 73, No. 818, pp. 59-76.
- Arthur, A., (1987); Mesozoic Stratigraphy and Paleontology of the West Side of Harrison Lake, Southwestern British Columbia, Unpublished M.Sc. Thesis, University of British Columbia.
- Bakke, A., (1995). The Fort Knox 'porphyry' gold deposit-Structurally controlled stockwork and shear quartz vein, sulphide-poor mineralization hosted by Late Cretaceous pluton, east-central Alaska. In: T. Schroeter, ed. Porphyry deposits of the Northwestern Cordillera of North America. Canadian Institute of Mining, Metallurgy and Petroleum; 46(1), pp. 795-802.
- Barlow, N., (2013). Harrison Gold 092HSW092 MINFILE Detail Report. British Columbia Geological Survey (BGCS): Victoria, BC.
- Barlow, N., (2014). Doctors Point 092HNW071 MINFILE Detail Report. British Columbia Geological Survey (BGCS): Victoria, BC.
- Brown, E.H. and McClelland, W.C., (2000). Pluton emplacement by sheeting and vertical ballooning in part of the southeast Coast Plutonic Complex, British Columbia. GSA Bulletin 112(5). pp. 708-719.
- Brynelson, B.O., Knauer, J.D. and Walker, J.T., (1969). Geochemical Soil Survey; Magnetometer and Electromagnetic Surveys. Assessment Report 01879. Noranda Exploration Company: Rouyn-Noranda, QC.
- Clendennan, A.D., and Bruland, T., (1986); Diamond Drilling Assessment Report on the Abo Property, Harrison Lake, B.C., Report for Kerr Addison Mines Limited dated February 1986.
- Colpron, M. and Nelson, J.L., (2011). A Digital Atlas of Terranes for the Northern Cordillera. British Columbia Ministry of Energy and Mines, BCGS GeoFile 2011-11.
- Condor Consulting Inc., (2005). Report on the Reprocessing and Interpretation of Abo (Harrison) DIGHEM Data for Eagle Plains Resources Inc. Condor Consulting Inc.: Colorado, USA.
- Connor, Liam F.: (2020). Assessment Report Describing the Roch (Chip Sampling, Observations and Interpretations of the Geology, Mineralization and Exploration Model of the Harrison Gold Project, SW British Columbia. Technical Work: SOW 5805801. Assessment Report: 39204. Bear Mountain Gold Mines: Vancouver, BC.

- Cook, D.L., (1992). Geochemical Assessment Report on the Contact Claim. Assessment Report 22744. D.L. Cooke and Associates Ltd : Vancouver, BC. Harrison Gold Project – April 01, 2020 - Technical Report for (SOW 5767699) 126
- Crickmay, C.H., (1925); Harrison Thesis, California, The Geology of the Lake District, unpublished Ph.D., Stanford University, Ohio.
- Croome, N.C., P. Eng., (1987); Preliminary Engineering Study, Kerr Addison Mines Ltd., Harrison Lake Gold Project, Bear Mountain, B.C. Private Report by L.J. Manning and Associates Ltd. for Kerr Addison Mines Ltd. dated December 1987.
- Cui, Y., Miller, D., Schiarizza, P., and Diakow, L.J., (2017). British Columbia digital geology. British Columbia Ministry of Energy, Mines and Petroleum Resources, British Columbia Geological Survey Open File 2017-8, 9p. Data version 2019-12-19.
- Daignault, P.M. and Malmberg, B., (2005). Geological Report: 2005 Diamond Drill Program. Assessment Report 28465. Eagle Plains Resources: Cranbrook, BC.
- Demczuk, L., (1989). Geological and Geochemical Report on the Deer Claims. Assessment Report 18981. Stoney Greek Mines Ltd.: Vancouver, BC.
- Desautels, M.N., (2008). Seneca 092HSW013 MINFILE Detail Report. British Columbia Geological Survey (BGCS): Victoria, BC.
- Downie, C.C., (2006). Geological Report Harrison Lake Gold Property Prepared for Eagle Plains Resources Ltd. Bootleg Exploration Inc.: Cranbrook, BC.
- Dujardin, R.A., (1987); Final Report of the Harrison Lake Gold Project, Bear Mountain, B.C., 1987 Program, Private Report for Kerr Addison Mines Ltd. dated 1987.
- Energy, Mines & Pet. Res., Geological Fieldwork, (1982), Paper 1983-1, pp. 55-61.
- Energy, Mines & Pet. Res., Geological Fieldwork, (1983), Paper 1984-1, pp. 42-53.
- Fornadel, A. P., Spry, P. G., Melfos, V., Vavelidis, M. and Voudouris, P. (2011). Is the Palea Kavala Bi–Te–Pb– Sb±Au district, northeastern Greece, an intrusion-related system? *Ore Geology Reviews* 39(1), pp. 119- 133.
- Gabites, J.E., (1985); Geology and geochronometry of the Cogburn Creek Settler Creek area, Northeast of Harrison Lake, B.C., unpublished M.Sc. Thesis, University of British Columbia, 153 p.
- Gabrielse, H. and Yorath, C.J. (1991). Geology of the Cordilleran Orogen in Canada. 4(1), p. 844. Geological Survey of Canada: Ottawa, ON.
- Gallagher, C., (2010). Geological Report on the Abo (Harrison Gold) Property. Assessment Report 31790. Copper Canyon Resources: Cranbrook, BC.
- Graham-Ruzicka, J.L.. (2015). Gold-Bismuth Occurrences in the Kennedy Igneous Province, North Queensland: Constraints on Tectonic, Magmatic and Hydrothermal processes in Intrusion-Related Gold Deposits. PhD Thesis, James Cook University.

- Harris, Michael, (1988); Preliminary Statistical Study of 1987 Underground Sampling Data, Private Report for Kerr Addison Mines Ltd. dated March 1, 1988.
- Hart, C.J.R., McCoy, D.T., Goldfarb, R.J., Paul Roberts, M.S., Hulstein, R., Bakke, A.A. and Bundtzen, T.K. (2002). Geology, exploration, and discovery in the Tintina Gold Province, Alaska and Yukon. *Society of Economic Geologists*. 9(1). pp. 241-274.
- Hart, C.J.R. (2004). Mid-Cretaceous Magmatic Evolution and Intrusion-Related Metallogeny of the Tintina Gold Province, Yukon and Alaska. PhD Thesis, University of Western Australia. Harrison Gold Project – April 01, 2020 - Technical Report for (SOW 5767699) 127
- Hart, C.J.R., (2004). Mid-Cretaceous Magmatic Evolution and Intrusion-Related Metallogeny of the Tintina Gold Province, Yukon and Alaska. PhD Thesis, University of Western Australia.
- Hart, C.J.R. (2005). Classifying, distinguishing and exploring for intrusion-related gold systems. *The Gange: Newsletter of the Geological Association of Canada Mineral Deposits Division* 87(1), pp. 1-9.
- Hawthorn, G., (1988); Final Report, Pilot Plant Operation, Harrison Lake, B.C., Abo Gold Property, Private Report for Kerr Addison Mines Ltd. dated March 1988.
- Ishihara, S., (1977). The magnetite-series and ilmenite-series granitic rocks. *Mining Geol.* 27(1), pp. 293-305.
- Kahlert, B.H., (1989). 1988 Assessment Report on the Harrison Gold Property (Previously known as the Abo property). Assessment Report 18505. Bema Gold Corporation: Vancouver, BC.
- Kleinspehn, K.L., (1985); Cretaceous sedimentation and tectonics, Tyaughton-Methow Basin, Southwestern British Columbia, *Canadian Journal of Earth Sciences*, V. 22, p. 154-174.
- Littlejohn, A.L., (1983); Report on Petrography and Mineralogy at Harrison Lake Property, unpublished report for Rhyolite Resources Inc. by Vancouver Petrographics Ltd.
- Lowes, B.E., (1972); Metamorphic petrology and structural geology of the area east of Harrison Lake, British Columbia, unpublished Ph.D. Thesis, University of Washington, 162 p.
- Lynch, G., (1992). Deformation of Early Cretaceous volcanic-arc assemblages, southern Coast Belt, British Columbia. *Can. J. Earth Sci.* 29(1), pp. 2706-2721.
- Lynch, G., (1995). Geochemical polarity of the Early Cretaceous Gambier Group, southern Coast Belt, British Columbia. *Can. J. Earth Sci.* 32(1), pp. 675-685.
- Mair, J.L., Hart, C.J.R. and Stephens, J.R. (2006). Deformation history of the northwestern Selwyn basin, Yukon, Canada: implications for orogen evolution and mid-Cretaceous magmatism. *GSA Bulletin*. 118(3), pp.304-323.
- Maloof, T., Baker, T. and Thompson, J. (2001). The Dublin Gulch intrusion-hosted gold deposit, Tombstone plutonic suite, Yukon Territory, Canada. *Mineralium Deposita* 36(1), pp. 583-593.

- Marchant, P. Bradley, (1988); Kerr Addison Mines Ltd., Harrison Lake Gold Project, Flotation Concentrate Cyanidation, Preliminary Scoping Tests, Private Report by Coastech Research Inc. dated Feb 17, 1988.
- McCoy, D., Newberry, R., Hart, C.J.R., Bundtzen, T., Farnstrom, H., Werdon, M. and Szumigala, D. (2002). Geology, exploration and discovery in the Tintina Gold Province, Alaska and Yukon. AAPG Cordilleran Section Meeting, Anchorage.
- Monger, J.W.H., (1966); The Stratigraphy and Structure of the Type Area of the Chilliwack Group, Southwestern British Columbia, unpublished Ph.D. Thesis, University of British Columbia.
- Monger, J.W.H., (1970); Hope map-area, west half (92H W 2), British Columbia Geological Survey of Canada, Paper 69-47, 75 p.
- Monger, J.W.H., (1977); Upper Paleozoic rocks of the Western Canadian Cordilleran Evolution, Canadian Journal of Earth Sciences v.14, p.1832-1859.
- Monger, J.W.H., (1985a); Structural evolution of the southwestern Intermontane Belt, Ashcroft and Hope map sheets, British Columbia, in Current Research. Geological Survey of Canada, Paper 85-1A p.349-358.
- Monger, J.W.H., (1985b); Terranes in the southeastern Coast Plutonic Complex and Cascade Fold Belt, Geological Society of America, Abstracts with Program v. 17, p.371.
- Monger, J.W.H., (1986). Geology between Harrison Lake and Fraser River, Hope Map Area, southwestern B.C. in *Current Research, Part B. Geological survey of Canada, Paper 86-1B.* p 699-706.
- Monger, J.W.H., Price, R.A., and Tempelman-Kluit, D., (1982). Tectonic accretion and the origin of major metamorphic and plutonic belts in the Canadian Cordillera. *Geology*. 10(1), p. 70-75.
- New Westminster Mining Division, Private Report for Bema Gold Corporation dated July (1990).
- Norman, G., (1989). Summary Report of the Harrison Gold Project, New West Minster Mining Division, Harrison Lake, British Columbia. Private Report for Bema Gold Corporation dated April 1989.
- Norman, G., (1990a). (1989) Assessment Report on the Harrison Gold Property. *Assessment Report 19584*. Norman Geological: Vancouver, BC.
- Norman, G., (1990b). 1990 Assessment Report on the Harrison Gold Property. Assessment Report 20144. Norman Geological: Vancouver, BC.
- Norman, George, (1990); 1989 Assessment Report on the Harrison Gold Property, Harrison Lake, B.C., New Westminster Mining Division, Private Report for Bema Gold Corporation dated January 1990.
- Norman, George, (1990); Diamond Drilling Report on the Breccia Zone and Hill Stock, Harrison Gold Property, Harrison Lake, B.C., New Westminster Mining Division, Private Report for Bema Gold Corporation dated June 1990, 19 pp. plus drill logs, plans and sections.

- Pautler, Jean, (2003): Report on the 2003 Diamond Drill and Trenching Program on the Abo Gold Property; BCEMPR Assessment Report 37377
- Pautier, J., (2004):. Report on the 2003 Diamond Drill and Trenching Program on the Abo Gold Property. Assessment Report: 27377. Northern Continental Resources Ltd.: Vancouver, BC.
- Payne, J.G., Bratt, J.A. and Stone, B.G., (1980); Deformed Mesozoic Volcanogenic Cu-Zn Sulphide Deposits in the Britannia District, British Columbia, *Econ. Geol.*, vol. 75, pp. 700-721.
- Pearce, T.H., (1968). A contribution to the theory of variation diagrams. *Contrib. Mineral. Petrol.* 19(1), pp. 142-157.
- Pigage, L.C., (1976); Metamorphism of the Settler Schist, south Yale, British Columbia, *Canadian Journal of Sciences*, v.13, p.405-421.
- Price, B.J., (1995); Opinion of Value for the Harrison Lake Gold Property. Draft Report for Pacific Comox Resources Ltd. dated March 7, 1995.
- Price, B.J., (1998); Geological Report and Opinion of Value for the Harrison Lake Gold Property. Report for Global Gold Inc. dated May 1998.
- Price, B.J., (2002); Geological Report for the Harrison Lake Gold Property. Prepared for Northern Continental Resources Ltd; dated November 20, 2002
- Price, B.J., and Daigneault, P.(2008); Geological Report for the Harrison Lake Gold Property. Prepared for Egoli Resources Ltd. But not filed.
- Price, B.J., and Daigneault, P.(2009); Geological Report for the Harrison Lake Gold Property. Prepared for Bling Capital Corp.. But not filed.
- Price, Barry J. (2010); Technical Report NI 43-101 Complaint Harrison Lake Gold Property Harrison Lake B.C. New Westminster M.D. Prepared for Copper Canyon Resource Ltd. Effective Date December 13, 2010. SEDAR Profile Number 000023891
- Ray, G.E., (1983); The Nagy Gold Occurrences, Doctors Point, Harrison Lake (92H/12W), B.C. Ministry of Energy, Mines & Pet. Res., *Geological Fieldwork*, 1982, Paper 1983-1, pp. 55-61.
- Ray, G.E., Coombes, S. and White, G., (1984); Harrison Lake Project (92H/5, 12, 92G/9), B.C. Ministry of Energy, Mines & Pet. Res., *Geological Fieldwork*, 1983, Paper 1984-1, pp. 42-53.
- Ray, G.E. and Coombes, S., (1985); Harrison Lake Project (92H/5, 12, 92G/9, 16), B.C. Ministry of Energy, Mines & Pet. Res., *Geological Fieldwork and Current Research*, 1985, Paper 1985-1.
- Ray, G.E., (1991). The geochemistry of Early Cretaceous volcanic rocks on the west side of Harrison Lake, southern British Columbia (92H112). In *Geological fieldwork 1990*. British Columbia Department of Mines, Paper 1991-1, pp. 41 -46.
- Reamsbottom, S., (1971-1974); Geology and metamorphism of the Breakenridge area, Harrison Lake, unpublished Ph.D. Thesis, University of E Columbia, 155 p.

- Richards, T. and White, W. H., (1970). K-Ar ages of Plutonic Rocks between Hope, B. C. and the 49th Parallel. *Can. Jour. Earth Sciences*, Vol. 7, pp. 1203-1207.
- Richards, T.A. and McTaggart, K.C., (1976); Granitic rocks of the southern Coast Range Complex and northern Cascades of British Columbia, *Geological Society of America Bulletin*, v.87, p.935-953.
- Richards, T.A., (1971); Plutonic rocks between Hope, B.C. and the parallel, unpublished Ph.D. Thesis, University of British Columbia, 178 pp.
- Robert, F., Brommecker, R., Bourne, B.T., Dobak, P.J., McEwan, C.J., Rowe, R.R., Zhou, X., (2007). Models and Exploration Methods for Major Gold Deposit Types. In *"Proceedings of Exploration 07: Fifth Decennial International Conference on Mineral Exploration"* edited by B. Milkereit, p. 691-711.
- Roddick, J.A., Muller, J.E., and Okulitch, A.V., (1979); Fraser River, British Columbia-Washington, Geological Survey of Canada, Map 12 scale 1:1000 000.
- Rombach, C. and Newberry, R.J. (2001). Shotgun deposit: granite porphyry-hosted gold-arsenic mineralization in southwestern Alaska. *Mineralium Deposita*. 36(1), pp. 607-621. Sawyer, J.B.P., 1984. *Review of the Exploration of Gold Occurrences on the RN Property, ABO Oil*
- Sawyer, J.B.P., (1984). Review of the Exploration of Gold Occurrences on the RN Property, ABO Oil Corporation. Internal Company Report, May 14, 1984.
- Sillitoe, R.H. (1991). Intrusion-related gold deposits. *Gold Metallurgy and Exploration*. pp. 165-209
- Sillitoe, R.H. and Thompson J.F.H. (1998). Intrusion-related vein gold deposits: types. Tectono-magmatic settings and difficulties of distinction from orogenic gold deposits. *Resource Geology*. 48(1), pp. 237-250.
- Smith, Paul A., (2001); Dighem Survey for Eagle Plains Resources Ltd., Harrison Lake area, British Columbia, NTS 92H/5. Private Report for Eagle Plains by Fugro Airborne Surveys Corp. dated November 28, 2001.
- Stanley, C.R. and H.E. Madeisky, (1996), Lithogeochemical exploration for metasomatic zones associated with hydrothermal mineral deposits using molar element ratio analysis. *Introduction, Lithogeochemical Exploration Research Project, Mineral Deposit Research Unit, University of British Columbia, Short Course Notes*, 200 p.
- Thompson, J.F.H., Sillitoe, R.H., Baker, T., Lang, J.R. and Mortensen, J.K., (1999). Intrusion-related gold deposits associated with tungsten-tin provinces. *Mineralium Deposita*. 34(1), pp. 197-217.
- Vikent'eva, O.V., Yu, V., Prokofiev, Gamyarin, G.N., Goryachev, N.A. and Bortnikova, N.S. (2018). Intrusion-related gold-bismuth deposits of North-East Russia: PTX parameters and sources of hydrothermal fluids.
- Von Einsiedel, C.A., (2013). Report on 2012 Harrison Gold Project Work Program Physical Work – Rehabilitation of Jenner Portal, Technical Work Soil Geochemical Surveys and Detailed

Topographic Mapping: SOW 5406857, 5422954, 5427007, & 5428105. Assessment Report: 33914. Bear Mountain Gold Mines: Vancouver, BC.

Von Einsiedel, C.A., (2016). Report on 2015 Harrison Gold Project Work Program Technical Work – Preliminary Gravity Testwork (Historic RN Mine – Old Adit) and Vein Sampling North Sasquatch Area: SOW 5583755. Assessment Report: 36010. Bear Mountain Gold Mines: Vancouver, BC.

Von Einsiedel, C.A., (2017). Report on 2016 Harrison Gold Project Work Program Technical Work Follow-Up Gravity Testwork Historic RN Mine – Old Adit Preliminary First Nations Consultation: SOW 5630644. Assessment Report: 36570. Bear Mountain Gold Mines: Vancouver, BC.

Von Einsiedel, C.A., (2018). Report on the Harrison South Gold Project Summary of Technical Information Proposed Exploration Program: SOW 5678971. Assessment Report: 37366. Bear Mountain Gold Mines: Vancouver, BC

Von Einsiedel, C.A., (2020). Report on 2018-2019 Harrison Gold Project Technical Work: SOW 5767699. Assessment Report: 39014. Bear Mountain Gold Mines: Vancouver, BC.

Von Einsiedel, C.A., (2025). Report on Harrison Gold Project Period January 202 to March 31, 2022. Technical Work: SOW 5856963. Assessment Report: 40021. Bear Mountain Gold Mines: Vancouver, BC.

Von Einsiedel, C.A., (2025). Report on Harrison Gold Project Period September 2022 to March 31, 2025. Technical Work: SOW 6077466. Assessment Report: 43030. Bear Mountain Gold Mines: Vancouver, BC.

**Certificate of Qualified Person
Grant Carlson, P.Eng.**

I, Grant Carlson, P.Eng., certify that I am employed as a Director, Technical Services with Fuse Advisors Inc., with an office address of 595 Burrard Street, Suite 3113, Three Bentall Centre, Vancouver, BC, V7X 1J1.

This certificate applies to the technical report titled “NI 43-101 Technical Report on the Harrison Gold Project” that has an effective date of 25 February 2026.

1. I graduated from the University of British Columbia in 2007 with a Bachelor of Applied Science in Mining Engineering.
2. I am a Professional Engineer registered with Engineers and Geoscientists of BC (No. 36395).
3. I have practiced my profession for 18 years. I have been directly involved in mining operations in Canada, in similar climatic conditions as the Harrison Gold Project, as a planning engineer, shift supervisor, mine manager, chief operating officer, and mining consultant. I have worked on, visited, and carried out due diligences on precious metal, base metal, diamond, and coal mining operations around the world including Russia, Madagascar, Australia, Eritrea, Lesotho, Ghana, Sierra Leon, Brazil, Peru, Chile, Argentina, Suriname, Guyana, Mexico, the United States, and Canada.
4. I have read the definition of “Qualified Person” set out in the National Instrument 43-101 Standards of Disclosure for Mineral Projects (NI 43-101) and certify that by virtue of my education, affiliation to a professional association, and past relevant work experience, I fulfil the requirements to be a “Qualified Person” for those sections of the Technical Report that I am responsible for preparing.
5. I have visited the site on 6 July 2023.
6. I am responsible for Section 24, in addition to disclosure relating to the use of the existing underground workings for exploration drilling in Sections 1, 25, and 26.
7. I am independent of Trans Canada Gold Corp. as independence is defined in Section 1.5 of NI 43-101.
8. I have been previously involved with the Harrison Gold Project as a consultant and reviewed the Project in 2023 for Fuse Advisors. I have had no prior involvement with Trans Canada Gold Corp.
9. I have read NI 43-101 and the sections of the Technical Report that I am responsible for have been prepared in compliance with that Instrument. As of the effective date of the Technical Report, to the best of my knowledge, information, and belief, the sections of the Technical Report for which I am responsible contain all scientific and technical information that is required to be disclosed to make those sections of the Technical Report not misleading.

Dated: 25 February 2026

“Signed and sealed”

Grant Carlson, P.Eng.

Certificate of Qualified Person **Andrew Randell, P.Ge.**

I, Andrew Randell, P.Ge., certify that I am employed as a CEO and Principal Geoscientist with Strata GeoData Services Ltd., with an office address of 470 Granville Street, Suite 330, Vancouver, BC, V7X 1J1.

This certificate applies to the technical report titled "NI 43-101 Technical Report on the Harrison Gold Project" that has an effective date of 25 February 2026.

1. I graduated from the University of Wales, College of Cardiff in 1998 with a Bachelor in Environmental Geoscience.
2. I am a Professional Geologist registered with Engineers and Geoscientists of BC (No. 44669).
3. I have practiced my profession for 23 years. I have been directly involved in mineral exploration and early-stage mine development in Canada, in similar climatic conditions as the Harrison Gold Project, as a chief geologist, mine manager, chief operating officer, and geological consultant. I have worked on, visited, and carried out due diligences on precious and base metal operations around the world including Guyana, Canada, United States, and Fiji.
4. I have read the definition of "Qualified Person" set out in the National Instrument 43-101 Standards of Disclosure for Mineral Projects (NI 43-101) and certify that by virtue of my education, affiliation to a professional association, and past relevant work experience, I fulfil the requirements to be a "Qualified Person" for those sections of the Technical Report that I am responsible for preparing.
5. I have visited the site on 17 July 2023.
6. I am responsible for all sections of this report with the exception of Section 24.
7. I am independent of Trans Canada Gold Corp. as independence is defined in Section 1.5 of NI 43-101.
8. I have been previously involved with the Harrison Gold Project as a consultant and reviewed the Project in 2023 for Strata GeoData Services Ltd. I have had no prior involvement with Trans Canada Gold Corp.
9. I have read NI 43-101 and the sections of the Technical Report that I am responsible for have been prepared in compliance with that Instrument. As of the effective date of the Technical Report, to the best of my knowledge, information, and belief, the sections of the Technical Report for which I am responsible contain all scientific and technical information that is required to be disclosed to make those sections of the Technical Report not misleading.

Dated: 25 February 2026

"Signed and sealed"

Andrew Randell, P.Ge.

29 SIGNATURE PAGE

From: Grant Carlson, Fuse Advisors Inc.

To: British Columbia. Securities Commission, Alberta Securities Commission, & Financial and Consumer Affairs Authority of Saskatchewan.

I, Grant Carlson, do hereby consent to the public filing of technical report entitled "NI 43-101 Technical Report on the Harrison Gold Project" and dated February 25, 2026 (the "Technical Report") by Trans Canada Gold Corp (the "Issuer"), with the TSX Venture Exchange under its applicable policies and forms in connection with the [Option Agreement with Bear Mountain Gold Mines to acquire 60% interest in the Harrison gold Project (see press release February 2 2026) to be entered into by the Issuer and I acknowledge that the Technical Report will become part of the Issuer's public record.

Grant Carlson, February 25, 2026

Signed Dated

Fuse Advisors Inc.

Suite 3123, 595 Burrard Street, Vancouver, BC V7X 1J1



FUSE ADVISORS
PART OF **SLR**

February 25, 2026

British Columbia Securities Commission
Alberta Securities Commission
Financial and Consumer Affairs Authority of Saskatchewan

Fuse Project No.: 116.001
Permit to Practice: 1004529

**RE: Qualified Person Consent Letter for 43-101
Technical Report on the Harrison Gold Project**

I, Grant Carlson, do hereby consent to the public filing of technical report entitled Technical Report on the Harrison Gold Project and dated February 2, 2026 (the "Technical Report") by Trans Canada Gold Corp. (the "Issuer"), with the TSX Venture Exchange under its applicable policies and forms in connection with the Option Agreement with Bear Mountain Gold Mines to acquire a 60% interest in the Harrison Gold Project (see press release dated February 2, 2026) to be entered into by the Issuer and I acknowledge that the Technical Report will become part of the Issuer's public record.

Regards,

Grant Carlson, P.Eng. (BC)
Director of Technical Services
Grant.carlson@fuse-advisors.com

From: Andrew Randell, Strata GeoData Services Ltd.,

To: British Columbia. Securities Commission, Alberta Securities Commission, & Financial and Consumer Affairs Authority of Saskatchewan.

I, Andrew Randell, do hereby consent to the public filing of technical report entitled "NI 43-101 Technical Report on the Harrison Gold Project" and dated February 25, 2026 (the "Technical Report") by Trans Canada Gold Corp (the "Issuer"), with the TSX Venture Exchange under its applicable policies and forms in connection with the [Option Agreement with Bear Mountain Gold Mines to acquire 60% interest in the Harrison gold Project (see press release February 2 2026) to be entered into by the Issuer and I acknowledge that the Technical Report will become part of the Issuer's public record.

Andrew Randell, February 25, 2026

Signed Dated

SGDS Hive Geological Consulting
Suite 330, 470 Granville Street, Vancouver, BC, V6C 1V4



February 25th, 2026

RE: CONSENT OF QUALIFIED PERSON FOR NI 43-101 TECHNICAL REPORT ON THE HARRISON LAKE GOLD PROJECT

I, **Andrew Randell, P.Geo.**, of **Invermere, British Columbia, Canada**, do hereby consent to:

1. The public filing of the Technical Report entitled "**Technical Report on the Harrison Lake Gold Project**" dated **February 2nd, 2026**, with an effective date of **February 2nd, 2026**, prepared in accordance with **National Instrument 43-101** ("NI 43-101").
2. The use of my name and the inclusion or reference to my work, information, and opinions contained in the Technical Report, or extracts therefrom, in the following documents of the Company:
 - the Technical Report filed on **SEDAR+**;
 - any news release announcing the filing of the Technical Report; and
 - any other continuous disclosure documents filed by the Company that reference the Technical Report.
3. The use of extracts or summaries of the Technical Report in the Company's public disclosure, including news releases, corporate presentations, and other disclosure documents, provided that such extracts or summaries are consistent with the contents of the Technical Report.

I certify that I have read the news release of the Company dated **February 2nd, 2026**, announcing the filing of the Technical Report and that it fairly and accurately represents the information in the sections of the Technical Report for which I am responsible.

I am a "Qualified Person" as defined by NI 43-101.

Dated this **25th** day of **February 2026**.



Andrew Randell, P.Geo.
Qualified Person
Principal Geoscientist

SGDS Hive Geological Consulting

andy@sgds-hive.com

30 ANALYTICAL CERTIFICATES



ALS Canada Ltd.
 2103 Dollarton Hwy
 North Vancouver BC V7H 0A7
 Phone: +1 604 984 0221 Fax: +1 604 984 0218
 www.alsglobal.com/geochemistry

To: RAM EXPLORATION LTD.
 8888 SHOOK ROAD
 MISSION BC V2V 7N1

Page: 1
 Total # Pages: 2 (A - D)
 Plus Appendix Pages
 Finalized Date: 16-DEC-2025
 This copy reported on 9-JAN-2026
 Account: PJA

CERTIFICATE VA25375949

Project: Bear Mountain Project

This report is for 1 sample of Rock submitted to our lab in Vancouver, BC, Canada on 25-NOV-2025.


The following have access to data associated with this certificate:

ANDY .	C.V. EINSIEDEL
--------	----------------

SAMPLE PREPARATION	
ALS CODE	DESCRIPTION
WEI-21	Received Sample Weight
LOG-22	Sample login - Rcd w/o BarCode
PUL-QC	Pulverizing QC Test
CRU-31	Fine crushing - 70% <2mm
SPL-21	Split sample - riffle splitter
PUL-31	Pulverize up to 250g 85% <75 um
SPL-32a	500g Crush Split for Photon Assay
DISP-01	Disposal of all sample fractions

ANALYTICAL PROCEDURES		
ALS CODE	DESCRIPTION	INSTRUMENT
Au-AA25	Ore Grade Au 30g FA AA finish	AAS
ME-MS61	48 element four acid ICP-MS	

This is the Final Report and supersedes any preliminary report with this certificate number. Results apply to samples as submitted. All pages of this report have been checked and approved for release.
 ***** See Appendix Page for comments regarding this certificate *****

Signature: 
 Paul Zhu, Vancouver Hub Operations Manager



ALS Canada Ltd.
 2103 Dollarton Hwy
 North Vancouver BC V7H 0A7
 Phone: +1 604 984 0221 Fax: +1 604 984 0218
 www.alsglobal.com/geochemistry

To: RAM EXPLORATION LTD.
 8888 SHOOK ROAD
 MISSION BC V2V 7N1

Page: 2 - A
 Total # Pages: 2 (A - D)
 Plus Appendix Pages
 Finalized Date: 16-DEC-2025
 Account: PJA

Project: Bear Mountain Project

CERTIFICATE OF ANALYSIS VA25375949

Sample Description	Method Analyte Units LOD	WEI-21	ME-M561	ME-M561	ME-M561	ME-M561	ME-M561	ME-M561	ME-M561	ME-M561	ME-M561	ME-M561	ME-M561	ME-M561	ME-M561	ME-M561	ME-M561
		Recvd Wt. kg	Ag ppm	Al %	As ppm	Ba ppm	Ba ppm	Bi ppm	Ca %	Cd ppm	Ce ppm	Co ppm	Cr ppm	Cs ppm	Cu ppm	Fe %	
BMGM CHK01		1.64	1.40	6.10	1.1	120	0.35	28.7	3.55	0.13	11.35	23.1	47	0.54	106.5	6.27	

***** See Appendix Page for comments regarding this certificate *****



ALS Canada Ltd.
 2103 Dollarton Hwy
 North Vancouver BC V7H 0A7
 Phone: +1 604 984 0221 Fax: +1 604 984 0218
 www.alsglobal.com/geochemistry

To: RAM EXPLORATION LTD.
 8888 SHOOK ROAD
 MISSION BC V2V 7N1

Page: 2 - D
 Total # Pages: 2 (A - D)
 Plus Appendix Pages
 Finalized Date: 16-DEC-2025
 Account: PJA

Project: Bear Mountain Project

CERTIFICATE OF ANALYSIS VA25375949

Sample Description	Method Analyte Units LOD	ME-M561	ME-M561	ME-M561	ME-M561	Au-AA25
		W ppm	Y ppm	Zn ppm	Zr ppm	Au ppm
BMGM CHK01		74.0	11.2	71	2.6	30.2

***** See Appendix Page for comments regarding this certificate *****



ALS Canada Ltd.
 2103 Dollarton Hwy
 North Vancouver BC V7H 0A7
 Phone: +1 604 984 0221 Fax: +1 604 984 0218
 www.alsglobal.com/geochemistry

To: RAM EXPLORATION LTD.
 8888 SHOOK ROAD
 MISSION BC V2V 7N1

Page: Appendix 1
 Total # Appendix Pages: 1
 Finalized Date: 16-DEC-2025
 Account: PJA

Project: Bear Mountain Project

CERTIFICATE OF ANALYSIS VA25375949

CERTIFICATE COMMENTS													
	ANALYTICAL COMMENTS												
Applies to Method:	REEs may not be totally soluble in this method. ME-MS61												
	LABORATORY ADDRESSES												
Applies to Method:	Processed at ALS Vancouver located at 2103 Dollarton Hwy, North Vancouver, BC, Canada.												
	<table border="0"> <tr> <td>Au-AA25</td> <td>CRU-31</td> <td>DISP-01</td> <td>LOG-22</td> </tr> <tr> <td>ME-MS61</td> <td>PUL-31</td> <td>PUL-QC</td> <td>SPL-21</td> </tr> <tr> <td>SPL-32a</td> <td>WEI-21</td> <td></td> <td></td> </tr> </table>	Au-AA25	CRU-31	DISP-01	LOG-22	ME-MS61	PUL-31	PUL-QC	SPL-21	SPL-32a	WEI-21		
Au-AA25	CRU-31	DISP-01	LOG-22										
ME-MS61	PUL-31	PUL-QC	SPL-21										
SPL-32a	WEI-21												



ALS Canada Ltd.
 2103 Dollarton Hwy
 North Vancouver BC V7H 0A7
 Phone: +1 604 984 0221 Fax: +1 604 984 0218
 www.alsglobal.com/geochemistry

To: RAM EXPLORATION LTD.
 8888 SHOOK ROAD
 MISSION BC V2V 7N1

Page: 1
 Total # Pages: 2 (A)
 Plus Appendix Pages
 Finalized Date: 8-DEC-2025
 This copy reported on 9-JAN-2026
 Account: PJA

CERTIFICATE VA25385211

Project: Bear Mountain Project

This report is for 1 sample of Rock submitted to our lab in Vancouver, BC, Canada on 25-NOV-2025.

The following have access to data associated with this certificate:
 C.V. EINSIEDEL

SAMPLE PREPARATION

ALS CODE	DESCRIPTION
FND-03	Find Reject for Addn Analysis
TRA-21	Transfer sample
SND-01	Send samples to external laboratory

ANALYTICAL PROCEDURES

ALS CODE	DESCRIPTION	INSTRUMENT
Au-PA01	Au by Photon Assay - Crushed Reject	PA

This is the Final Report and supersedes any preliminary report with this certificate number. Results apply to samples as submitted. All pages of this report have been checked and approved for release.
 ***** See Appendix Page for comments regarding this certificate *****

Signature:

Natalie Caciagli, General Manager, North America

