



GOLDEN SKY MINERALS CORP.
2110 -650 West Georgia Street
Vancouver, British Columbia
Canada, V6B 4N9
Telephone: 604 568 8807
Facsimile: 604 681 1864
www.goldenskyminerals.com

TSX-V: AUEN

Golden Sky Minerals Reports Results of 2025 Exploration at Rayfield-Gjoll Copper-Gold Project

Vancouver, **February 17, 2026** – **Golden Sky Minerals Corp. (TSX-V: AUEN.V)** (“Golden Sky” or “The Company”) is pleased to announce the results of a heli-borne magnetic survey over the Rayfield-Gjoll Copper-Gold Project, located in south-central British Columbia (Figure 1).

Results of the airborne survey, presented in Figures 2, 3, and 4, highlight a well-developed structural framework defined by distinct magnetic features. Contours of the calculated vertical gradient (CVG) and of the total magnetic intensity (TMI) delineate multiple linear to curvilinear zones of magnetic disruption interpreted as fault-related features. These structures define dominant northwest, north–south, and northeast-trending orientations, consistent with regional structural fabrics within the Quesnel Trough.

Interpretation of the airborne magnetic data is based on compilation of extensive historical geological and geophysical datasets, government data, and geological mapping completed by Golden Sky Minerals Corp. and associated consultants. These datasets provide the important geological context for understanding the magnetic responses across the Rayfield-Gjoll Project and their relationship to observed rock types, alteration, structural, and mineralized settings. Consequently, magnetic lows are interpreted as the principal exploration targets, reflecting zones where hydrothermal alteration has destroyed primary magnetite.

At the Rayfield target, an airborne magnetic survey completed in conjunction with a detailed geological mapping program in late 2025 delineated multiple magnetic low corridors (Figure 2). Geological mapping within these corridors identified zones of potassic and propylitic alteration that are spatially coincident with recently received copper grades of up to 9653.0 ppm Cu (0.96% Cu). These alteration zones are interpreted to be structurally controlled, consistent with fracture development evident in the magnetic data, allowing for potential fault-controlled fluid movement.

The Gnome target (Figure 3) is characterized by a broad zone of moderate magnetic response, interpreted as representing a phyllic alteration domain surrounding a porphyry center. Historic drilling at Gnome intersected mineralized monzonitic dikes, supporting the interpretation that the moderate magnetic signature reflects partial magnetite destruction associated with phyllic and propylitic alteration overprinting Nicola Group volcanics and earlier intrusive phases.

In the southern block targets (Figure 4), including Mowich and Criss Creek, there are multiple discrete magnetic anomalies that have been historically mapped as diorite, syenite, and granodiorite intrusions. These intrusive bodies are spatially associated with polymetallic quartz veining, suggesting a genetic relationship between magmatism, structure, and mineralization. The coincidence of intrusive-related magnetic anomalies with mapped veining further supports the interpretation that these targets represent prospective zones for epithermal and porphyry-style mineralization.

John Newell, President and CEO of Golden Sky Minerals, states: "The airborne magnetic survey has delivered highly encouraging results at the Rayfield–Gjoll Copper-Gold Project. The survey clearly outlines key structural trends that align with known mineralization and historical drilling, which increases our confidence in the project's overall exploration potential. At Rayfield, the results highlight strong correlations with higher-grade copper zones, while at Gnome and across the southern block, including Mowich, the survey outlines larger-scale targets that remain largely underexplored. In several areas, previous drilling appears to have tested only the edges of these systems, providing upside exploration potential within these systems. Overall, this work significantly improves our ability to define and prioritize targets, and positions the Company well for the next phase of exploration, including planned induced polarization (IP) geophysical surveying and diamond drilling later this year."

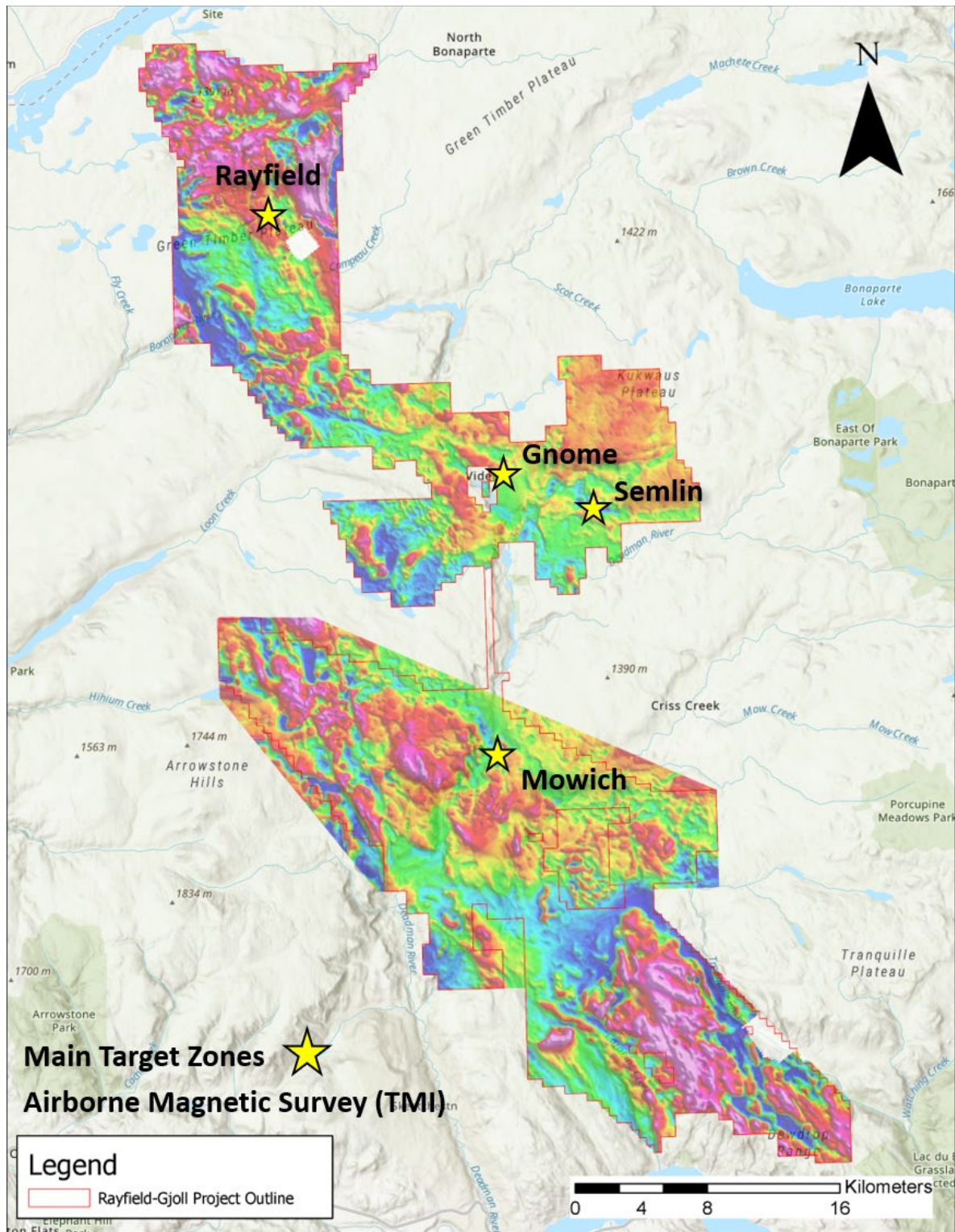


Figure 1: Project-wide results from the 2025 airborne magnetic survey outlining the main prospective targets for the Rayfield-Gjoll Copper-Gold Project.

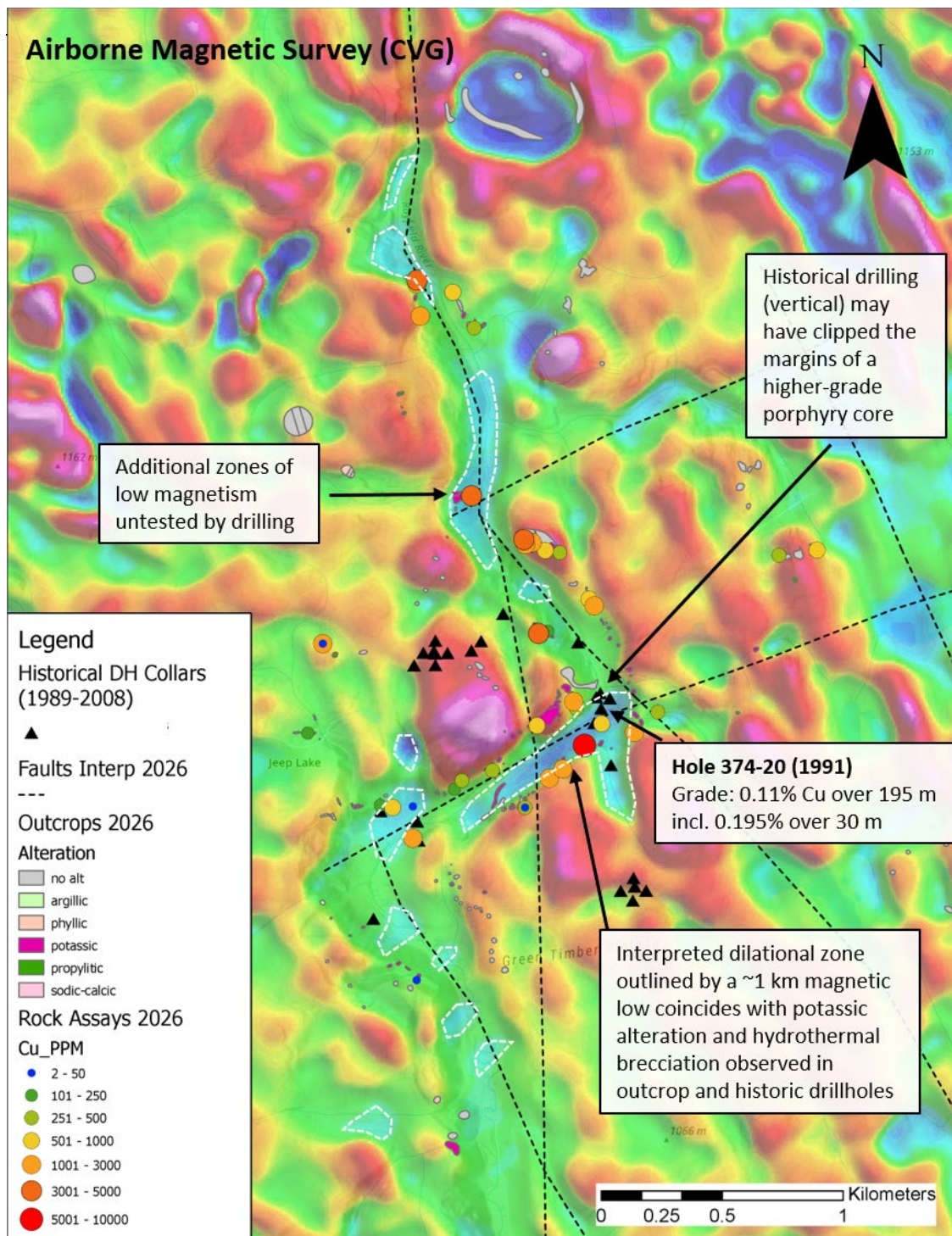


Figure 2: Potassic and propylitic alteration coincides with magnetic lows, highlighting areas where mineralizing fluids have locally strongly altered the host rocks and enhanced copper mineralization.

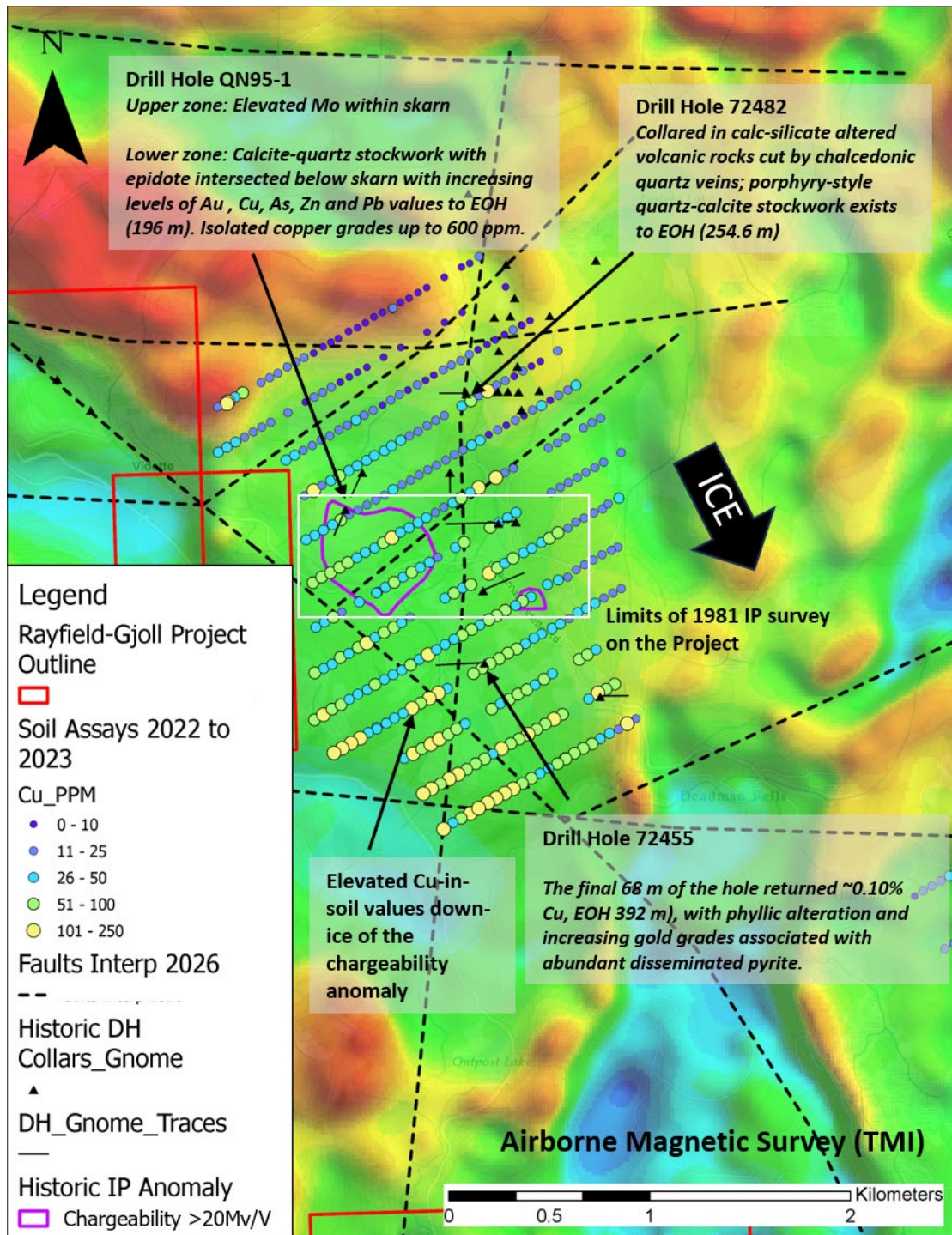


Figure 3: The 2025 airborne magnetic survey has identified a broad moderate magnetic anomaly that overlaps a historical geophysical IP anomaly from Scott, 1981 (AR09223). Elevated copper-in-soil values extending from this area further support the potential for a large mineralized system at depth. These results suggest that the phyllic/propylitic zone of a porphyry system may be exposed at the Gnome Target.

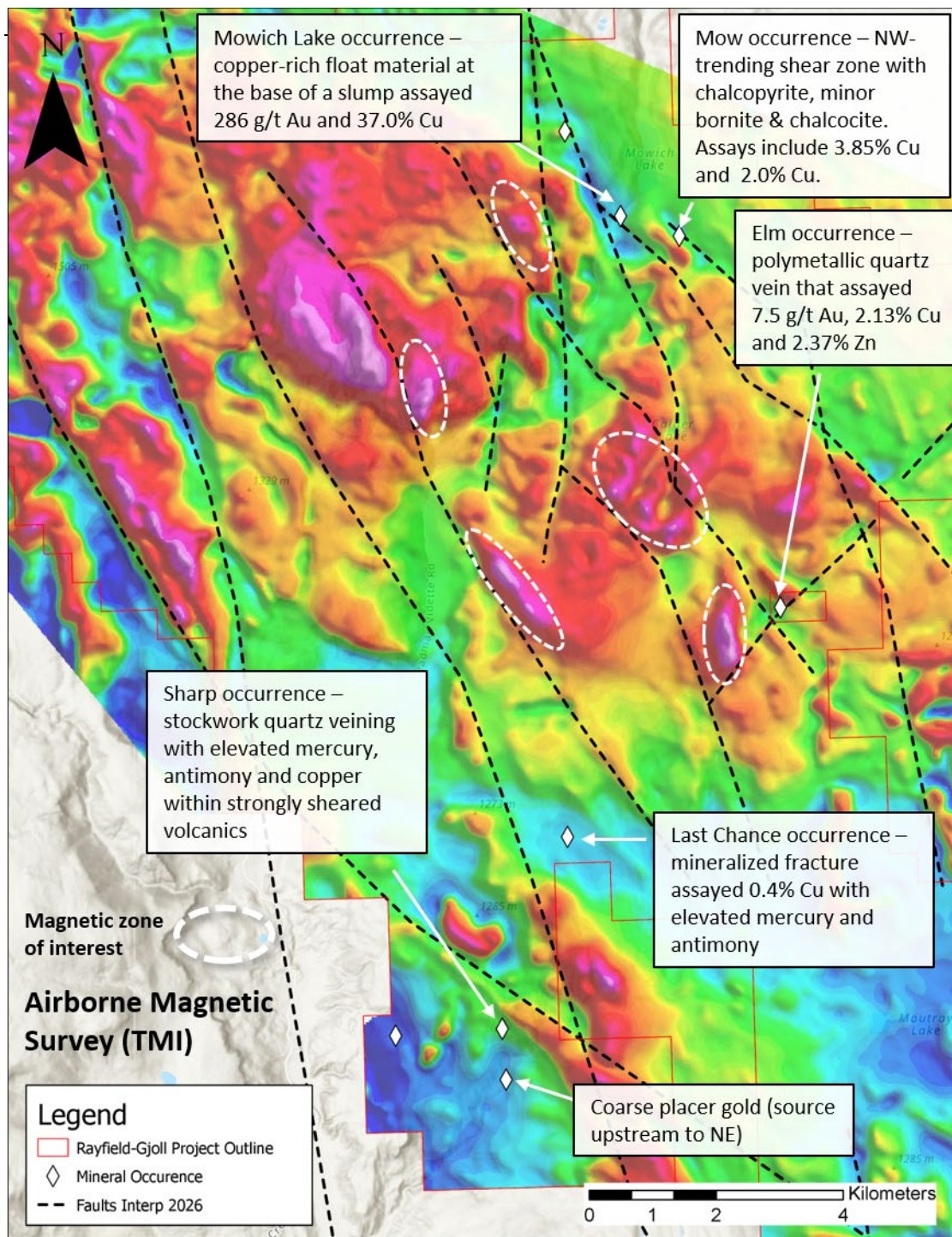


Figure 4: The 2025 airborne magnetic survey has identified multiple magnetic anomalies along northwest-trending fault systems interpreted as extensions of the same structures controlling mineralization at the nearby New Afton deposit. These results identify a highly prospective structural corridor and significantly enhance the exploration potential in the project's southern area.

References

Brauset, R.U. 1998. Assessment Report on Geological and Geochemical Surveys of the South-East Quadrant of Gnome. BC Geological Survey Assessment Report 25996.

Koffyberg, A. 2008. Assessment Report on a Diamond Drill Program, Rayfield River Program. BC Geological Survey Assessment Report 30271.

Morin, J.A. 1988. Geological and Geochemical Report on the Epi Claim Group. BC Geological Survey Assessment Report 17810.

Scott, A.R. 1981. Geophysical Report on Induced Polarization and Magnetics Survey Gala Property. BC Geological Survey Assessment Report 09223.

About Golden Sky Minerals Corp.

Golden Sky Minerals Corp. is a well-funded junior grassroots explorer engaged in the acquisition, assessment, exploration, and development of mineral properties located in highly prospective areas and mining-friendly districts. Golden Sky's mandate is to develop its portfolio of properties to the mineral resource stage through systematic exploration.

Its portfolio includes the Rayfield-Gjoll Copper-Gold Project in British Columbia, the Hotspot and Luckystrike gold projects in Yukon, and the Auden Gold Project in Ontario's Timmins camp. The company was incorporated in 2018 and is headquartered in Vancouver, British Columbia, Canada.

More information can be found at the Company's website at www.goldenskyminerals.com

About Boliden

Boliden contributes to a sustainable future by extracting, producing and recycling metals that are essential to improve society for generations to come. With care for people and the environment, combined with experience gathered over a century and cutting-edge technology, Boliden's 8,000 employees have achieved leading productivity and one of the lowest carbon footprints in the industry.

ON BEHALF OF THE BOARD

John Newell, President and Chief Executive Officer

Carl Schulze, P. Geo., Consulting Geologist with Aurora Geosciences Ltd, is a qualified person as defined by National Instrument 43-101 for Golden Sky's British Columbia exploration projects, and has reviewed and approved the technical information in this release.

For new information from the Company's programs, please visit Golden Sky's website at www.GoldenSkyMinerals.com or contact John Newell by telephone (604) 568-8807 or by email at info@goldenskyminerals.com or john.newell@goldenskyminerals.com.

Neither the TSX Venture Exchange nor its Regulation Services Provider (as that term is defined in the policies of the TSX Venture Exchange) accepts responsibility for the adequacy or accuracy of this release.

Forward-Looking Statements

Statements contained in this news release that are not historical facts are “forward-looking information” or “forward-looking statements” (collectively, “Forward-Looking Information”) within the meaning of applicable Canadian securities legislation. In certain cases, Forward-Looking Information can be identified by the use of words and phrases such as “anticipates”, “expects”, “understanding”, “has agreed to” or variations of such words and phrases or statements that certain actions, events or results “would”, “occur” or “be achieved”. Although Golden Sky has attempted to identify important factors and risks that could affect Golden Sky and may cause actual actions, events or results to differ materially from those described in Forward-Looking Information, there may be other factors and risks that cause actions, events or results not to be as anticipated, estimated or intended, including, without limitation: inherent risks involved in the exploration and development of mineral properties; the uncertainties involved in interpreting drill results and other exploration data; the potential for delays in exploration or development activities; the geology, grade and continuity of mineral deposits; the possibility that future exploration, development or mining results will not be consistent with Golden Sky’s expectations; accidents, equipment breakdowns, title and permitting matters; labour disputes or other unanticipated difficulties with or interruptions in operations; fluctuating metal prices; unanticipated costs and expenses; uncertainties relating to the availability and costs of financing needed in the future, including to fund any exploration programs on its projects; that Golden Sky may not be able to confirm historical exploration results and other risks set forth in Golden Sky’s public filings at www.sedarplus.ca. In making the forward-looking statements in this news release, Golden Sky has applied several material assumptions, including the assumption that general business and economic conditions will not change in a materially adverse manner. There can be no assurance that Forward-Looking Information will prove to be accurate, as actual results and future events could differ materially from those anticipated in such statements. Accordingly, readers should not place undue reliance on Forward-Looking Information. Except as required by law, Golden Sky does not assume any obligation to release publicly any revisions to Forward-Looking Information contained in this news release to reflect events or circumstances after the date hereof or to reflect the occurrence of unanticipated events.